

**Potential hazards of *Laurus nobilis* essential oil on juveniles of a non-target mosquitofish:
chemical characterization, acute toxicity and biomarker responses**

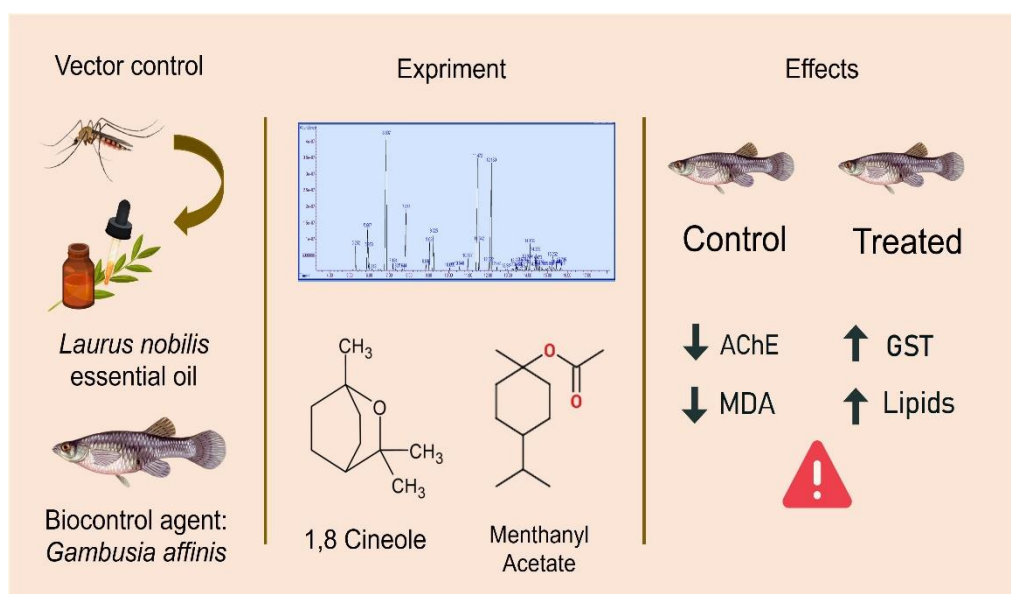
Nesma Abir DAAS¹ (0000-0003-0249-8722), Salima CHOUAHDA^{1*} (0000-0003-4699-1615),
Choukri BAROUR² (0000-0002-0968-2015)

¹ Laboratory of Applied Animal Biology, Department of Biology, Faculty of Sciences, Badji
Mokhtar - Annaba University, 12, P.O.Box, 23000 Annaba, Algeria

² Laboratory of Terrestrial & Aquatic Ecosystems, Faculty of Natural and Life Sciences, University
of Souk-Ahras, Mohamed-Cherif Messaadia, BP1553, Annaba Road, Souk-Ahras, Algeria

*Correspondence: salima.chouahda@univ-annaba.dz ; phone : +213778404261

1 Graphical abstract



2

3

4 **Abstract:** The efficacy of essential oils against mosquito larvae has been highlighted, being used as
5 an alternative to chemical insecticides in a vector control program. However, few works demonstrate
6 the side effects of these substances on non-target organisms like *Gambusia affinis* (Baird and Girard,
7 1853) (Actinopterygii: Poeciliidae) considered as a reference biological control agent. This study
8 focuses on the potential side effects of an essential oil (EO) of *Laurus nobilis* L. (1753) on juveniles
9 of *G. affinis*. The mosquitofish were collected from El Karma (in Annaba province). First, we
10 analyzed the biochemical composition of the essential oil using gas chromatography-spectrometry
11 (GC/MS). Then, acute toxicity tests (48 hours) were carried out, with the application of different
12 concentrations of the EO added to the fish-rearing water of juveniles of *G. affinis*, and determination
13 of the LC50/48h. Also, different morphometric parameters such as Head Weight, Body Weight, Full
14 Weight, Head Length, Body Length and Full Length have been measured after acute exposure to the
15 EO. Lastly, the acetylcholinesterase (AChE) and the glutathione-S-transferase (GST) activities,
16 malondialdehyde (MDA) rate, and total lipid levels were measured in control and treated series.
17 GC/MS analysis demonstrated the different biochemical constituents of the EO, with 1,8-cineole

(21.9%) as the main compound followed by menthanyl acetate (17.15%) and methyl eugenol (17.11%). The determined LC50/48h was 49.48 mg/L. In addition, the morphometric measurements indicated that the treated series was characterized by lower weights compared to the control one. Regarding environmental biomarkers, the current results showed that individuals exposed to the LC50/48h caused a significant decrease in AChE and an increase in GST activities. Moreover, it generated a slight decrease in MDA rates, with an increase in total lipid contents. Regardless, juveniles of this non-target organism are sensitive to the high concentrations tested, compared with those obtained against some mosquito species, hence the need to take the necessary measures when using this EO as an alternative to chemical pesticides.

Keywords: *Gambusia affinis*, Acute toxicity, Botanical insecticides, Biochemical markers, Morphometrics, Essential oil

1
2
3
4
5
6
7
8
9
10
11
12
13
14
15
16
17
18
19
20
21
22
23
24
25

1. Introduction

Conventional insecticides have detrimental effects on the environment and human health (Benelli et al. 2021; Mavrogenis et al. 2023). As a result, there is a growing interest on exploring sustainable and eco-friendly alternatives for controlling vectors and crop pests (Benelli, 2015a, b; Benelli et al. 2015a, b; Jeevitha et al. 2025). Plant-based products, such as botanical extracts and essential oils (EOs), constitute promising substitutes to synthetic pesticides (Karabörklü and Ayvaz, 2023). They include rich sources and various bioactive components, many of which are selective and have little or no adverse effect on non-target animals and the environment (Govindarajan and Benelli, 2016a). The bioactive components of essential oils have antioxidant, antibacterial, and larvicidal properties, with documented effects on fundamental metabolic, biochemical, physiological, and behavioural processes of insects. Numerous plant extracts can function as toxicants, repellents, larvicides, or growth regulators, potentially serving as effective alternatives to conventional synthetic pesticides (Verheggen et al. 2022).

Laurus nobilis L. 1753 (Lauraceae), commonly known as the Noble Laurel, is an aromatic plant species native to the Mediterranean basin (Marzouki et al. 2011). Several studies conducted on laurel oil have revealed its antibacterial, antifungal, antioxidant, insecticidal, acaricidal and repellent properties (Aissaoui et al. 2023 ; Bouzidi et al. 2020 ; Fidan et al. 2019).

Oxidative stress occurs when ROS formation exceeds the capacity of cellular antioxidants to neutralize or remove them (Narra et al. 2017). This can affect macromolecules such as lipids, proteins, and nucleic acids. On the other hand, some biomarkers indicate potential neurotoxicity of xenobiotic molecules, using neurotransmitters such as acetylcholinesterase (AChE). Moreover, glutathione S-transferase enzymes (GSTs), another group of biomarkers, are cytosolic enzymes involved in phase II biotransformation of a vast range of contaminants (Mazari et al. 2023). Lipid peroxidation is a free-radical-mediated series of reactions that, once initiated, cause oxidative degradation of

1 polyunsaturated lipids. Biological membranes' components are the most prevalent targets (Sule et al.
2 2022). For many years, malondialdehyde (MDA) has been employed as a convenient biomarker for
3 lipid peroxidation, as it is one of the ultimate products of polyunsaturated fatty acid peroxidation in
4 the cells (Zhang et al. 2019).

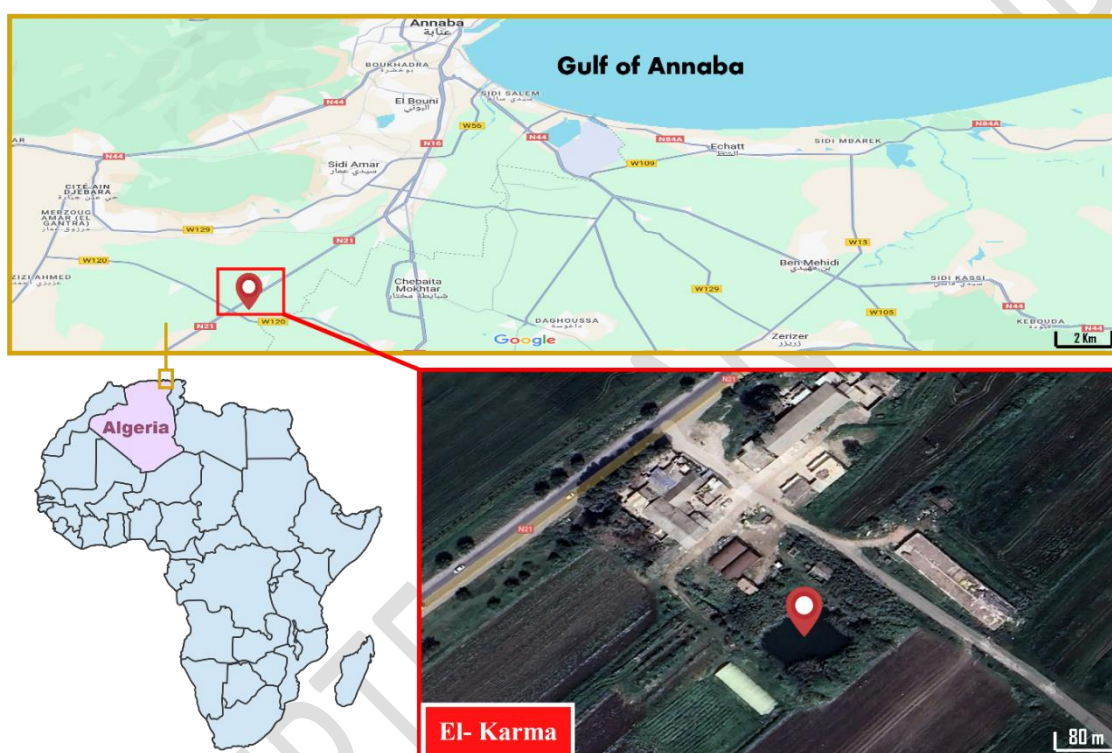
5 Teleost fish are often used as models in ecotoxicological studies, due to their relative abundance
6 across many aquatic ecosystems (Cheghib et al. 2020). Western mosquitofish *Gambusia affinis* (Baird
7 & Girard, 1853 (Cyprinodontiformes, Poeciliidae), have been introduced in several countries and
8 extensively used against mosquito larvae (Bendali et al. 2001; Zaidi and Soltani, 2013). The
9 mosquitofish *G. affinis* has been the subject of extensive research that has addressed a variety of
10 topics (Denna et al. 2022 ; Huang et al. 2016). The data collected serves as an experimental foundation
11 for the investigation of the adverse effects of xenobiotics on this non-target larvivorous fish species.
12 Many studies have investigated the potential hazards of some potent insecticides widely used for
13 vector and pest control against *G. affinis*. Thus, inhibitors of chitin synthesis that are classified as
14 benzoylphenylurea (Zaidi and Soltani, 2013), or actara® a neonicotinoid insecticide (Cheghib et al.
15 2020) have been tested. In addition, recent studies have been conducted in our laboratory on the
16 evaluation of the insecticidal activity of several EOs (essential oils) against mosquito vectors, among
17 which a larvicidal activity of *L. nobilis* EO was found against two abundant mosquito species *Culiseta*
18 *longiareolata* (Bouzidi et al. 2020) and *Culex pipiens* L. (Aissaoui et al. 2023). However, only a few
19 studies have assessed their impacts on non-target organisms.

20 Therefore, the present study aimed to determine the chemical composition of EO from *L. nobilis*
21 collected at a humid area (Northeast Algeria), to assess its toxicity and to evaluate its potential effect
22 on different morphometric parameters as well as selected biochemical markers against a non-target
23 mosquitofish *G. affinis* following an acute exposure. Prior to the implementation of this EO as a
24 botanical insecticide against mosquitoes, knowledge on their potential impacts on this fish,
25 considered as the best agent for biological control programs is needed.

1

2 **2. Materials and methods**3 **2.1. Sampling site**

4 Juveniles of *G. affinis* were collected from a rather clean site, El Karma (El Hadjar) located in
 5 southern Annaba province (Northeast Algeria: 36°44.8080'N, 7°40.2960'E). Its area is around 600
 6 square meters. Furthermore, there is no anthropogenic activities around the selected area (Figure 1).



7

8 **Figure 1.** Localization of the sampling site of *G. affinis* juveniles at El Karma region in Annaba
 9 province (Algeria) (Google Earth Pro).

10 **2.2. Plant material, essential oil extraction and yield calculation**

11 *Laurus nobilis* leaves were gathered in the region of Seraïdi (36°55'N, 7°40'E) which is located in the
 12 north of the of Annaba province. The sampled leaves were authenticated at the herbarium that
 13 contains voucher specimens found in the Botany Department at the University of Badji-Mokhtar
 14 (Annaba, Algeria). The extraction of the essential oil was performed using a Clevenger-type
 15 hydrodistillation equipment for 3h. For each hydrodistillation, 200 g of the leaves were dipped in

1 1500 ml of distilled water. Once the essential oil and the aqueous phase separated, and in order to
2 clear out any remaining water, the essential oil was dried over using anhydrous sodium sulfate. The
3 latter was then stored in the darkness under refrigeration in order to be used for further analyses.
4 According to the plant's dry matter content, the yield of the EO was calculated.

5 **2.3. Gas chromatography – mass spectrometry analysis of the essential oil**

6 The EO extracted from *L. nobilis* leaves was analyzed using gas chromatography-mass spectrometry
7 (GC-MS) to separate and figure out its constituents. The GC-MS was equipped with an HP-5MS
8 column (5% phenyl-methylpolysiloxane; 30 m × 250 µm LD × 0.25 µm), added to an Agilent
9 injection system (Agilent 19091S-433: 2169.66548). Helium (He) was used as a gas carrier with a
10 flow rate of 0.9 ml/min, while the split ratio was set to 5:1. A volume of 0.2 µl of the oil sample was
11 injected. The chromatogram was acquired by initially maintaining the oven temperature at 50°C for
12 1 minute, followed by a gradual increase to 300°C over 10 minutes at a rate of 10°C/min.

13 **2.4. Fish collection and acute toxicity**

14 The fish juveniles were captured and placed into proper buckets. They were then taken to the
15 laboratory of Applied Animal Biology (Faculty of Science, University of Badji-Mokhtar Annaba,
16 Algeria), to conduct the assays. Aquariums with a capacity of 80 liters were regularly aerated.
17 Laboratory conditions like temperature, photoperiod and pH were constant. Individuals were kept for
18 10 to 15 days for acclimation, after which the acute toxicity tests were undergone. A control series
19 consisting of untreated fish was used. After the EO was extracted, it was used to carry out preliminary
20 acute toxicity tests at different concentrations (35; 45; 55; 65; 75 mg/L), and the lethal concentrations
21 were determined following an exposure time of 48h. Three repetitions of every concentration were
22 applied, with 10 individuals in each. Mortality was examined every day for 2 days (48h), with the
23 cumulative mortality being calculated. The observed mortality rate was adjusted (Abbott, 1925).
24 Subsequently, the data underwent analysis of variance following the angular transformation of the

observed mortality percentages. The different lethal concentrations as well as their confidence limits (95%) were determined. The Hill slope of the concentration-mortality curves was calculated.

2.5. Biochemical procedures

During the exposure, 15 treated and control individuals of *G. affinis* were used to quantify different biomarkers, in which we measured several morphometric parameters: Head Weight (Head. W), Body Weight (Body. W), Full Weight (Full. W), Head Length (Head L.), Body Length (Body L.) and Full Length (Full L.). These parameters and their correlations were assessed through the use of the Spearman's correlation coefficient and principal component analysis (PCA).

The enzymatic activity of AChE was measured using the technique described by Ellman et al. (1961), by using *G. affinis* juveniles' heads. In this context, once acetylcholinesterase, which is found in the brain's supernatant, combines with acetylthiocholine (Asch), there is a release of acetic acid and thiocholine (Sch). The specific activity of the biomarkers is expressed relative to the proteins, whose assay is performed using Bradford (1976) method, with absorbances measured at 595 nm wavelength. Following the technique provided by Habig et al. (1974), the activity of the GST was measured using the whole bodies of *G. affinis* juveniles. In order to homogenize the tissues, 1 ml of phosphate buffer (0.1 M; pH 6) was used. To quantify the protein levels, Bradford's (1976) method was followed with bovine albumin as a standard. The absorbances were read at 340 nm wavelength.

Quantifying malondialdehyde rates was used to indicate a potential lipid peroxidation. The latter was measured following the technique provided by Draper & Hadley (1990), using entire bodies of *G. affinis* juveniles. The reaction between malondialdehyde and a component, thiobarbituric acid (TBA), was highlighted according to the amount of color generated. The absorbances were measured at a wavelength of 532 nm.

The lipid levels were determined following the vanillin-based technique described by the Goldsworthy et al (1972) method. Lipids from entire bodies of *G. affinis* juveniles were extracted according to the method provided by Shibko et al (1966). After each sample was homogenized in 1

1 ml of TCA (20%), they underwent centrifugation (5000 g for 10 min). The pellet was retrieved and
2 then placed into a solution of ether and chloroform (v/v) before being centrifuged again (5000 g for
3 10 min). The obtained supernatant was used to quantify lipids, with absorbances being read at a
4 wavelength of 532 nm.

5 **2.6. Statistical Analysis**

6 In this work, all statistical analyses were conducted using R, version 4.4.1 (R Core Team, 2024; Ihaka
7 and Gentleman, 1996), and RStudio (Posit Team, 2024) for Windows, except toxicity tests were
8 performed using GraphPad Prism version 9 (GraphPad software, La Jolla, CA, USA). The Shapiro-
9 Wilk test was employed to assess the normality of the variables. Data were presented as mean \pm
10 standard error (SE). The comparisons for each variable between groups were conducted using the
11 nonparametric Kruskal-Wallis and Mann-Whitney rank sum tests. The Kruskal-Wallis test was
12 succeeded by the nonparametric pairwise Dunn's test (with Bonferroni-adjusted p-values) to identify
13 post-hoc statistical differences at a significance threshold of $\alpha = 0.05$. Correlations among the
14 investigated variables were computed using Spearman's nonparametric correlation coefficient. To
15 characterize both control and treated groups based on their morphometric parameters, assessing the
16 potential effects of essential oil on the growth of *G. affinis* juveniles, we conducted a multivariate
17 analysis utilizing principal component analysis (PCA) as the ordination technique. Our statistical
18 analyses and data visualisation employed several R packages, including 'FactoMineR' (Lê et al.
19 2008), 'ggplot2' (Wickham 2016), 'dunn.test' (Dinno 2024), 'factoextra' (Kassambara and Mundt
20 2020), 'Hmisc' (Harrell 2025), 'ggcorrplot' (Kassambara 2023a), 'ggpubr' (Kassambara 2023b),
21 'psych' (Revelle 2023), and 'PMCMRplus' (Pohlert 2024).

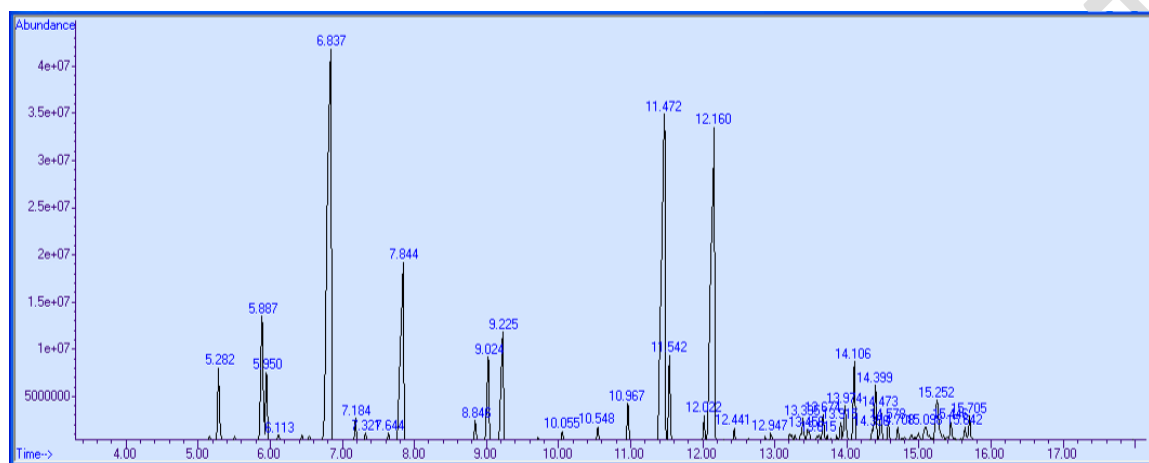
22 **3. Results**

23 **3.1. Yield and GC/MS analysis of *L. nobilis* EO**

24 The hydrodistillation of *L. nobilis* EO had a yield percentage of $0.52 \pm 0.04\%$. After hydrodistillation,
25 the EO was analyzed by GC/MS. The different constituents of the EO were identified according to

1 their retention times (RT) using the MS library (Figure 2). The analysis identified 38 chemical
 2 compounds, constituting a total of 100.001% of the whole EO composition. The main constituents
 3 that were identified were namely: 1,8-cineole (21.900%), menthanyl acetate (27.150%), methyl
 4 eugenol (17.112%), linalool (8.410%) and sabinene (3.936%) (Table 1).

5



6

7 **Figure 2.** Gas-chromatogram identifying the different components of *L. nobilis* EO according to their
 8 retention times and their abundance.

9 **Table 1.** Chromatography-spectrometry (GC/MS) analysis of the chemical composition of *L. nobilis*
 10 essential oil.

N°	Retention time (Min)	Chemical compound	Concentration (%)
1	5.282	α -Pinene	2.208
2	5.887	Sabinene	3.936
3	5.950	β -Pinene	1.836
4	6.113	β -Myrcene	0.287
5	6.837	1,8 Cineole	21.900
6	7.184	γ -Terpinene	0.615
7	7.321	Trans Sabinene hydrate	0.282

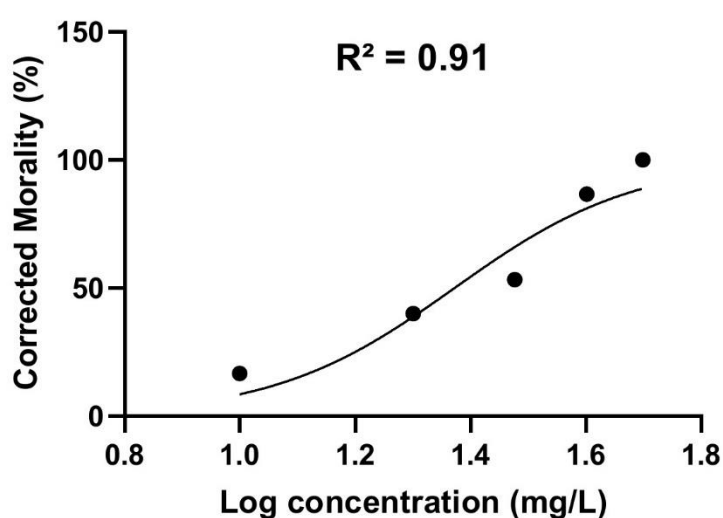
8	7.644	α -Terpinolene	0.280
9	7.844	Linalool	8.410
10	8.846	Endo-Borneol	0.607
11	9.024	4- Terpineol	2.412
12	9.225	α -Terpineol	3.505
13	10.055	Lynalyl Acetate	0.255
14	10.548	Bornyl Acetate	0.370
15	10.967	Delta Terpinyl Acetate	0.927
16	11.472	Menthanyl Acetate	17.150
17	11.542	Eugenol	2.195
18	12.022	β - Elemene	0.610
19	12.160	Methyleugenol	17.112
20	12.441	Caryophyllene	0.362
21	12.947	Cyclodecene	0.314
22	13.395	Bicyclogermacrene	0.689
23	13.456	Phenol, 2,6-di-tert-butylphenol	0.514
24	13.615	Cubedol	0.310
25	13.674	Delta- Cadinene	0.722
26	13.915	α -Copaen-11-ol	0.474
27	13.974	Elemicin	1.156
28	14.106	Nerolidol	1.955
29	14.356	Germacrene D	0.340
30	14.399	(+) Spathulenol	1.477
31	14.473	Caryophyllene oxide	0.911

32	14.578	Veridiflorol	0.620
33	14.708	Ledol	0.403
34	15.098	T-Muurolol	0.721
35	15.252	α - Cadinol	2.140
36	15.446	Naphtalene	0.754
37	15.642	1(10),4-Cadinadien-8. α .-ol	0.446
38	15.705	Shyobunol	0.796
Total			100.001

1

2 3.2. Acute toxicity

3 Acute toxicity assays were conducted and different concentrations of *L. nobilis* EO were applied (35;
4 45; 55; 65; 75 mg/L) in 3 tanks, containing 10 juveniles each. The EO exposure for 24h to the
5 aforementioned concentrations, revealed an $LC_{50} = 55.93$ mg/L. The exposure for 48h induced fish
6 mortality, which exhibited a dose-response relationship (Figure 3). A significant effect of the
7 concentration was determined by the statistical analysis. Different toxicological parameters such as
8 lethal concentrations, their 95% confidence limits, and their slopes were determined (Table 2).



9

1 **Figure 3.** Toxicity of *L. nobilis* EO on juveniles of *G. affinis* at different concentrations (mg/L):
2 sigmoidal dose-dependent response curve of corrected mortality (%) as a function of the decimal
3 logarithm of concentrations.

Exposure time (hours)	Slope	LC ₅₀	LC ₅₀	CI	R ²
1	3.791	71.72	65.08 – 88.17	0.91	
24	5.466	55.93	49.25 – 62.42		
48	5.581	49.48	41.93 – 56.46		

7 **Table 2.** Toxicological parameters of *L. nobilis* EO against juveniles of *G. affinis* after different
8 exposure times: lethal concentration (LC, mg/L), 95% confidence interval (CI.), Hill slope, and
9 coefficient of determination (R²).

10 **3.3. Morphometric parameters**

11 In this study, we measured the following morphometric parameters: Head Weight (Head. W), Body
12 Weight (Body. W), Full Weight (Full. W), Head Length (Head L.), Body Length (Body L.) and Full
13 Length (Full L.) for each individual in both control and treated groups, as a way of determining the
14 possible effects of the exposure of *L. nobilis* EO on *G. affinis* juveniles. The morphometric parameters
15 were measured using graph paper and a precision balance (precision of 0.1 mg).

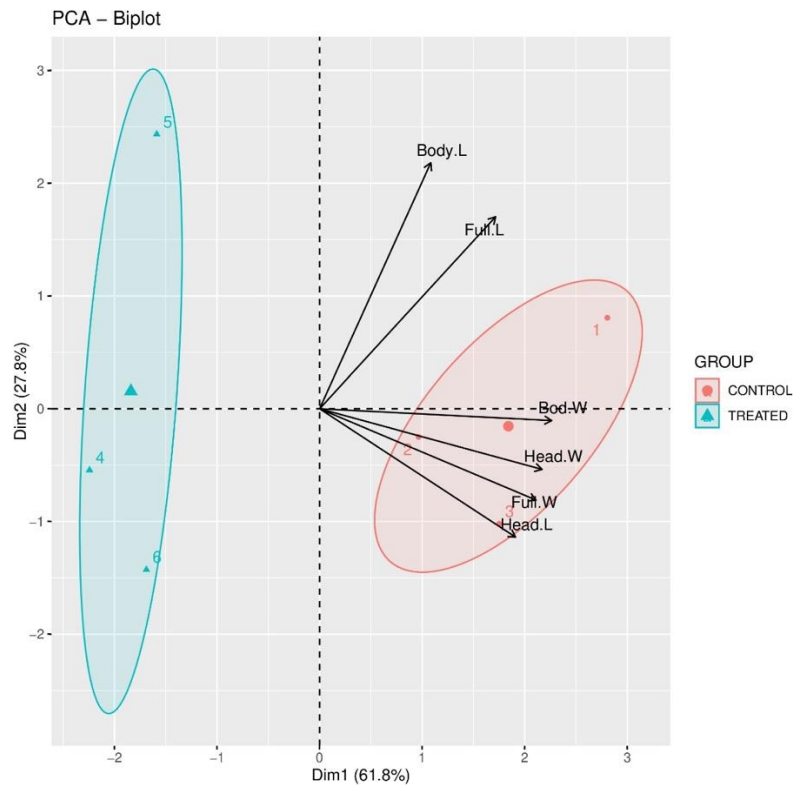


Figure 4. Principal component analysis (PCA) biplot of acute toxicity (control and treated series) and explanatory morphometric variables ($n = 15$). The biplot shows the PCA scores of the explanatory variables as vectors (in colors) and the toxicity experimental apparatus as points. Points aligned with a specified variable should be regarded as exerting a significant influence on it. The magnitude of the vectors indicates the intensity of their contribution to each axis. Colored concentration ellipses (0.95 probability level) illustrate observations pertaining to toxicity types categorized by mark class (Dim 1: 61.8% and Dim 2: 27.8%).

We used the Principal Component Analysis (PCA) because it is a real versatile statistical method. In our study we applied it as an exploratory and ordination technique and it allowed us to reduce the dimensionality of our morphometric dataset (based on 6 weight and linear variables) and to preserve the most important patterns of relationships between the analyzed variables measured on the mosquitofish individuals of *G. affinis* (Full.L, Head.L, Body.L, Full.W, Head.W and Body.W) according to the control and treated groups. The PCA outcomes provided an approximation of our original data on the morphological variation within and between treated and control groups. In a

1 synthetic way, the PCA outcomes indicate that the first two axes explain 89.6% of the total inertia
2 (data variance) present in our dataset, indicating that the biplot represents the almost of the
3 morphometric variability (Figure 4). On the one hand, the 1st axis (Dim 1) alone, explains 61.8% of
4 the total variation and show strongly positive correlation especially with: Body.W ($r = +0.93$; $\cos^2 =$
5 0.86), Head.W ($r = +0.89$; $\cos^2 = 0.79$), Full.W ($r = +0.87$; $\cos^2 = 0.75$) and Head.L ($r = +0.78$; \cos^2
6 $= 0.61$). On the other hand, the 2nd axis (Dim 2) precisely explains 27.8% of the total variation and it
7 was also positively correlated with the two remaining linear variables: Body.L ($r = +0.89$; $\cos^2 =$
8 0.80) and Full.L ($r = +0.70$; $\cos^2 = 0.49$). Moreover, PCA show different patterns of correlations
9 between the analyzed variables and the biplot revealed an important weight differentiation between
10 the control group of *G. affinis* and the treated one; which was treated by an essential oil extracted
11 from *Laurus nobilis* L. (Family Lauraceae). In conclusion, the 1st axis clearly distinguishes the control
12 group from the treated one and reveals that the treated individuals are mainly characterized by weak
13 weights. This result could be explained by the impact of our selected EO on the mosquitofish growth
14 process.

15 In addition, a nonparametric correlation analysis was carried out to appraise potential relationships
16 among the previously mentioned morphometric parameters measured on *Gambusia affinis*
17 individuals following acute exposure to *Laurus nobilis* EO. In general, the two correlograms indicate
18 that the calculated Spearman's correlation coefficients, between the morphometric parameters, are
19 higher in the treated group compared to those calculated in the control group (Figure 5). As instance,
20 in the treated series, Body W. was strongly correlated with Full W. ($r = +0.95$) whereas in the control
21 group this correlation is slightly less ($r = +0.83$). This result could explain the growth imbalance (lack
22 of proportion) between the control and treated individuals.

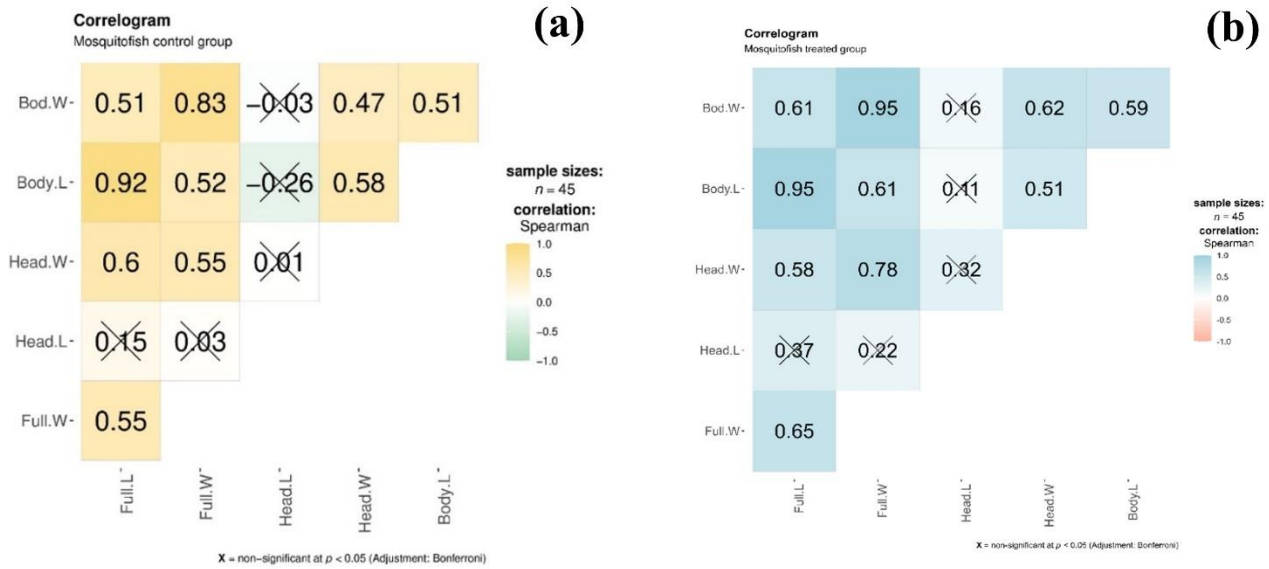
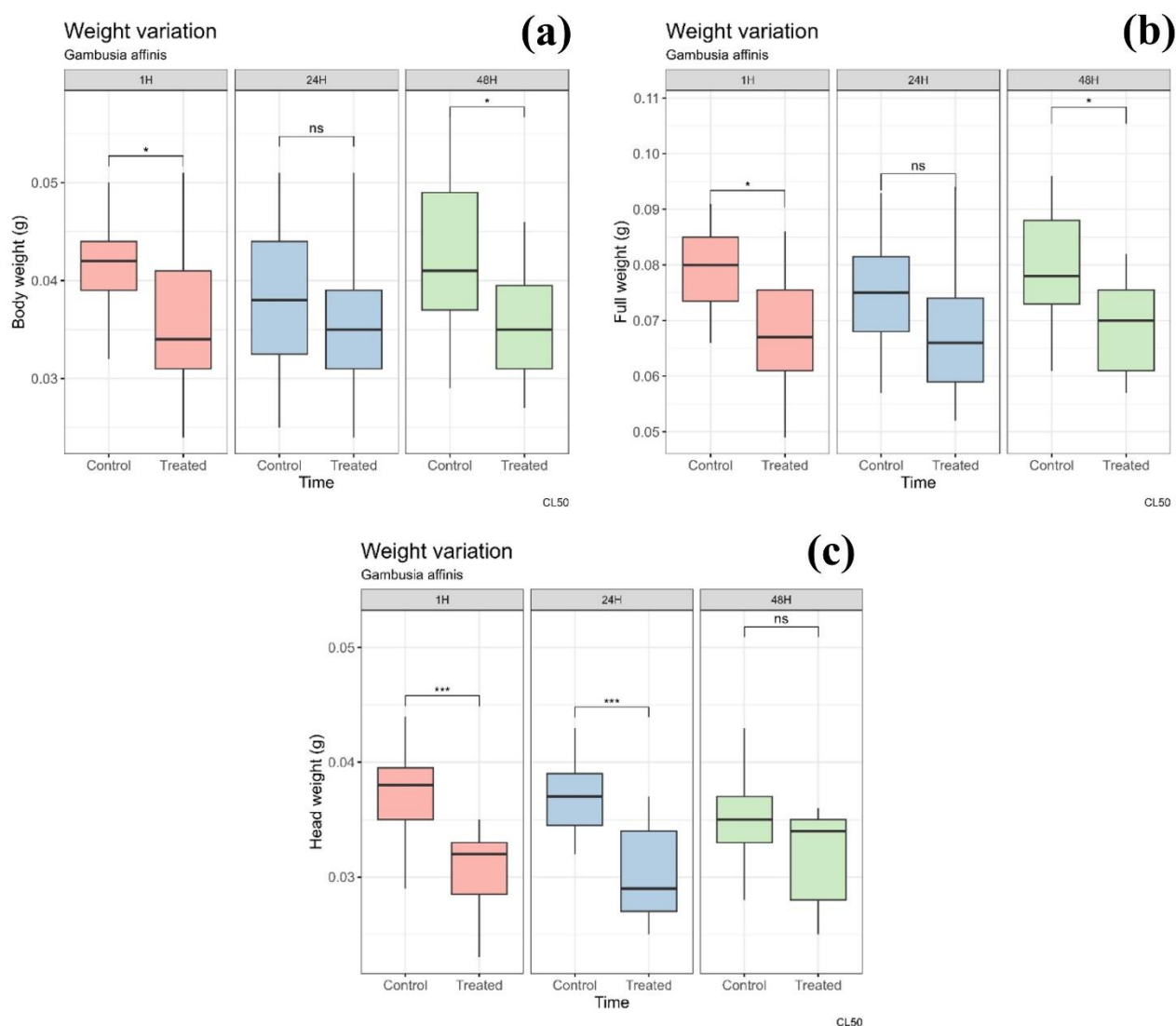


Figure 5. Spearman's correlation carried out on the morphometric parameters (weight and length) in control (a) and treated (b) juveniles of *G. affinis* after acute exposure to *L. nobilis* essential oil.

3.4. Weight variation

According to the PCA results; it was illustrated that the control individuals were characterized by higher weights compared to the treated ones. Regarding the Body W., a significant difference was found between the control and treated groups after 1H and 48H ($p < 0.05$). By contrast, no significant difference was reported after 24H of exposure ($p > 0.05$, Figure 6a). The Full W. parameter showed the same variation throughout the experiment (Figure 6b). Meanwhile, the Head W. parameter showed highly significant differences between the control and the treated series after 1H and 24H of exposure ($p < 0.05$), although it showed no significant difference after 48H of exposure (Figure 6c). Moreover, Kruskal-Wallis test showed no significant differences between different treatment times (1H, 24H and 48H) in both control and treated series (for each variable).



1 were observed after 1H. Mann-Whitney test revealed significant differences ($p < 0.05$, Figure 7a)
2 between treated and control individuals for each exposure time.

3 With regard to the GST activity; after 1H as exposure time, it was reported that the GST activity
4 difference in *G. affinis* juveniles was significant between control and treated groups ($p < 0.05$). Then,
5 the GST activity gradually decreased over time, reaching its lowest level after 48H of exposure,
6 indicating no significant differences between them ($p > 0.05$, Figure 7b).

7 Overall, a time-dependent gradual decrease in MDA levels was found in the treated series compared
8 to the control one, starting from 1H of exposure, up until the end of the experiment. A significant
9 difference was observed between treated and control individuals during the entire exposure period (p
10 < 0.05 , Figure 7c).

11 Furthermore, the total lipid content measured in *G. affinis* whole body remains significantly constant
12 in control individuals. In contrast, a slight significant increase was recorded in treated groups with
13 significant differences between control and treated values at all exposure times, with the higher
14 content value at 48H ($p < 0.05$, Figure 7d).

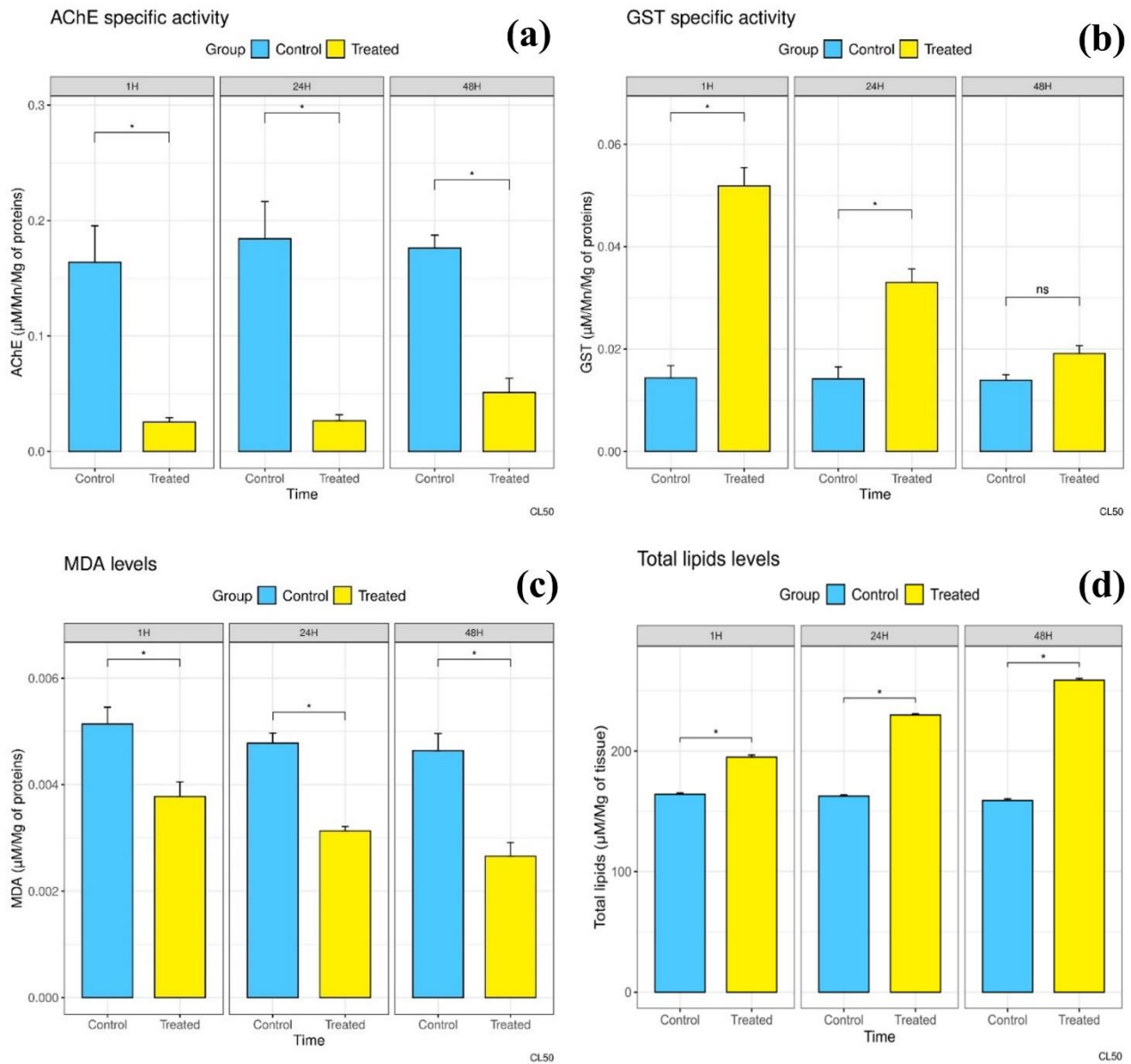
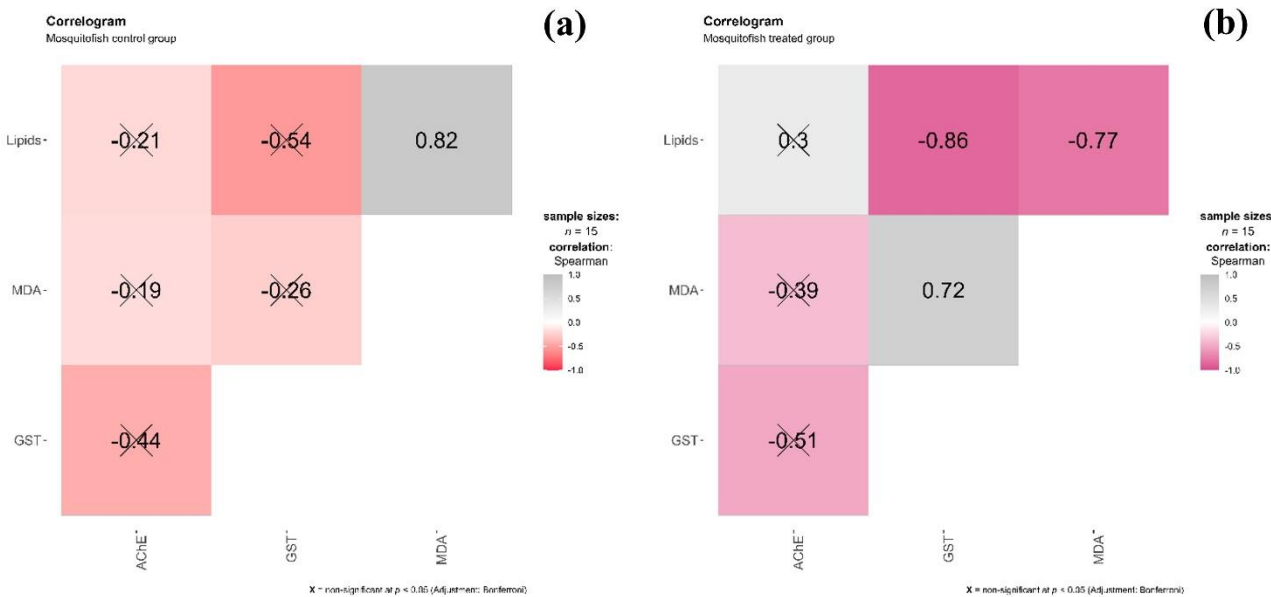


Figure 7. Bar plots showing the effect of *L. nobilis* essential oil on the specific activity of acetylcholinesterase (AChE) ($\mu\text{M}/\text{Mn}/\text{mg}$ of proteins) (a), GST ($\mu\text{M}/\text{Mn}/\text{mg}$ of proteins) (b), MDA ($\mu\text{M}/\text{mg}$ of proteins) (c) and total lipids ($\mu\text{M}/\text{mg}$ of tissue) (d) on *G. affinis* juveniles following different exposure times ($m \pm se$, $n = 5$) for the same exposure time; asterisks above show the significant difference level between control and treated series reported by Mann-Whitney rank sum test at $p < 0.05$).

Another Spearman's correlation analysis was performed between the different biochemical biomarkers measured in control and treated individuals. In the control series, a strongly positive

1 correlation was indicated between MDA levels and total lipid contents ($r = +0.82$). Simultaneously,
 2 there was a non-significant negative correlation between GST and AChE levels ($r = -0.44$) (Figure
 3 8a).
 4 On the other hand, in the treated series, the correlation analysis showed a strongly negative
 5 correlation, firstly, between MDA levels and total lipid contents ($r = -0.77$), and secondly, between
 6 total lipids and GST rates ($r = -0.86$). Besides this result, a positive correlation was calculated between
 7 MDA and GST rates ($r = +0.72$) (Figure 8b).



8
 9 **Figure 8.** Correlograms showing the Spearman's correlation analysis carried out on biochemical
 10 biomarkers (AChE, GST, MDA and lipids) in control (a) and treated (b) juveniles of *G. affinis*
 11 exposed to *L. nobilis* EO.

12 4. Discussion

13 The hydrodistillation extraction of the essential oil from dry leaves of *L. nobilis* harvested in Seraïdi
 14 (Algeria) had an average yield of 0.52% (w/w). The estimated yield of the same plant species varies
 15 depending on the area from which the plant is collected. Bouzidi et al. (2020) reported a yield of
 16 0.96% for the same plant species collected at Tébessa a semi-arid region (East Algeria). Aissaoui et
 17 al. (2023) also observed a yield of 0.79% (w/w) in the leaves of *L. nobilis* collected from Setif located

1 in a semi-arid area (Algeria). Meanwhile, Haddadi et al. (2022) reported an average yield of 0.2% in
2 Chlef (Center Algeria) and Tlemcen (Northwest Algeria). In fact, several factors including climate
3 conditions, harvesting season, plant parts, soil quality, period of the extraction and even the extraction
4 method itself can influence not only the yield but also the chemical constitution of *L. nobilis* EO
5 (Bekhti et al. 2020). The current research identified 38 chemical constituents in *L. nobilis* EO
6 collected in a humid area (Northeast Algeria). The main constituents identified were namely: 1,8-
7 Cineole (21.900%), Menthanyl Acetate (27.150%), Methyl Eugenol (17.112%), Linalool (8.410%)
8 and Sabinene (3.936%). Aissaoui et al. (2023) reported a similar result concerning *L. nobilis* growing
9 at Setif (Center Algeria) located in a semi-arid area, with a total of 39 constituents. However, the
10 main components identified were 1,8-Cineole (22.41%), Isolongifolene (10.22%), 3-carene (7.74%),
11 alpha-zingiberene (6.64%) among others. Bekhti et al. (2020) identified 27 constituents in *L. nobilis*
12 leaves collected from the west northern Algeria region. Similar to our results, the major components
13 were mainly 1,8-cineole (30.1%), a-terpynil acetate (21.6%), methyl eugenol (16.9%) and others. A
14 study conducted by Fidan et al. (2019) on *L. nobilis* EO in Bulgaria pointed out the main constituents
15 being 1,8-cineole (21.2%), linalool (12.2%) and methyl eugenol (4.6%). Studies carried out on *L.*
16 *nobilis* EO in some areas of Algeria revealed 1,8-cineole as the most dominant component with
17 22.41% in Setif (Center Algeria) area, and 31.61% in Constantine (Northeastern Algeria) (Chibani et
18 al. 2024).

19 **4.1. Acute toxicity of *L. nobilis* essential oil on juveniles of *G. affinis***

20 *Laurus nobilis* EO was reported to exhibit an insecticidal activity following a 24H exposure according
21 to standard procedures recommended by the WHO (1996) in abundant mosquito species like *Culex*
22 *pipiens* (Aissaoui et al. 2023; Menakh et al. 2024). Based on the LC observed against fourth instar
23 larvae, Aissaoui et al. 2023 reported that *L. nobilis* EO showed insecticidal activity on *Culex pipiens*
24 with an LC_{50-24H}= 7.1 mg/L, while Menakh et al. 2024 found an LC_{50-24H}= 31.94 mg/L.

1 Regarding our results, juveniles of *G. affinis* seem to be less sensitive than fourth instar larvae of
2 *Culex pipiens*, exhibiting a LC50-24H of 55.93 mg/L.

3 The acute toxicity of *L. nobilis* EO on the mosquitofish *G. affinis* juveniles revealed the following
4 LC50 at different exposure times: LC50-24H= 55.93 mg/L and LC50-48h of 49.48 mg/L. Several
5 other studies investigated the acute impacts of EO towards non-target organisms. Studies on the acute
6 toxicity of *Thymus mastichina* and *Helichrysum italicum* EO on some freshwater species like
7 *Daphnia magna* and *Thamnocephalus platyurus* (Arthropoda, Anostraca) and saltwater species like
8 *Artemia* sp., were carried out, revealing their respective LC50. *D. magna* exposed to *T. mastichina*
9 showed an LC50-24H of 153.0 mg/L, and a LC50-24H of 55.80 mg/L, after being exposed to
10 *Helichrysum italicum* (Afonso et al. 2024). Govindarajan et al. (2016a) investigated the 48h toxicity
11 of *Pinus kesiya* EO on three non-target organisms: *Anisops bouvieri* (Arthropoda: Notonectidae),
12 *Diplonichus indicus* (Arthropoda: Notonectidae) and *G. affinis*, reporting LC50 values of 4135, 4545
13 and 8390 mg/mL, respectively. On the other hand, *Syzygium zeylanicum* EO toxicity was tested
14 against *G. affinis*, revealing a LC50 value of 20,374 mg/L (Govindarajan and Benelli, 2016b).
15 Govindarajan & Benelli (2016a) evaluated the toxicity of *Artemisia absinthium* EO on non-target
16 organisms like *Chironomous circumdatus*, *Anisops bouvieri* and *G. affinis*, indicating LC50 values
17 of 1040, 3132.70 and 4385 µg/ml, respectively. De Oliveira et al (2022) reported low toxicity of the
18 EO of *Tetradenia riparia* against *G. affinis* with LC₅₀ reaching 924.89 ppm. A study was conducted
19 on the toxicity of *Kaempferia galanga* EO on some non-target organisms, revealing LC₅₀ values
20 varying between 2173.48 mg/L on *A. bouvieri* and 4773.04 mg/L on *G. affinis* (AlSalhi et al. 2020).

21 **4.2. Effects of *L. nobilis* essential oil on morphometric parameters**

22 The current study indicated that this EO had an impact on the morphometrics of *G. affinis*' juveniles,
23 mainly the weight parameters (Body W.; Head W. and Full W.). Different results were reported by
24 Roldan-Juarez et al. (2023), claiming that fish supplemented with a mixture of EOs exhibited a 16.9%

increase in final body weight and a 10.43% increase in length in comparison to the control category. Another study showed that using *Cinnamom cassia* EO in silver catfish *Rhamdia quelen* diets demonstrated significant growth improvements, exhibiting significantly higher weight gain and length in the treated group (Bandeira-junior et al. 2022). Although EO and plant extracts are being used for their safety, very few studies reported their potential negative effects on non-target organisms. An investigation into the effects of garlic EO on *Heros severus* freshwater fish revealed that higher dietary levels of garlic EO led to a reduction in growth performance parameters, including final weight and length (Campelo et al. 2020). The negatively impacted weight parameters obtained in our results could be explained by the high concentration of the EO.

4.3. Effects of *L. nobilis* essential oil on biomarker responses

When organisms are exposed to pollutants, biochemical biomarkers are frequently evaluated, which initiates a series of biological responses that are induced by stress (Keles et al. 2023). The results obtained in this study revealed that *L. nobilis* EO caused the inhibition of AChE activity in the treated series of *G. affinis* juveniles, compared to the control one. This could be explained by the presence of monoterpenes in this EO. In fact, 1.8-cineole-rich EOs seemingly reduce AChE activity (Capatina et al. 2020). This agrees with the study conducted by Bullangpoti et al. (2018) which also indicated a strong inhibition of AChE activity due to 1.8-cineole exposure. An inhibition in AChE activity in zebrafish *D. rerio* after exposure to EO of *Thymus vulgaris* (Capatina et al. 2020) and *Citrus reticulata* (Brinza et al. 2024) was also noticed. The EO of *Ocimum gratissimum* on the pink shrimp *Farfantepenaeus paulensis* caused similar effects (Becker et al. 2021).

Glutathione S-transferases (GSTs) are one of the most abundant and ubiquitous enzyme families as they're engaged in various physiological activities (Tang et al. 2020). They perform an essential role in eliminating toxic compounds like heavy metals, pesticides or other pollutants (Mazari et al. 2023). Our study revealed that *L. nobilis* EO enhanced the activity of GST in treated juveniles, compared to control series starting the beginning of exposure. Our findings are in accordance with those of

1 Brandão et al. (2022), observed with *Mentha piperita* EO on the fish *Colossoma macropomum*, and
2 Saccol et al. (2016) in *C. macropomum* exposed to *Myrcia sylvatica* and *Curcuma longa* EOs. Studies
3 carried out on silver catfish *Rhamdia quelen*, and the gilthead sea bream *Sparus aurata* also reported
4 an induction in GST activity following an exposure to *Lippia alba* EO (Salbego et al. 2014; Toni et
5 al. 2015). An experiment conducted on silver catfish *R. quelen* also indicated similar results after an
6 exposure to *Melaleuca alternifolia* EO (Souza et al. 2018b).

7 Lipid peroxidation (LPO) is a complex chemical chain reaction that occurs due to the damaging effect
8 of free radicals on polyunsaturated fatty acids within cellular membranes. It has been recognized as
9 an essential biomarker of cell damage and dysfunction (Cordiano et al. 2023). Malondialdehyde
10 (MDA), a by-product of LPO, is toxic and can therefore damage DNA and proteins. MDA levels are
11 often used to reflect not only oxidative stress and LPO, but also the ability to remove free radicals.
12 Our results showed that the exposure to *L. nobilis* EO led to a decrease in MDA levels and an increase
13 in lipid levels in the treated series compared to the control one. Saccol et al. (2016) reported similar
14 results, in *C. macropomum* after an exposure to *M. sylvatica* and *C. longa* EOs. Similarly,
15 *Cymbopogon citratus* and *Pelargonium graveolens* EOs decreased MDA rates within the Nile tilapia
16 (Al-Sagheer et al. 2018). On the other hand, Sönmez et al. (2015) observed comparable effects after
17 exposing the rainbow trout *Oncorhynchus mykiss* to *Salvia officinalis*, *Mentha spicata* and *Thymus*
18 *vulgaris* EOs. Moreover, exposing individuals of the silver catfish *R. quelen* to *Aloysia triphylla* EO,
19 presented a lower LPO (Zeppenfeld et al. 2014). In fact, studies on fish exposed to EOs or alternative
20 lipid sources, show changes related to lipogenesis and lipid storage. These changes often lead to
21 increased triglycerides and adipose tissue hypertrophy, which are signs of lipid accumulation (Xu et
22 al. 2022). The inverse relationship between malondialdehyde (MDA) levels and total lipid
23 accumulation may result from reduced lipid peroxidation due to increased fat storage and enhanced
24 antioxidant defenses. Higher lipid levels, particularly in adipose tissue, limit the exposure of
25 polyunsaturated fatty acids to oxidative stress, while antioxidants like vitamin E and glutathione

further mitigate peroxidation (de Paz et al. 2024). Similar studies in Nile Tilapia fish (*Oreochromis niloticus*) treated with *Laurus nobilis* EO found that antioxidant enzyme activities, including superoxide dismutase (SOD) and catalase (CAT), increased with essential oil supplementation, while malondialdehyde (MDA) levels decreased, indicating reduced oxidative stress (Shehata et al. 2025).

5. Conclusions

The *L. nobilis* EO tested against juveniles of the mosquitofish *Gambusia affinis* showed an impact on morphometrics, indicating weaker weights in the treated individuals. Also, there was an inhibition in AChE activity explained by the neurotoxicity of the EO and an induction in GST activity, manifesting oxidative stress. Meanwhile, it improved lipid peroxidation by reducing MDA levels and increasing total lipid contents. The results show that this EO has a slight impact on the growth process and biochemical biomarkers of *G. affinis* juveniles which were sensitive to the high concentrations of the EO. The analyzed parameters could be suitable indicators for predicting the EO potential toxicity in aquatic ecosystems, which should be used carefully if applied as a biopesticide. For environmental risk assessment, further investigations are needed to assess the effect of this EO on reproductive events.

Acknowledgments

This research was funded by the Algerian Fund for Scientific Research (Laboratory of Applied Animal Biology) and the Ministry of Higher Education and Scientific Research of Algeria (PRISE project: 103/ATRBSA/DEPR/2021 to Professor N. Soltani).

References

- Abbott W.S. (1925). A method of computing the effectiveness of an insecticide. *Journal of Economic Entomology*, **18**(2), 265–267.
- Afonso S., Nogueira J., Cavaleiro C., Ferreira F.M. and Moreira-Santos M. (2024). Lethal Toxicity of *Thymus mastichina* and *Helichrysum italicum* Essential Oils to Non-Target Aquatic Organisms: Tools to Screen Environmental Effects?. *Water*, **16**(1), 137, <https://doi.org/10.3390/w16010137>

1 Aissaoui L., Bouaziz A., Boudjelida H. and Nazli A. (2023). Phytochemical screening and biological
2 effects of *Laurus nobilis* (lauraceae) essential oil against mosquito larvae, *Culex pipiens* (linneaus,
3 1758) (diptera: culicidae) species. *Applied Ecology and Environmental Research*, **21**(1), 287-300,
4 https://doi.org/10.15666/aeer/2101_287300

5 Al-Sagheer A.A., Mahmoud H.K., Reda F.M., Mahgoub S.A. and Ayyat M.S. (2018).
6 Supplementation of diets for *Oreochromis niloticus* with essential oil extracts from lemongrass
7 (*Cymbopogon citratus*) and geranium (*Pelargonium graveolens*) and effects on growth, intestinal
8 microbiota, antioxidant and immune activities. *Aquaculture Nutrition*, **24**, 1006–1014,
9 <https://doi.org/10.1111/anu.12637>

10 AlSalhi M. S., Elumalai K., Devanesan S., Govindarajan M., Krishnappa K. and Maggi F. (2020).
11 The aromatic ginger *Kaempferia galanga* L. (Zingiberaceae) essential oil and its main compounds
12 are effective larvicidal agents against *Aedes vittatus* and *Anopheles maculatus* without toxicity on the
13 non-target aquatic fauna. *Industrial Crops and Products*, **158**, 113012,
14 <https://doi.org/10.1016/j.indcrop.2020.113012>

15 Bandeira-Junior G., Bianchini A.E., de Freitas Souza C., Descovi S.N., da Silva Fernandes L., de
16 Lima Silva L., Felipetto Cargnelutti J. and Baldisserotto B. (2022). The Use of Cinnamon Essential
17 Oils in Aquaculture: Antibacterial, Anesthetic, Growth-Promoting, and Antioxidant Effects. *Fishes*,
18 **7**(3), 133, <https://doi.org/10.3390/fishes7030133>

19 Bendali F., Djebbar F. and Soltani N. (2001). Efficacité comparée de quelques espèces de poissons à
20 l'égard de divers stades de *Culex pipiens* L. dans des conditions de laboratoire. *Parasitica*, **57**, 255-
21 265.

22 Becker A. J., Vaz L. J., Garcia L. D. O., Wasielesky Jr W., Heinzmann B. M., and Baldisserotto B.
23 (2021). Anesthetic potential of different essential oils for two shrimp species, *Farfantepenaeus*
24 *paulensis* and *Litopenaeus vannamei* (Decapoda, Crustacea). *Ciência Rural*, **51**, e20200793.

1 Benelli G. (2015a). Research in mosquito control: current challenges for a brighter future.
2 *Parasitology Research*, **114**, 2801–2805, <https://doi.org/10.1007/s00436-015-4586-9>

3 Benelli G. (2015b). Plant-borne ovicides in the fight against mosquito vectors of medical and
4 veterinary importance: a systematic review. *Parasitology Research*, **114**, 3201–3212,
5 <https://doi.org/10.1007/s00436-015-4656-z>

6 Benelli G., Bedini S., Cosci F., Toniolo C., Conti B. and Nicoletti M. (2015a). Larvicidal and
7 ovideterrent properties of neem oil and fractions against the filariasis vector *Aedes albopictus*
8 (Diptera:Culicidae): a bioactivity survey across production sites. *Parasitology Research*, **114**, 227–
9 236, <https://doi.org/10.1007/s00436-014-4183-3>

10 Benelli G., Bedini S., Flamini G., Cosci F., Cioni P.L., Amira S., Benchikh F., Laouer H., Di Giuseppe
11 G. and Conti B. (2015b). Mediterranean essential oils as effective weapons against the West Nile
12 vector *Culex pipiens* and the Echinostoma intermediate host *Physella acuta*: what happens around?
13 An acute toxicity survey on non-target mayflies. *Parasitology Research*, **114**, 1011–1021,
14 <https://doi.org/10.1007/s00436-014-4267-0>

15 Benelli G., Wilke A.B.B, Bloomquist J.R., Desneux N. and Beier J.C. (2021). Overexposing
16 mosquitoes to insecticides under global warming: a public health concern? *Science of the Total*
17 *Environment*, **762**, 143069, <https://doi.org/10.1016/J.SCITOTENV.2020.143069>

18 Bouzidi O., Tine S., Hamaidia K., Tine-Djebbar F. and Soltani N. (2020): Chemical Composition and
19 Bioefficacy of Essential Oil from Bay Laurel Shrub (Laurales: Lauraceae) against *Culiseta*
20 *longiareolata* (Macquart) (Diptera: Culicidae) Larvae. *Journal of Entomological Science*, **55**(2), 262–
21 272.

22 Bradford M.M. (1976). A rapid and sensitive method for the quantitation of microgram quantities of
23 protein utilizing the principle of protein-dye binding. *Analytical Biochemistry*, **72**, 248–254,
24 [https://doi.org/10.1016/0003-2697\(76\)90527-3](https://doi.org/10.1016/0003-2697(76)90527-3)

1 Brandão F.R., Duncan W.P., Farias C.F.S., de Melo Souza D.C., de Oliveira M.I.B., Souza Rocha
2 M.J., Castro Monteiro P., Majolo C., Célio Maia Chaves M., de Almeida O'Sullivan F.L. and Campos
3 Chagas E. (2022). Essential oils of *Lippia sidoides* and *Mentha piperita* as reducers of stress during
4 the transport of *Colossoma macropomum*. *Aquaculture*, **560**, 738515.

5 Brinza I., Boiangiu R.S., Honceriu I., Abd-Alkhale A.M., Eldahshan O.A., Dumitru G., Hritcu L. and
6 Todirascu-Ciornea E. (2024). Investigating the Potential of Essential Oils from *Citrus reticulata*
7 Leaves in Mitigating Memory Decline and Oxidative Stress in the Scopolamine-Treated Zebrafish
8 Model. *Plants*, **13**(12), 1648, <https://doi.org/10.3390/plants13121648>

9 Bullangpoti V., Mujchariyakul W., Laksanavilat N., and Junhirun P. (2018). Acute toxicity of
10 essential oil compounds (thymol and 1,8-cineole) to insectivorous guppy, *Poecilia reticulata* Peters,
11 1859. *Agriculture and Natural Resources*, **52**(2), 190-194.

12 Campelo D.A.V., Gonçalves I.S., Silva I.C.E., De Moura L.B., Brabo M.F., Barbas L.A.L. and Veras
13 G.C. (2020). Dietary garlic essential oil on development parameters of severum post-larvae. *Revista*
14 *Brasileira de Saúde e Produção Animal*, **21**, e2121252020, [https://doi.org/10.1590/S1519-](https://doi.org/10.1590/S1519-99402121252020)
15 [99402121252020](https://doi.org/10.1590/S1519-99402121252020)

16 Capatina L., Todirascu-Ciornea E., Napoli E.M., Ruberto G., Hritcu L. and Dumitru G. (2020).
17 *Thymus vulgaris* essential oil protects zebrafish against cognitive dysfunction by regulating
18 cholinergic and antioxidants systems. *Antioxidants*, **9**(11), 1083,
19 <https://doi.org/10.3390/antiox9111083>

20 Cheghib Y., Chouahda S. and Soltani N. (2020). Side-effects of a neonicotinoid insecticide (actara®)
21 on a non-target larvivorous fish *Gambusia affinis*: growth and biomarker responses. *The Egyptian*
22 *Journal of Aquatic Research*, **46**, 167-172, <https://doi.org/10.1016/j.ejar.2019.12.007>

23 Chibani S., Boukabache M., Nouichi A., Küçükaydın M.T., Küçükaydın S. and Duru M.E. (2024)
24 Chemical composition, anticholinesterase, antioxidant, and antifungal activities of the essential oil

1 from *Laurus nobilis* leaves growing in Algeria. *African Journal of Biological Sciences*, **6**(10), 7639-
2 7664, <https://doi.org/10.48047/AFJBS.6.10.2024.7639-7664>

3 Cordiano R., Di Gioacchino M., Mangifesta R., Panzera C., Gangemi S. and Minciullo P.L. (2023).
4 Malondialdehyde as a potential oxidative stress marker for allergy-oriented diseases: an update.
5 *Molecules*, **28**(16), 5979, <https://doi.org/10.3390/molecules28165979>

6 Denna A., Chouahda S., Berghiche H. and Soltani N. (2022). Assessment of Water Quality of Some
7 Aquatic Systems in Northeast Algeria by Usea Non-Target Fish *Gambusia affinis* During the
8 Breeding Period: Growth and Biomarkers Responses. *Fresenius Environmental Bulletin*, **31** (1), 677-
9 688.

10 Dinno A. (2024). dunn.test: Dunn's Test of Multiple Comparisons Using Rank Sums. R package
11 version 1.3.6, <<https://CRAN.R-project.org/package=dunn.test>>.

12 Draper H.H. and Hadley M. (1990). Malondialdehyde determination as index of lipid peroxidation.
13 *Methods in Enzymology*, **186**, 421–431. [https://doi.org/10.1016/0076-6879\(90\)86135-I](https://doi.org/10.1016/0076-6879(90)86135-I)

14 Ellman G.L., Courtney K.D., Andres V. and Featherstone R. (1961). A new and rapid colorimetric
15 determination of acetylcholinesterase activity. *Biochemical Pharmacology*, **7**, 88–95,
16 [https://doi.org/10.1016/0006-2952\(61\)90145-9](https://doi.org/10.1016/0006-2952(61)90145-9)

17 Fidan H., Stefanova G., Kostova I., Stankov S., Damyanova S., Stoyanova A. and Zheljazkov V.D.
18 (2019). Chemical composition and antimicrobial activity of *Laurus nobilis* L. essential oils from
19 Bulgaria. *Molecules*, **24**(4), 804, <https://doi.org/10.3390/molecules24040804>

20 Goldsworthy J., Mordue W. and Guthkelch J. (1972). Studies on insect adipokinetic hormones.
21 *General and Comparative Endocrinology*, **18**, 545–551, [https://doi.org/10.1016/0016-](https://doi.org/10.1016/0016-6480(72)90034-2)
22 [6480\(72\)90034-2](https://doi.org/10.1016/0016-6480(72)90034-2)

23 Govindarajan M. and Benelli G. (2016a). *Artemisia absinthium*-borne compounds as novel larvicides:
24 effectiveness against six mosquito vectors and acute toxicity on non-target aquatic organisms.
25 *Parasitology Research*, **115**, 4649-4661, <https://doi.org/10.1007/s00436-016-5257-1>

1 Govindarajan M. and Benelli G. (2016b). α -Humulene and β -elemene from *Syzygium zeylanicum*
2 (Myrtaceae) essential oil: highly effective and eco-friendly larvicides against *Anopheles subpictus*,
3 *Aedes albopictus*, and *Culex tritaeniorhynchus* (Diptera: Culicidae). *Parasitology Research*, **115**,
4 2771-2778, <https://doi.org/10.1007/s00436-016-5025-2>

5 Govindarajan M., Rajeswary M. and Benelli G. (2016a). Chemical composition, toxicity and non-
6 target effects of *Pinus kesiya* essential oil: An eco-friendly and novel larvicide against malaria,
7 dengue and lymphatic filariasis mosquito vectors. *Ecotoxicology and Environmental Safety*, **129**, 85-
8 90, <https://doi.org/10.1016/j.ecoenv.2016.03.007>

9 Habig W.H., Pabst M.J. and Jakoby W.B. (1974). Glutathione S-transferases the first enzymatic step
10 in mercapturic acid formation. *Biological Chemistry*, **249**(22), 7130–7139,
11 [https://doi.org/10.1016/S0021-9258\(19\)42083-8](https://doi.org/10.1016/S0021-9258(19)42083-8)

12 Haddadi I., Bouri A., Labbaci M. and Loukid B. (2022). Characterization and evaluation of some
13 populations of noble laurel (*Laurus nobilis* L) in northern Algeria. *Genetics & Biodiversity Journal*,
14 **6**(2), 30–45, <https://doi.org/10.46325/gabj.v6i2.187>

15 Harrell Jr F. (2025). Hmisc: Harrell Miscellaneous. R Package version 5.2-2, [https://CRAN.R-](https://CRAN.R-project.org/package=Hmisc)
16 [project.org/package=Hmisc](https://CRAN.R-project.org/package=Hmisc).

17 Huang G.Y., Liu Y.S., Chen X.W., Liang Y.Q., Liu S.S., Yang Y.Y., Hu X.L., Shi W.J., Tian F.,
18 Zhao J.L., Chen J. and Ying G.G. (2016). Feminization and masculinization of western mosquitofish
19 (*Gambusia affinis*) observed in rivers impacted by municipal wastewaters. *Scientific reports*, **6**(1),
20 20884, <https://doi.org/10.1038/srep20884>

21 Ihaka R. and Gentleman R. (1996). R: a language for data analysis and graphics. *Computational and*
22 *Graphical Statistics*, **5**, 299-314.

23 Jeevitha S., Gajendran T. and Saranya K. (2025). Eggshell-derived Hydroxyapatite Nanocarriers for
24 Neem Oil based Nanoemulsion: Toward Sustainable Pest Control. *Global NEST Journal* [Preprint],
25 <https://doi.org/10.30955/gnj.06868>.

1 Karabörklu S. and Ayvaz A. (2023). A comprehensive review of essential oil components in stores-
 2 product pest management. *Journal of Plant Diseases & Protection*, **130**, 449-481,
 3 <https://doi.org/10.1007/s41348-023-00712-0>

4 Kassambara A. and Mundt F. (2020). factoextra: Extract and Visualize the Results of Multivariate
 5 Data Analyses. R package version 1.0.7. <<https://CRAN.R-project.org/package=factoextra>>.

6 Kassambara A. (2023). ggpubr: 'ggplot2' Based Publication Ready Plots. R package version 0.6.0,
 7 <<https://CRAN.R-project.org/package=ggpubr>>.

8 Kassambara A. (2023). rstatix: Pipe-Friendly Framework for Basic Statistical Tests. R package
 9 version 0.7.2, <<https://CRAN.R-project.org/package=rstatix>>.

10 Keles E., Yildiz T. and Ozgenc, E. (2024). Assessment of biomarker-based ecotoxic effects in
 11 combating microplastic pollution - A review. *Global NEST Journal*, **26**(1),
 12 <https://doi.org/10.30955/gnj.005398>.

13 Le S., Josse J. and Husson F. (2008). FactoMineR: An R Package for Multivariate Analysis. *Journal*
 14 *of Statistical Software*, **25**(1), 1-18, <https://doi.org/10.18637/jss.v025.i01>

15 Marzouki H., Khaldi A., Marongiu B., Piras A. and Harzallah-Skhiri F. (2011). Chemical
 16 polymorphism of essential oils from populations of *Laurus nobilis* grown on Tunisia, Algeria and
 17 France. *Natural Product Communications*, **6**(10), <https://doi.org/10.1177/1934578X1100601019>

18 Mavrogenis M., Lepetit B., Kroth P.G. and Tsirtsis G. (2023). Effects of dimethoate, an
 19 organophosphate insecticide, on photosynthesis of five selected phytoplankton species. *Global NEST*
 20 *Journal*, **25**(6), <https://doi.org/10.30955/gnj.004565>.

21 Mazari A.M., Zhang L., Ye Z.W., Zhang J., Tew K.D. and Townsend D.M. (2023). The multifaceted
 22 role of glutathione S-transferases in health and disease. *Biomolecules*, **13**(4), 688,
 23 <https://doi.org/10.3390/biom13040688>

24 Menakh M., Boutellaa S., Benabied K., Zaouani R. and Abou-Mustapha M. (2024). A comparative
 25 Analysis of Algerian natural extracts as Solo and Synergistically against *Culex pipiens* (Diptera:

1 Culicidae) Larvae. *International Journal of Tropical Insect Science*, **44**(4), 1817-1827,
2 <https://doi.org/10.1007/s42690-024-01280-y>

3 Nabila B., Piras A., Fouzia B., Falconieri D., Kheira G., Fedoul F.F. and Sekkal-Rahal M. (2020).
4 Chemical composition and antibacterial activity of the essential oil of *Laurus nobilis* leaves. *Natural*
5 *Product Research*, **36**(4), 989–993, <https://doi.org/10.1080/14786419.2020.1839450>

6 Narra M.R., Rajender K., Reddy R.R., Murty U.S. and Begum G. (2017). Insecticides induced stress
7 response and recuperation in fish: biomarkers in blood and tissues related to oxidative damage.
8 *Chemosphere*, **168**, 350-357, <https://doi.org/10.1016/j.chemosphere.2016.10.066>

9 de Oliveira A. C., Simões R. C., Tavares C. P., Lima C. A., Sá I. S. C., da Silva F. M., Figueira Elder
10 A.G., Nunomura S.M., Nunomura Rita C.S and Roque R. A. (2022). Toxicity of the essential oil from
11 *Tetradenia riparia* (Hochstetter.) Codd (Lamiaceae) and its principal constituent against malaria and
12 dengue vectors and non-target animals. *Pesticide Biochemistry and Physiology*, **188**, 105265,
13 <https://doi.org/10.1016/j.pestbp.2022.105265>

14 Posit team (2024). RStudio : Integrated Development Environment for R. Posit Software, PBC,
15 Boston, MA. URL: <http://www.posit.co/>

16 merino de Paz N., Carrillo-Palau M., Hernández-Camba A., Abreu-González P., de Vera-González
17 A., Gonzalez-Delgado A., Martin-Gonzalez C, Gonzalez-Gay M.A. and Ferraz-Amaro I. (2024).
18 Association of Serum Malondialdehyde Levels with Lipid Profile and Liver Function in Patients with
19 Inflammatory Bowel Disease. *Antioxidants*, **13**(10), 1171, <https://doi.org/10.3390/antiox13101171>

20 Pohlert T. (2024). PMCMRplus: Calculate Pairwise Multiple Comparisons of Mean Rank Sums
21 Extended. R package version 1.9.12, <https://CRAN.R-project.org/package=PMCMRplus>.

22 R Core Team (2024). R: a language and environment for statistical computing. R Foundation for
23 Statistical Computing, Vienna, Austria. URL: <https://www.R-project.org/>

1 Revelle W. (2024). *_psych*: Procedures for Psychological, Psychometric, and Personality Research.
 2 Northwestern University, Evanston, Illinois. R package version 2.4.12, <[https://CRAN.R-](https://CRAN.R-project.org/package=psych)
 3 [project.org/package=psych](https://CRAN.R-project.org/package=psych)>.

4 Roldan-Juarez J., Pinares R., Smith C.E., Llerena C.A., Machaca V. and Pizarro D.M. (2023).
 5 Microencapsulated essential oils influence the growth and foregut histomorphometry of Nile tilapia
 6 (*Oreochromis niloticus*) fingerlings. *Veterinary and Animal Science*, **22**, 100316,
 7 <https://doi.org/10.1016/j.vas.2023.100316>

8 Saccol E.M., Toni C., Pês T.S., Ourique G.M., Gressler L.T., Silva L.V.F., Mourao R.H.V., Oliveira
 9 R.B., Baldisserotto B. and Pavanato M.A. (2016). Anaesthetic and antioxidant effects of *Myrcia*
 10 *sylvatica* (G. Mey.) DC. and *Curcuma longa* L. essential oils on tambaqui (*Colossoma macropomum*).
 11 *Aquaculture Research*, **48**(5), 2012-2031, <https://doi.org/10.1111/are.13034>

12 Salbego J., Becker A. G., Gonçalves J. F., Menezes C. C., Heldwein C. G., Spanevello R. M., Loro
 13 V.L., Schetinger M.R.C., Morsch V.M., Heinzmann B.M., Baldisserotto B.M. (2014). The essential
 14 oil from *Lippia alba* induces biochemical stress in the silver catfish (*Rhamdia quelen*) after
 15 transportation. *Neotropical Ichthyology*, **12**, 811–818. <https://doi.org/10.1590/1982-0224-20130178>

16 Shehata A.I., Shahin S.A., Taha S.A., Elmaghraby A.M., Alhoshy M., Soliman A.A., Amer A.A.,
 17 Hendy A.M., Gewaily M.S., Teiba I.I. and El Basuini M.F. (2025), Essential Oil of Bay Laurel
 18 (*Laurus nobilis*) Enhances Growth and Immunity in Cold-Stressed Nile Tilapia (*Oreochromis*
 19 *Niloticus*). *Journal of Animal Physiology and Animal Nutrition*. <https://doi.org/10.1111/jpn.14107>

20 Shibko S., Koivistoinen P., Tratnyek C.A., Newhall A.R. and Friedman L. (1966). A method for
 21 sequential quantitative separation and determination of protein, RNA, DNA, lipid, and glycogen from
 22 a single rat liver homogenate or from a subcellular fraction. *Analytical Biochemistry*, **19**, 514–528,
 23 [https://doi.org/10.1016/0003-2697\(67\)90242-4](https://doi.org/10.1016/0003-2697(67)90242-4)

24 Sönmez A. Y., Bilen S., Alak G., Hisar O., Yanik T., and Biswas G. (2015). Growth performance
 25 and antioxidant enzyme activities in rainbow trout (*Oncorhynchus mykiss*) juveniles fed diets

1 supplemented with sage, mint and thyme oils. *Fish Physiology & Biochemistry*, **41**, 165–175.
2 <https://doi.org/10.1007/s10695-014-0014-9>

3 Souza C. F., Baldissera M. D., Silva L. L., Geihs M. A., and Baldisserotto B. (2018b). Is monoterpene
4 terpinen-4-ol the compound responsible for the anesthetic and antioxidant activity of *Melaleuca*
5 *alternifolia* essential oil (tea tree oil) in silver catfish? *Aquaculture*, **486**, 217–223.
6 <https://doi.org/10.1016/j.aquaculture.2017.12.025>

7 Sule R.O., Condon L. and Gomes A.V. (2022). A common feature of pesticides: Oxidative stress-the
8 role of oxidative stress in pesticide-induced toxicity. *Oxidative Medicine and Cellular Longevity*.
9 5563759, 31 p, <https://doi.org/10.1155/2022/5563759>

10 Tang F., Tu H., Shang Q., Gao X. and Liang P. (2020). Molecular cloning and characterization of
11 five glutathione S-transferase genes and promoters from *Micromelalopha troglodyta* (Graeser)
12 (Lepidoptera: Notodontidae) and their response to tannic acid stress. *Insects*, **11**(6), 339-355,
13 <https://doi.org/10.3390/insects11060339>

14 Toni C., Martos-Sitcha J. A., Baldisserotto B., Heinzmann B. M., de Lima Silva L., Martínez-
15 Rodríguez G., and Mancera J. M. (2015). Sedative effect of 2-phenoxyethanol and essential oil of
16 *Lippia alba* on stress response in gilthead sea bream (*Sparus aurata*). *Research in veterinary science*,
17 **103**, 20-27.

18 Verheggen F., Barrès, B., Bonafos R., Desneux N., Escobar-Gutiérrez A.J., Gachet E., Laville J.,
19 Siegwart M., Thiéry D. and Jactel H. (2022). Producing sugar beets without neonicotinoids: An
20 evaluation of alternatives for the management of viruses-transmitting aphids. *Entomologia Generalis*,
21 **42**, 491–498, <https://doi.org/10.1127/entomologia/2022/1511>

22 WHO (World Health Organization)(1996). Report of the WHO informal consultation on the
23 evaluation and testing of insecticides. CTD/WHOPES/IC/96.1:69.

24 Wickham H. (2016). ggplot2: Elegant Graphics for Data Analysis. Springer-Verlag New York, 2016.

1 Xu D., Xiang X., Li X., Xu N., Zhang W., Mai K. and Ai Q. (2022). Effects of dietary vegetable oils
 2 replacing fish oil on fatty acid composition, lipid metabolism and inflammatory response in adipose
 3 tissue of large yellow croaker (*Larimichthys crocea*). *Journal of Marine Science and Engineering*,
 4 **10**(11), 1760, <https://doi.org/10.3390/jmse10111760>

5 Zaidi N. and Soltani N. (2013). Laboratory evaluation of environmental risk assessment of pesticides
 6 for mosquito control: toxicity of dimilin on a larvivorous fish, *Gambusia affinis*. *Advances in*
 7 *Environmental Biology*, **7**(4), 605-613.

8 Zeppenfeld C. C., Toni C., Becker A. G., Miron D. S., Parodi T. V., Heinzmann B. M., Barcellos
 9 L.J.G., Koakoski G., da Rosa J.G.S., Loro V.L., da Cunha M.A. and Baldisserotto B. (2014).
 10 Physiological and biochemical responses of silver catfish, *Rhamdia quelen*, after transport in water
 11 with essential oil of *Aloysia triphylla* (L'Herit) Britton. *Aquaculture*, 418-419, 101–107.
 12 <https://doi.org/10.1016/j.aquaculture.2013.10.013>

13

14 Zhang S., Wang J., Liu X., Qu F., Wang X., Li Y., Sun Y. (2019). Microplastics in the environment:
 15 A review of analytical methods, distribution, and biological effects. *TrAC Trends in Analytical*
 16 *Chemistry*, **111**, 62-72, <https://doi.org/10.1016/j.trac.2018.12.002>