

1 **Health Risk Assessment and Levels of Heavy Metals Contaminated Drinking Water**
 2 **Used by Both Adults and Children from Nawanshahr Town**

3 Insha Jadoon¹, Khalid Ahmad¹, Abdul Nazir*¹, Sabaz Ali Khan² Ahmed Mahmoud Ismail³,
 4 ^{4*}, Amal Matar⁵, Alaa S. Alharbi⁵, Hoda Ali Farag Saleh⁵

5 ¹Department of Environmental Sciences, COMSATS University Islamabad, Abbottabad Campus,
 6 Abbottabad, Pakistan

7 ²Department of Biotechnology, COMSATS University Islamabad, Abbottabad Campus, Abbottabad,
 8 Pakistan

9 ³Department of Arid Land Agriculture, College of Agricultural and Food Sciences, King Faisal
 10 University, Al-Ahsa, 31982, Saudi Arabia.

11 ⁴Pests and Plant Diseases Unit, College of Agriculture and Food Sciences, King Faisal University, Al-
 12 Ahsa 31982, Saudi Arabia

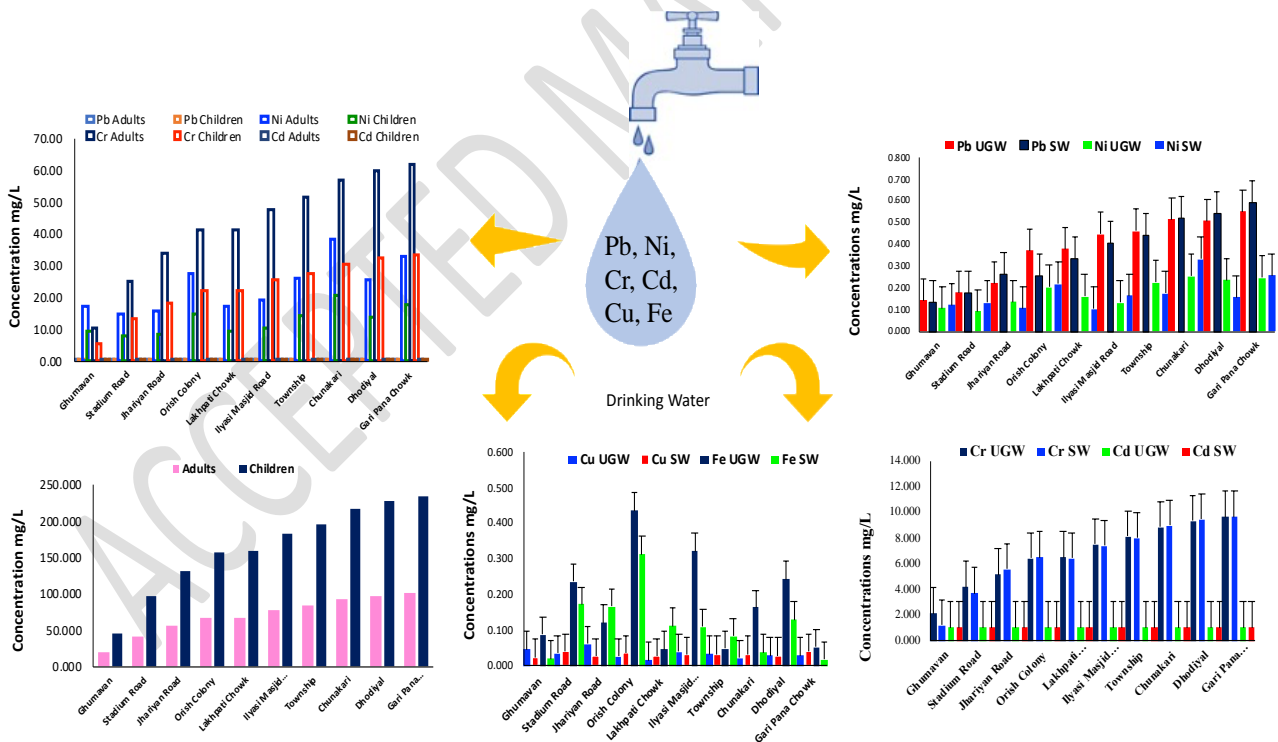
13 ⁵Food and Nutrition Science Department, College of Agricultural and Food Science, King Faisal
 14 University, Al-Ahsa, 31982, Saudi Arabia.

15
 16 *Corresponding Author: amismail@kfu.edu.sa (Ahmed Mahmoud Ismail);
 17 abdulnazeer@cuiatd.edu.pk (Abdul Nazir)

18

19 **Graphical abstract**

20



21

22

23

24
25
26
27
28
29
30
31
32
33
34
35
36
37
38
39
40
41
42
43
44
45
46
47
48
49
50
51
52
53
54
55
56

Abstract

Heavy metal ions are very toxic to human and can be introduced into the water through numerous sources such as industry wastes, coal mining, agriculture activity and human-caused activities. The current study was conducted to quantify Pb, Ni, Cr, Cd, Cu, and Fe in drinking water (surface and subsurface water) from Nawanshahr Town, Abbottabad, Pakistan, and to evaluate the associated threat to the health of the inhabitants. An atomic absorption spectrometer (Perkin Elmer, AAS-700) was utilized to quantify the metals and compare them to the threshold level set by Pak EPA. Ni, Pb, Cr, Cd, and Cu levels were higher than Pak-EPA permissible limits, so they were unacceptable. Considering the HM level, health risk assessments such as Consumers' Daily Intake (CDI), Hazard Quotient (HQ), Health Index (HI), and Targeted Cancer Risk (TCR) were calculated. The order of CDI values in both adults and children was $Cr > Cu > Pb > Fe > Ni > Cd$ and the values of HQ were higher than 1 for all HMs in water samples, indicating non-carcinogenic risk to the residents except for Ni. The HI values >1 for all metals of each site indicate adverse non-carcinogenic health effects. Moreover, the TCR results for all metals were high in all locations, indicating the carcinogenic risk. The present study can be helpful for residents and government officials to take protective measures and minimize contamination of drinking water with heavy metals.

Keywords: Heavy metals, drinking water, health risk index, Abbottabad, cancer risk.

57

58

59

60 **1. Introduction**

61 The water from lakes, ponds, rivers, streams, and underground water (hand pumps and tube
62 wells) are two natural sources. Still, the increasing population causes water contamination,
63 which is difficult to reinstate. Hence, there is a need to protect water quality (Nawaz et al.
64 2015).

65 Earth's crust has heavy metals (HMs) with molar masses ranging from 63.5 to 200.6 grams per
66 mole and a density of more than 5 g/cm³ (Charlesworth et al. 2011). These metals enter the
67 human body via the mouth, air passage, and skin. Volcanic eruptions, forest fires, and leaching
68 from soil and rocks, are natural sources and mining, fertilizers and pesticides, industrialization,
69 and urbanization, are anthropogenic sources of HMs pollution in water resources (Jyothi et al.
70 2020), which is a major concern for water safety, human health, and quality assurance (Shaheen
71 et al. 2016). Metals are among the environmental contaminants of special involvement due to
72 their noxiousness and bioaccumulation. Some heavy metals, such as Cr, Fe, Cu, Pb, Cd, and
73 Ni, are potentially dangerous in their combined or elemental forms (Gaur Sandeep et al. 2012).
74 Lead occurs in the earth's crust and many common home items. The most frequent lead sources
75 in drinking water are waterworks and lead pipes (Duff, 2002). Power plants, waste incinerators,
76 nickel-cadmium batteries, fertilizers, and the metallurgical industry all cause nickel to enter
77 water sources. According to Ahmed et al. (2020), the chromium leaching from rocks and
78 above-ground soils is the main natural source in aquatic ecosystems. The effluent from the
79 electroplating, leather, and textile industries adds chromium to the water bodies (Ali et al.
80 2019). Galvanized water pipes allow cadmium to enter the water, and cadmium also finds its
81 way into water through sewage sludge, manure, contaminated groundwater, and mines (Duff,
82 2002). Copper can get into drinking water directly through contaminated well water or by
83 causing damage to copper piping. It takes up copper leaks from plumbing components,
84 including pipes, faucets, and brass faucets that taint the water. According to Kamboj et al.
85 (2019), frequent sources of iron (Fe) in water are rock erosion, industrial effluents, acidic
86 mining effluents, and landfill leachates.

87 Contaminated water is to blame for up to 90% of the population's exposure to HMs, up to 50%
88 of illnesses and 40% of deaths (Shaheen et al. 2016). HMs can contaminate fresh or processed
89 water (Hajeb et al. 2014) and can be harmful if taken in amounts above the permitted limit
90 (Dghaim et al. 2015). Bioaccumulation of HM in humans affects mutagenesis, carcinogenesis,

91 and toxicity (Daud et al. 2017). Due to increased blood pressure, lead can harm the kidneys,
92 especially in children under six years (Ahmed et al. 2022). Lead can also block the synthesis
93 of hemoglobin. The symptoms of asthma, heart disease, nausea, and dizziness can all be made
94 worse by consuming too much nickel (Ni) over the safe limit. A higher concentration of Cr has
95 been linked to cancer, respiratory issues, allergy and asthmatic reactions, and skin
96 hypersensitivity (Haque et al. 2020). According to Henson et al. (2013), Cd can induce lung
97 damage, alveolar tumors, impaired fertility, early birth, and flu-like symptoms (chills, fever,
98 myalgia). Likewise, Cu levels that are too high can lead to nose, ocular, and tongue sensitivity,
99 as well as stomach distress and diarrhea. Overconsumption of the daily recommended amount
100 of Fe may result in intestinal pain, hypothyroidism, depression, osteoporosis, cirrhosis,
101 malignant tumors, cardiovascular disease, diabetes, depression, osteoporosis, infertility,
102 hepatitis, hypogonadism, and early mortality (Tagliabue et al. 2014).

103 In Pakistan, contaminated drinking water supply infrastructure from natural and human-caused
104 activities, such as mining, is the cause of both groundwater and tap water contamination. Poor
105 water supply and subpar sterilizing services also contribute to the issue. The Abbottabad
106 neighborhood's drinking water is of poor quality. HMs occurrence in Abbottabad's water
107 resources is severe and contributes to several ailments connected to the water. Water quality
108 surveys showed that most of the nation's regions lack water that meets Pak-EPA standards
109 (Raza et al. 2017). There are few and occasional studies on drinking water contamination in
110 the research region. However, no attention has been paid to the amount of HM in drinking
111 water and the potential harm to Abbottabad and the surrounding communities. Thus, this was
112 the first baseline study to investigate the drinking water contamination with heavy metals and
113 associated health problems. Given this, the current study was to quantify the amounts of Pb,
114 Ni, Cr, Cd, Cu, and Fe in drinking water from Nawanshahr Town, Abbottabad and the health
115 issues.

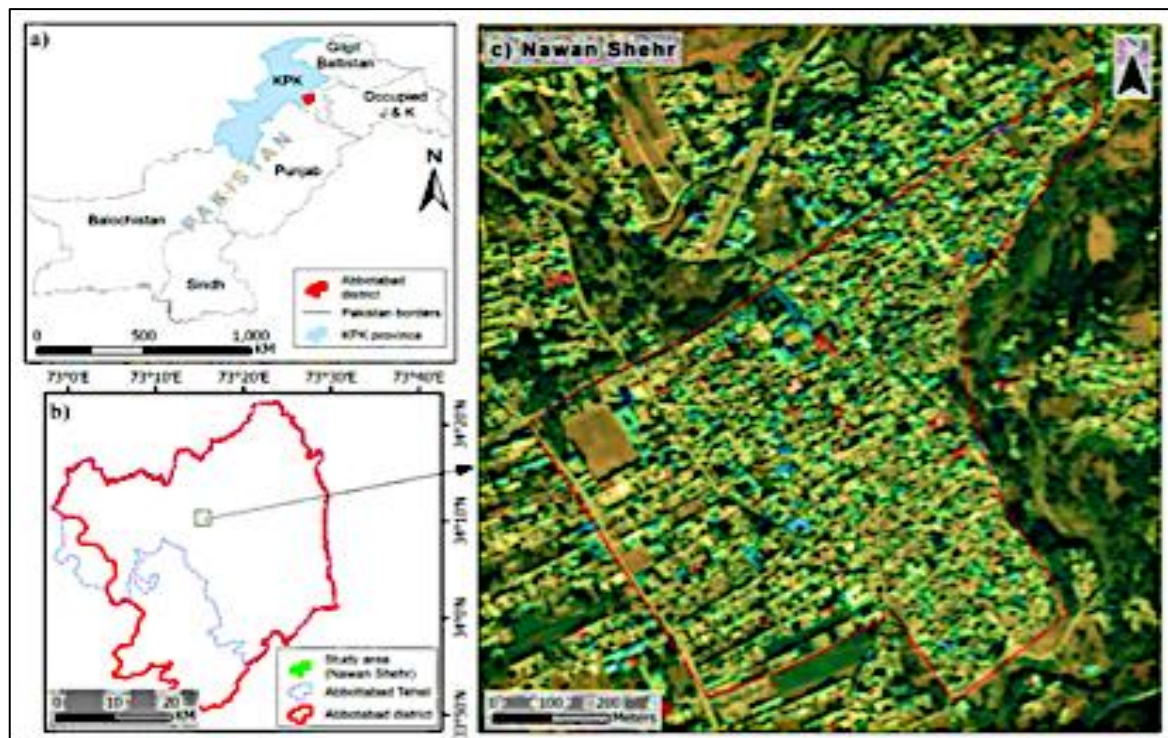
116

117 **2. Materials and Methods**

118 *2.1 Research Area*

119 The research site was in Nawanshahr, a town in the Abbottabad district of Khyber
120 Pakhtunkhwa (Figure 1). It is situated on Murree Road between 34°10'N and 73°16'E near the
121 tourist spots of Thandiani and Nathia Gali (8000 feet). There are 35,737 inhabitants in
122 Nawanshahr; 50.04% are males, and 49.96% are females. The town has a humid subtropical
123 climate with long summers and short winters. January has the lowest temperature of 6.7 °C,

124 while June has the highest temperature of 25.6 °C. The town has an annual mean precipitation
125 of 166.08 mm and a literacy rate of 56.6% (Ullah et al. 2019).



126
127 **Figure 1.** Map of Nawanshahr, Abbottabad.

128
129 *2.2 Sampling*

130 The region under investigation, Nawanshar Town, was separated into four subzones, and 10
131 sampling locations were chosen: Ghumavan, Stadium Road, Jhariyan Road, Orish Colony,
132 Lakhpati Chowk, Ilyasi Masjid Road, Township, Dhodiyal, Chunakari, and Gari Pana Chowk.
133 100 samples of drinking water from the underground and supplies were taken based on
134 availability. Fresh samples were obtained from each location and put in pre-washed 100 mL
135 plastic bottles (Parveen et al. 2017). The 100 ml plastic bottles were filled to the brim, and
136 a few drops of pure HNO₃ acid were poured into each bottle. Sampling bottles were acid-
137 cleaned with 5% HNO₃ to prevent contamination and rinsed twice with deionized water.

138
139 *2.3 Digestion*

140 The procedure outlined earlier by Parvin et al. (2022) was followed when digesting water
141 samples. A mixture containing 70% HNO₃ (10 ml) and sample water (2 ml) in a conical flask
142 was heated in a fume hood for 20 minutes at 80° C and cooled to room temperature. Then 5 ml
143 HClO₄ was added to the mixture and heated at 180 °C till a clear solution. The resultant mixture
144 was filtered off (Whatman filter paper # 42), and the filtrate was taken in a 50 mL volumetric

145 flask and distilled water to fill up to the mark. The same procedure was used to prepare a blank
146 in addition to a batch of six samples.

147

148 *2.4 Instrumentation and Data Analysis*

149 The standard solutions for each metal were prepared using stock solutions with a level of 1000
150 mg/L. The atomic absorption spectrophotometer (AA 700 Perkin Elmer) with hollow cathode
151 lamps was used to quantify Pb, Ni, Cr, Cd, Cu, and Fe under optimal analytical conditions
152 (Abeer et al. 2020). Descriptive statistics calculations were performed using Microsoft Excel
153 365 (Version 2016).

154

155 *2.5 Health Risk Assessment*

156 *2.5.1 Consumer Daily Intake*

157 The health risk was assessed by estimating the consumer's daily intake of selected metals
158 based on the water consumption rate and comparing it to the reference dose (Muhammad et
159 al. 2011; Momodu and Anyakora, 2010).

$$160 \quad \text{CDI} = (C_m \text{ (DI/BM)}) \text{-----}(1)$$

161 Where: C_m . HMs concentration (mg/L) in water samples, CDI. Consumer daily intake (2
162 L/day), BM. Average body mass for adults (70 kg), for children (30 kg) (Tong et al. 2016).

163

164 *2.5.2 Noncarcinogenic risk*

165 The ratio between the consumer's daily intake (CDI) and reference dose (R_fD) for each metal
166 is the hazard quotient (HQ). Each metal's HRI value should be lower than 1 (Parveen et al.
167 2017). The HRI was calculated using Equation 2.

$$168 \quad \text{HQ} = \text{CDI} / R_fD \text{-----} (2)$$

169 Where R_fD . Reference dose of certain metals (R_fD for Pb 0.0035 mg/kg/day, Fe 0.007
170 mg/kg/day, Cr 0.003 mg/kg/day, Cu 0.004 mg/kg/day, Cd 0.005 mg/kg/day and Ni 0.002
171 mg/kg/day).

172 The heavy metal HQ sum is the Hazard Index (HI) and is determined using the following
173 Equation.

$$174 \quad \text{HI} = \text{HQ}_{Cd} + \text{HQ}_{Cr} + \text{HQ}_{Cu} + \text{HQ}_{Fe} + \text{HQ}_{Ni} + \text{HQ}_{Pb} \text{-----} (3)$$

175 Where: HQ is Hazard quotients for metals.

176

177 *2.5.3 Carcinogenic risk*

178 When people consume heavy metals through drinking water, their exposure to cancer risk is
179 estimated, known as the target cancer risk (TCR). The TCR in water for human consumption
180 was calculated using Equation 4 (Parveen et al. 2017).

$$181 \quad TCR = (MC \times DI \times CPS \times EFR \times EDTot) / (BW \times AT) \text{ ----- (4)}$$

182 Where: The sample metal concentration (MC) was expressed in mg/L. The daily consumption
183 is 2 L/day. EFR stands for Exposure Frequency Rate and refers to the annual exposure rate of
184 350 days for adults and children. CPS is Carcinogenicity Slope and values for Pb = 0.0085, Ni
185 = 0.84, Cr = 0.041, and Cd = 0.061 mg/day. ED tot. the overall exposure period (26 years for
186 adults and 6 years for youngsters). The body weight (BW) is 70 kg for adults and 30 kg for
187 children. Atc is the average time carcinogen (0.6 h/day).

188 3. Results and Discussion

189 The current investigation involved 50 samples from supply water (SW) and underground
190 (UGW) sources. A sample of digested water was tested for Pb, Ni, Cr, Cd, Cu, and Fe. The
191 average concentration of HMs in drinking water was tabulated in Table 1.

192 3.1 Comparison of metal concentration

193 Lead levels were between 0.136 ± 0.064 to 0.593 ± 0.076 mg/L and 0.144 ± 0.194 to 0.552 ± 0.040
194 mg/L in samples of groundwater and surface water, respectively. Similarly, the nickel ranges
195 in groundwater from 0.093 ± 0.013 to 0.253 ± 0.010 mg/L in any respect locations, and
196 surface water samples it ranged from 0.103 ± 0.086 to 0.332 ± 0.037 mg/L. Iron
197 concentrations in groundwater ranged from 0.045 ± 0.011 to 0.433 ± 0.080 mg/L, while in-
198 floor water samples ranged from 0.016 ± 0.001 to 0.313 ± 0.047 mg/L, respectively. However,
199 the Ni, As, Pb, and Fe concentrations exceeded the WHO drinking water limits (Abeer et al.
200 2020). Pb in drinking water could have leaked from an outdated plumbing system. Pb poisoning
201 impairs the brain system, the digestive tract, and the kidneys. Pb poisoning weakens memory,
202 impairs mental clarity, and results in anemia in children, who are particularly susceptible to it
203 (Muhammad et al. 2011). Cadmium ranges in groundwater from 0.016 ± 0.001 to 0.027 ± 0.003
204 mg/L, while the ones in floor water samples ranged from 0.012 ± 0.001 to 0.025 ± 0.002 mg
205 /L. Copper levels in surface water and underground water samples were between 0.100 ± 0.009
206 and 2.500 ± 0.003 , and 0.400 ± 0.001 to 1.900 ± 0.001 mg/L, respectively. Mining operations
207 in Abbottabad City and the weathering and erosion of Cd from bedrock can be the reasons for

208 the higher Cd concentrations in consuming water samples (Raza et al. 2017). Hand pumps,
209 bore wells, tube wells, and derived offer the consuming water and different home requirements
210 for the citizens of the studies region.

ACCEPTED MANUSCRIPT

Table 1. Heavy metals concentrations in drinking water collected from UGW and SW sources in Nawanshahr Town, Abbottabad

Sampling Sites Concentration mg/L	Pb		Ni		Cr		Cd		Cu		Fe	
	UGW	SW	UGW	SW	UGW	SW	UGW	SW	UGW	SW	UGW	SW
Ghumavan	0.144 ± 0.194	0.136 ± 0.064	0.106 ± 0.038	0.122 ± 0.064	2.106 ± 1.276	1.218 ± 1.338	0.017 ± 0.004	0.012 ± 0.001	0.600 ± 0.003	0.400 ± 0.001	0.087 ± 0.121	0.019 ± 0.018
Stadium Road	0.178 ± 0.084	0.176 ± 0.001	0.093 ± 0.013	0.131 ± 0.002	4.169 ± 0.741	3.683 ± 1.278	0.016 ± 0.001	0.018 ± 0.001	0.500 ± 0.003	0.900 ± 0.001	0.235 ± 0.082	0.171 ± 0.000
Jhariyan Road	0.220 ± 0.093	0.259 ± 0.023	0.134 ± 0.019	0.107 ± 0.062	5.144 ± 0.387	5.537 ± 0.064	0.019 ± 0.002	0.021 ± 0.000	0.100 ± 0.009	0.600 ± 0.003	0.120 ± 0.040	0.166 ± 0.058
Orish Colony	0.371 ± 0.069	0.253 ± 0.040	0.204 ± 0.066	0.218 ± 0.012	6.412 ± 0.651	6.474 ± 0.258	0.019 ± 0.002	0.023 ± 0.001	0.500 ± 0.002	0.400 ± 0.003	0.433 ± 0.080	0.313 ± 0.047
Lakhpati Chowk	0.378 ± 0.010	0.333 ± 0.054	0.161 ± 0.035	0.103 ± 0.086	6.490 ± 0.236	6.419 ± 0.549	0.019 ± 0.002	0.023 ± 0.001	0.500 ± 0.004	0.500 ± 0.003	0.045 ± 0.011	0.112 ± 0.108
Ilyasi Masjid Road	0.447 ± 0.034	0.405 ± 0.095	0.131 ± 0.093	0.165 ± 0.001	7.511 ± 0.249	7.373 ± 0.373	0.025 ± 0.002	0.023 ± 0.002	0.900 ± 0.006	1.100 ± 0.004	0.321 ± 0.383	0.108 ± 0.079
Township	0.459 ± 0.062	0.440 ± 0.093	0.225 ± 0.054	0.176 ± 0.085	8.112 ± 0.147	8.013 ± 0.220	0.025 ± 0.005	0.020 ± 0.004	1.200 ± 0.003	1.300 ± 0.006	0.048 ± 0.038	0.082 ± 0.036
Chunakari	0.514 ± 0.017	0.523 ± 0.045	0.253 ± 0.010	0.332 ± 0.037	8.852 ± 0.157	8.957 ± 0.119	0.025 ± 0.002	0.024 ± 0.001	1.400 ± 0.003	1.200 ± 0.002	0.162 ± 0.142	0.038 ± 0.049
Dhodiyaal	0.509 ± 0.018	0.541 ± 0.024	0.236 ± 0.068	0.155 ± 0.096	9.328 ± 0.322	9.441 ± 0.004	0.025 ± 0.002	0.023 ± 0.005	1.700 ± 0.004	1.900 ± 0.001	0.241 ± 0.220	0.128 ± 0.174
Gari Pana Chowk	0.552 ± 0.040	0.593 ± 0.076	0.245 ± 0.046	0.257 ± 0.047	9.645 ± 0.211	9.650 ± 0.190	0.027 ± 0.003	0.025 ± 0.002	2.500 ± 0.003	0.019 ± 0.001	0.053 ± 0.036	0.016 ± 0.001

3.2 Underground water and surface water comparison

The PAK-EPA acceptable limits and mean concentrations of HM in surface and groundwater are shown in Fig. 2. However, Pb, Ni, and Cr concentrations in surface water were higher than in underground water, and these elements' concentrations exceeded the permissible limits (0.015, 0.2, and 0.05 mg/L) established by Pak-EPA standards. Cd and Cu showed comparable mean concentrations (Fig. 2), but the Cd level was higher than the threshold level (0.005 mg/L) set by Pak-EPA in underground and surface water. Cu contents in the underground and surface water are lower than the acceptable level (1.5 mg/L) set by Pakistan-EPA guidelines. The concentration of Fe in subsurface water was higher than in surface water (Figure 2). There were some in underground water because the concentration of Fe in underground water was higher than the threshold levels (0.2 mg/L) established by Pak-EPA standards.

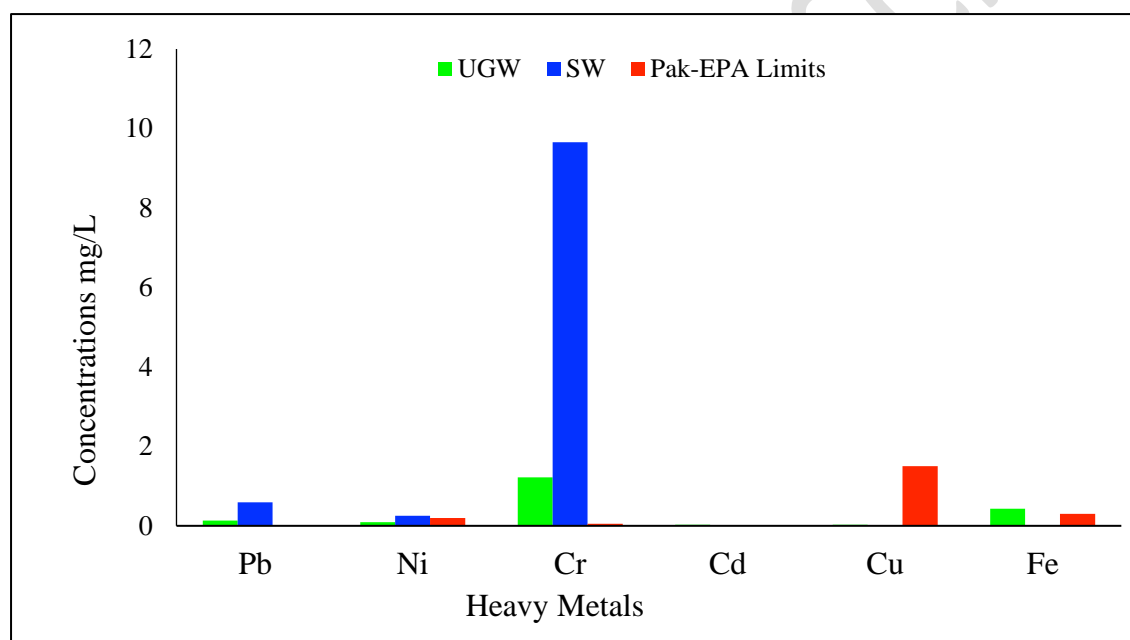


Figure 2. HMs in UGW and SW, along with Pak-EPA permissible limits.

3.3 Spatial comparison of heavy metals

The range of average lead levels was 0.593 ± 0.040 mg/L to 0.136 ± 0.064 mg/L. The area with the highest Pb level (0.593 ± 0.040 mg/L) was in surface water from Gari Pana Chowk, and the lowest (0.136 ± 0.064 mg/L) was in SW from Ghumavan. The Pb concentrations SW collected from Dhodiyal and Chunakari and UGW collected from Township, Ilyasi Masjid Road, Lakhpati Chowk, and Orish Colony were 0.541 ± 0.024 , 0.523 ± 0.045 , 0.459 ± 0.062 , 0.447 ± 0.034 , 0.378 ± 0.010 , and 0.371 ± 0.069 mg/L, respectively. Many samples from Gari Pana Chowk had lead concentrations higher than the acceptable limits (0.05 mg/L). The

adverse health effects of lead exposure above this threshold include anemia, high blood pressure, and kidney damage, to name just a few (Shaheen et al. 2016). However, according to Mostafa et al. (2024), adults are at risk for cardiovascular disease, particularly from lead exposure, which can cause joint and muscle pain.

Nickel concentrations ranged between 0.332 ± 0.037 and 0.093 ± 0.013 mg/L. The concentration was the highest in Chunakari (0.332 ± 0.37 mg/L) and lowest in Stadium Road (0.093 ± 0.013 mg/L). SW collected from Gari Pana Chowk had Ni level (0.257 ± 0.047 mg/L), followed by UGW from Chunakari, Dhodiyal, and Township (0.253 ± 0.010 , 0.236 ± 0.068 and 0.225 ± 0.054 mg/L), respectively. Many samples taken from Chunakari had Ni concentrations higher than the permitted standard (0.02 mg/L). However, excessive Ni intake beyond the acceptable level (0.02 mg/L) might aggravate health issues such as nausea, vertigo, asthma, and heart disease. High concentrations of Ni have a wide range of effects on animals, including teratogenicity and carcinogenicity (Jyothi et al. 2020). According to Mostafa et al. (2024), women are more likely than men to have a nickel allergies.

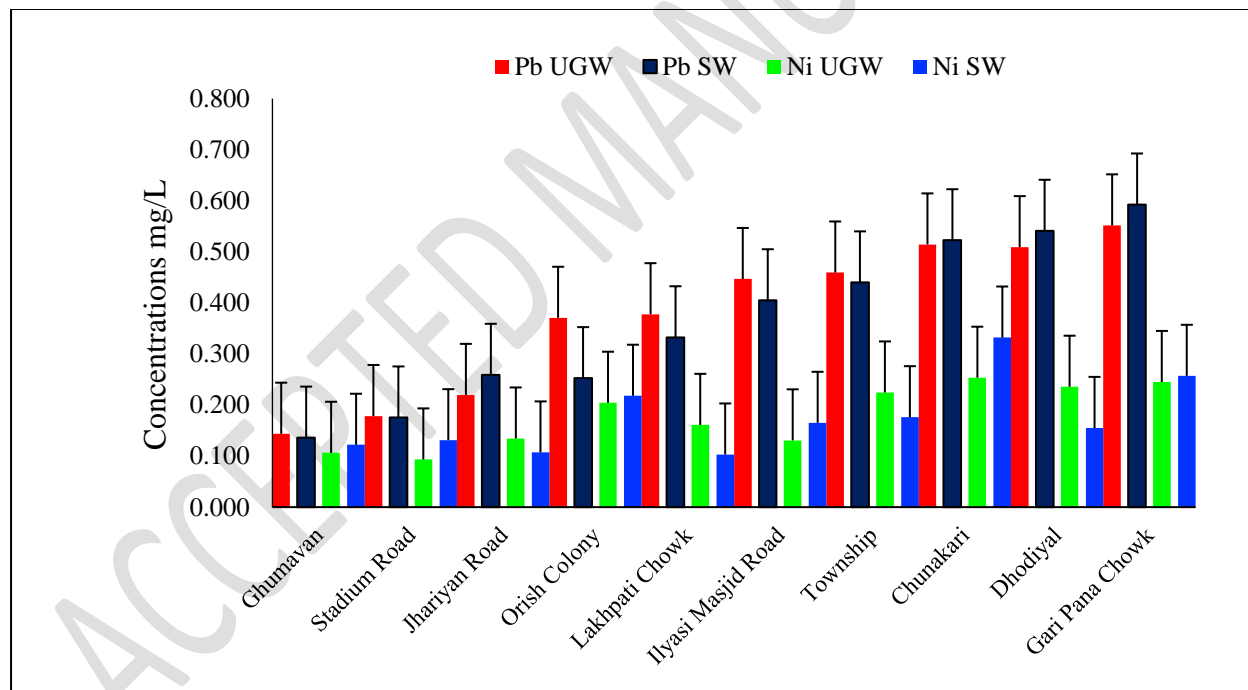


Figure 3. Average Concentrations of Pb and Ni in Water Samples

The Cr concentrations were lowest in SW and UGW Ghumavan (1.218 ± 1.338 mg/L and 2.106 ± 1.232 mg/L, respectively) and at their greatest in SW and UGW in Gari Pana Chowk (9.650 ± 0.190 mg/L and 9.450 ± 0.180 mg/L, respectively).

Most samples taken from Gari Pana Chowk had Cr concentrations higher than the allowed level of 0.05 mg/L (EPA). According to Pokhrel et al. (2022), levels of Cr over 0.05 mg/L can lead to cancer, respiratory issues, allergic and asthmatic symptoms, and skin hypersensitivity.

Concentrations of Cr over safe limits have been associated with gastrointestinal problems, lung cancer, and mortality in both children and adults (Georgaki et al. 2023) at values ranging from 4.1 to 357 mg/kg body weight.

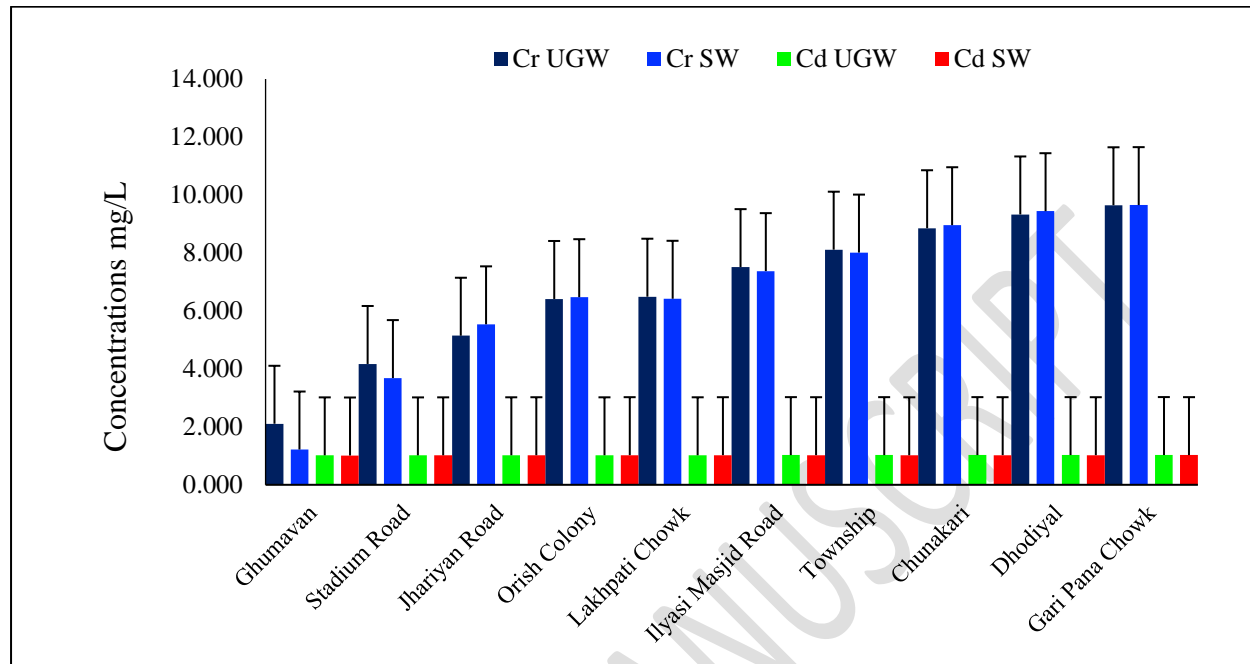


Figure 4. Average Concentrations of Cr and Cd in Different Water Samples

The average Cd concentrations were from 0.027 ± 0.003 mg/L to 0.012 ± 0.001 mg/L. Cadmium levels were highest in Gari Pana Chowk (0.027 ± 0.003 mg/L) and least in Ghumavan (0.0012 ± 0.001 mg/L) followed by UGW collected from Township, Ilyasi Masjid Road, Chunakari, and Dhodiyal (0.025 ± 0.005 mg/L), SW collected from Lakhpati Chowk, Orish Colony, Jhariyan Road and Stadium Road (0.023 ± 0.001 , 0.021 ± 0.000 and 0.018 ± 0.001 mg/L) respectively. Most samples collected from Gari Pana Chowk contained the most Cd. This indicates that the metal content is not within acceptable limits. However, above the recommended limit (0.005 mg/L), Cd can cause alveolar tumors, lead to decreased fertility and premature birth, and cause flu-like symptoms (chills, fever, and myalgia) and lung damage (Henson et al. 2013). There is some evidence that cadmium can cause cancer when inhaled, but there is less proof that it can do so when consumed (Godt et al. 2006).

The average copper concentrations ranged between (2.500 ± 0.003 mg/L) to (0.100 ± 0.009 mg/L). Mean copper concentrations were highest in Gari Pana Chowk (2.50 ± 0.003 mg/L) and lowest in Jhariyan Road (0.100 ± 0.009 mg/L) Followed by SW collected from Dhodiyal (1.900 ± 0.001 mg/L), UGW collected from Chunakari (1.400 ± 0.003 mg/), SW collected from Township, Ilyasi Masjid Road and Stadium Road (1.300 ± 0.006 , 1.100 and 0.900 ± 0.001

mg/L), UGW collected from Ghumavan, Orish Colony and Lakhpati Chowk (0.600 ± 0.003 , 0.500 ± 0.002 and 0.500 ± 0.004) respectively. Most of the samples collected from Gari Pana Chowk contained the highest amount of Cu. This indicates that the metal content is not within acceptable limits. Cu (1.5 mg/L) above the permissible limit can cause nasal, eye, and mouth sensitivities, stomach upset, and diarrhea. Children under 1 year are more sensitive to copper Duff, (2002). Chronically consuming large amounts of copper can harm the liver. Signs of the digestive system (eg, abdominal pain, cramps, nausea, diarrhea, vomiting (Araya et al. 2003).

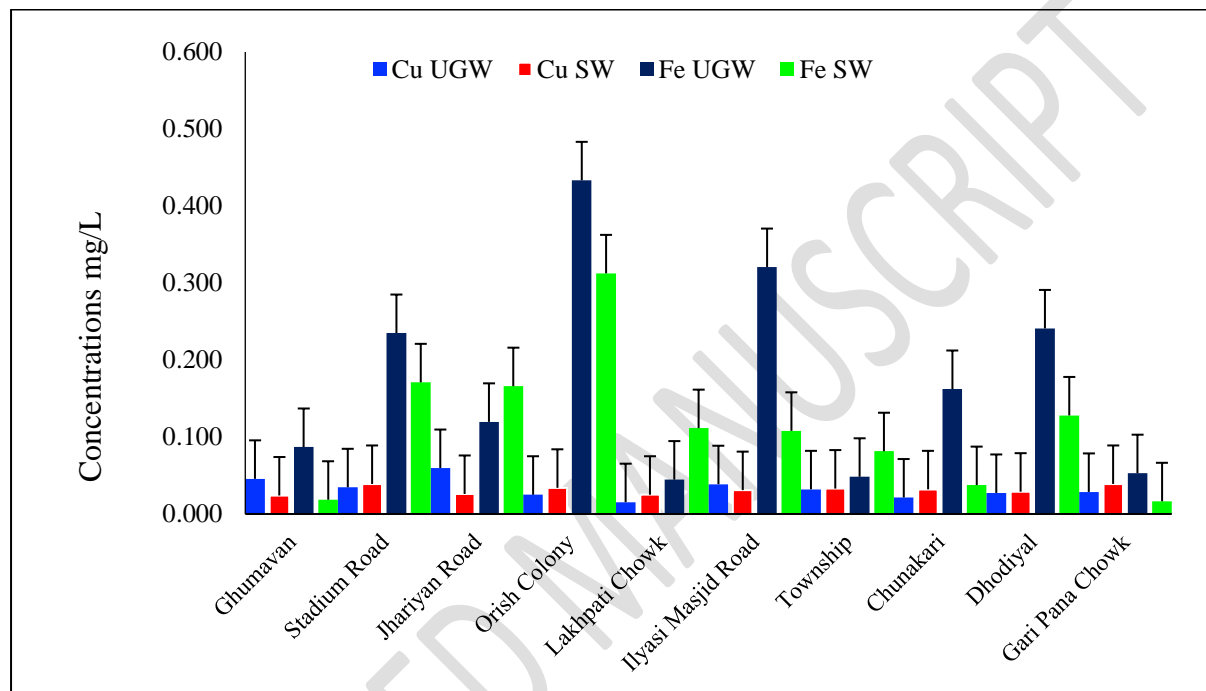


Figure 5. Average Concentrations of Cu and Fe in Different Water Samples

The average iron concentration ranged between ($0.433 \pm 0.080 \text{ mg/L}$) to ($0.016 \pm 0.001 \text{ mg/L}$). Mean iron concentrations were highest in Orish Colony ($0.433 \pm 0.080 \text{ mg/L}$) and lowest in Gari Pana Chowk ($0.016 \pm 0.001 \text{ mg/L}$) followed by UGW collected from Ilyasi Masjid Road, Dhodiyal, and stadium Road (0.321 ± 0.383 , 0.241 ± 0.220 and $0.235 \pm 0.082 \text{ mg/L}$), SW collected from Jhariyan Road ($0.166 \pm 0.058 \text{ mg/L}$), UGW collected from Chunakari ($0.162 \pm 0.142 \text{ mg/L}$), SW collected from Jhariyan Road ($0.112 \pm 0.108 \text{ mg/L}$), UGW collected from Ghumavan ($0.087 \pm 0.121 \text{ mg/L}$) and SW collected from Township ($0.082 \pm 0.036 \text{ mg/L}$) respectively. Most samples collected from the Orish Colony contained mostly Fe. The permissible lead level in drinking water is 0.3 mg/L (EPA). This indicates that the metal content is not within acceptable limits. Excess intake of the recommended daily intake (0.3 mg/L) of Fe may cause liver disease (cirrhosis, malignant tumor), cardiovascular disease, diabetes,

depression, osteoporosis, infertility, hypothyroidism, and intestinal pain, it may increase the risk of hypogonadism, premature death (Tagliabue et al. 2014).

3.4 Health risk assessment

Risk calculation is one of the most effective ways to investigate the probable hazards of heavy metal contact on human well-being, offering important evidence to communal health policymakers for protecting user health. According to the USEPA, exposure to heavy metals in drinking water, including Cd, Pb, Ni, Cr, Cu, and Fe, can lead to cancerous and non-cancerous menace to human health. The water distribution network can become contaminated with heavy metals due to various exposure routes, which can increase human health risks. Residents primarily use surface and groundwater. Adults and children are separated because of their behavioral and physiological differences.

3.5 Noncancerous analysis

Noncancerous assessment involves identifying health effects caused by exposure to toxic substances in a polluted environment. Humans are exposed to toxic elements via ingestion, inhalation, and dermal contact (Emmanuel et al. 2022). The heavy metal toxicity level to human health is proportional to the CDI.

3.6 Consumer daily intake (CDI)

The calculated CDI values for drinking water consumption are summarized in Table 2. The highest CDI for Pb in children was measured at 0.038 mg/L in Gari Pana Chowk, and the lowest CDI for adults was 0.004 mg/L in Ghumavan (Figure 6a). Therefore, heavy metals CDI values in the study area were in the order of Cr > Cu > Pb > Fe > Ni > Cd. The CDI of Cr was higher than the permissible limit in many locations for adults and children. The high pollution level in the consumable water is the cause of the highest CDI values for Cr. Acute pollution from the town and effluent in the vicinity may cause higher CDI of Cr in water (Khan et al. 2015). The CDI for Cr in adults and children was higher than in a previous study (Hussain et al. 2019).

3.7 Hazard quotient

The HM hazard quotient (HQ) indices in HM are summarized in Figure 6 b. All heavy metals studied had total HQ levels above 1, except for Ni and Fe in adults and children at each location. The mean HRI of all the samples collected from Nawansher Town, Abbottabad, indicated that

the non-carcinogenic health hazards associated with Pb, Ni, Cr, Cu, and Fe are acceptable. From the HQ results, it can be deduced that the contribution of the metals to the non-carcinogenic health risk was in the order of Cr > Pb > Cu > Cd > Ni > Fe.

ACCEPTED MANUSCRIPT

Table 2. Consumer daily intake (CDI) for adults and children in Water

<i>Sampling Sites</i>	Concentration mg/L/day											
	Pb		Ni		Cr		Cd		Cu		Fe	
	Adults	Children	Adults	Children	Adults	Children	Adults	Children	Adults	Children	Adults	Children
Ghumavan	0.004	0.009	0.003	0.008	0.047	0.111	0.000	0.001	0.055	0.129	0.002	0.004
Stadium Road	0.005	0.012	0.003	0.007	0.112	0.262	0.000	0.001	0.065	0.152	0.006	0.014
Jhariyan Road	0.007	0.016	0.003	0.008	0.153	0.356	0.001	0.001	0.077	0.180	0.004	0.010
Orish Colony	0.009	0.021	0.006	0.014	0.184	0.430	0.001	0.001	0.080	0.186	0.011	0.025
Lakhpati Chowk	0.010	0.024	0.004	0.009	0.184	0.430	0.001	0.001	0.079	0.185	0.002	0.005
Ilyasi Masjid Road	0.012	0.028	0.004	0.010	0.213	0.496	0.001	0.002	0.090	0.210	0.006	0.014
Township	0.013	0.030	0.006	0.013	0.230	0.537	0.001	0.001	0.084	0.196	0.002	0.004
Chunakari	0.015	0.035	0.008	0.020	0.254	0.594	0.001	0.002	0.092	0.214	0.003	0.007
Dhodial	0.015	0.035	0.006	0.013	0.268	0.626	0.001	0.002	0.090	0.211	0.005	0.012
Gari Pana Chowk	0.016	0.038	0.007	0.017	0.276	0.643	0.001	0.002	0.098	0.228	0.001	0.002

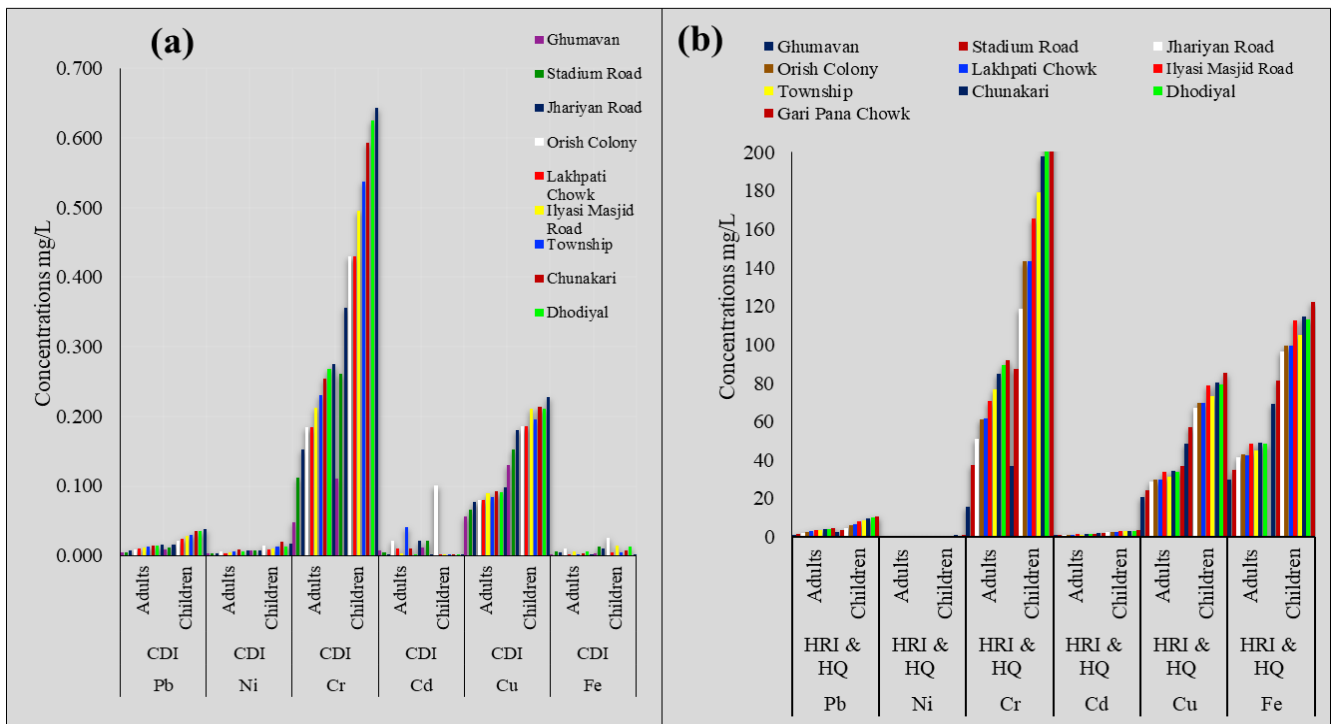


Figure 6 (a). CDI for all heavy metals in adults and children **(b).** HQ for all heavy metals in adults and children.

3.8 Hazard Index (HI)

The study area has a health index (HI) related to drinking water consumption, as shown in Fig. 7. The HI values for children and adults at each location ranged between 19.356 mg/L and 235.255 mg/L. Children with Gari Pana Chok had the highest HI values (235.255 mg/L), while adults with Ghumavan had the lowest HI values (19.356 mg/L). The HI values for children and adults were greater than 1. The ingestion of metals in water could pose a health risk to consumers. The HI value for all metals at each site is higher than 1, which indicates a non-carcinogenic health effect. The above-average HI values obtained in our study suggest a significant risk of non-carcinogenic health effects at each site. can occur. The concentrations can increase with time until anthropogenic sources are removed.

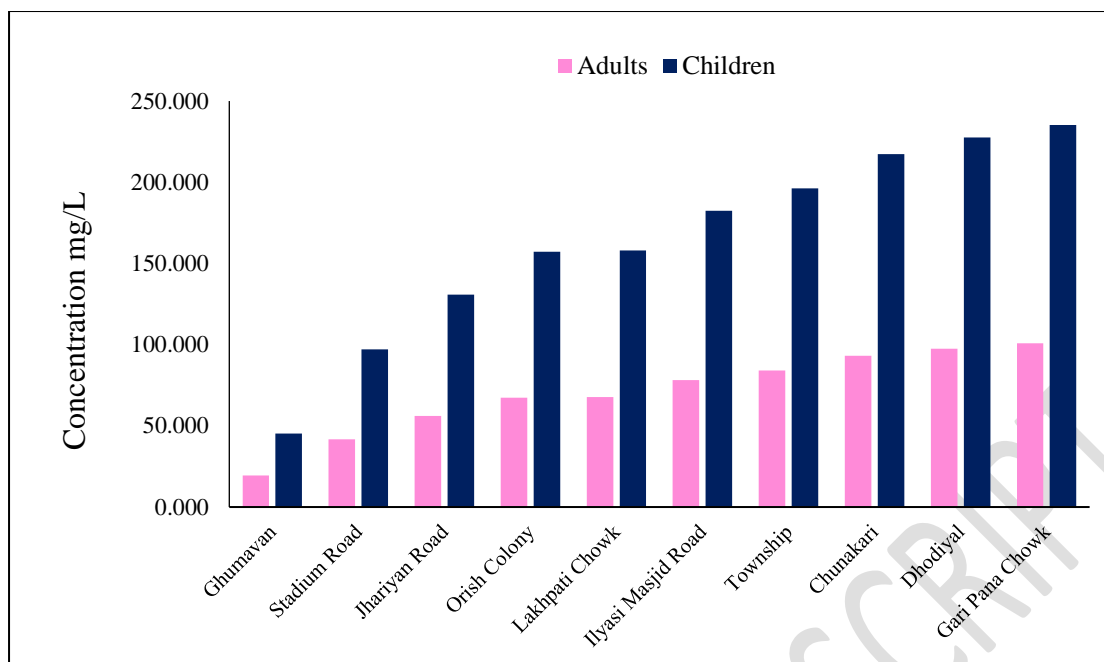


Figure 7. Concentrations of HIs for All Metals in Adults and Children.

3.9 Cancer-causing Risk Assessment

Cancer-causing hazards are characterized by a term called targeted cancer risk. When an individual is exposed to low amounts of toxic metals, it has a higher chance of cancer. The carcinogenic risk assessment for adults is given in Figure 8.

3.10 Target cancer risk (TCR)

The target cancer risk for adults and kids is determined in addition to the contribution of each toxic metal in water. Since the EPA does not list Ni and Fe as carcinogens, we have used Pb, Ni, Cr, and Cd as the basis for carcinogenic risk calculations. The highest TCR values were found in Garipana Chowk adults (32.891 mg/L), and the lowest TCR values (7.914 mg/L) were found in Stadium Road children. The highest TCR values were found in adults with Garipana Chowk (61.71 mg/L), and the lowest TCR values were found in children with Ghumavan (5.725 mg/L). Adults are at a higher risk of developing cancer than children in the study areas because adult cancer risks were higher everywhere for all metals. According to the target carcinogenic risks (TCRs) calculated in this investigation, all metals fall below acceptable ranges. It is believed that prolonged exposure to metals (more than 70 years) increases the risk of developing cancer.

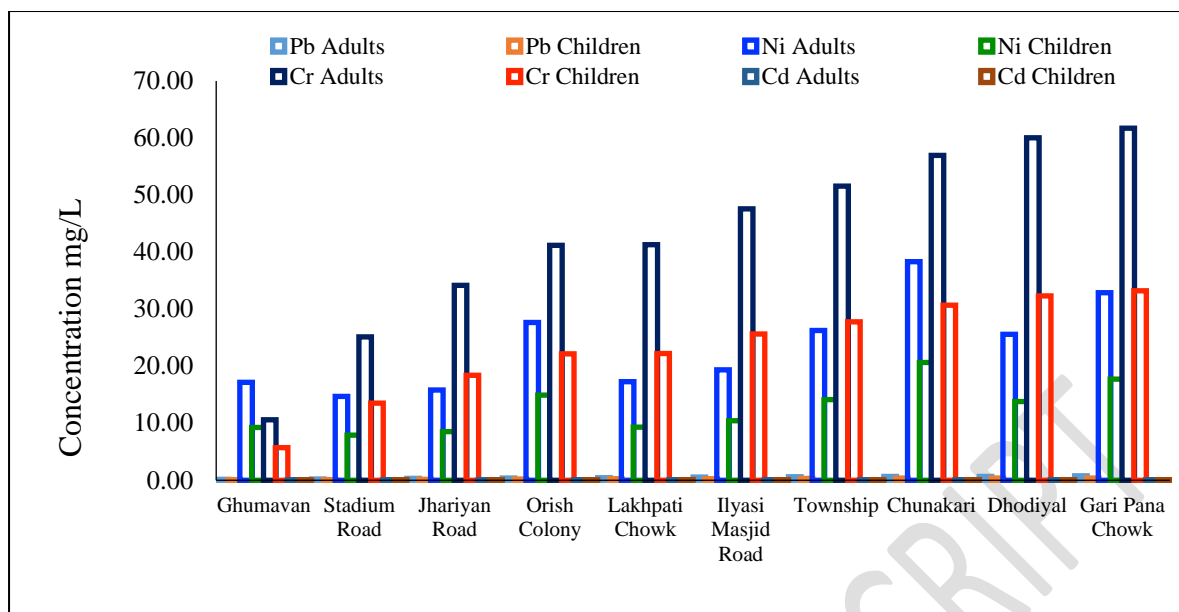


Figure 8. TCR for All Metals in Adults and Children

Conclusion

The current study aimed to quantify the heavy metals and assess health risks predominantly associated with HM concentration in ten locations in Nawanshahr Town, Abbottabad. Six metals, including Pb, Ni, Cr, Cd, Cu, and Fe, were quantified in 100 surface and groundwater samples collected from different locations in Nawanshahr, Abbottabad. The metal levels in the drinking water exceed the permitted limit specified by the Pak-EPA standards, except for Fe concentrations in UGW obtained from Orish Colony and Ilyasi Masjid Road. The high metal concentrations were suggestive of anthropogenic activity.

A human health risk assessment was undertaken where CDI and values for all metals in both adults and children were found to be > 1 at all places, indicating that the population was not within safe limits except for Ni < 1 , which signifies that the population was within safe limits ($HQ < 1$). The HI values greater than one for all metals at each site imply harmful non-carcinogenic health effects. The TCR for all metals was higher in adults in all regions, indicating that adults are more likely to develop cancer. The study's findings call for extensive, continuous annual monitoring and more studies on harmful metals quantification to assess long-term consequences and protect both men and the environment.

Acknowledgements

The authors express their gratitude to the Deanship of Scientific Research, Vice Presidency for Graduate Studies and Scientific Research, King Faisal University, Saudi Arabia, for supporting this work through grant number KFU242728.

Conflict of interest

Authors don't have any conflict of interest.

References

Nawaz, H., Hussain, N., Yasmeen, A., Arif, M., Hussain, M., Rehmani, M. I. A., ... Ahmad, A. (2015). Soil-applied zinc ensures high production and net returns of divergent wheat cultivars. *Journal of Environmental and Agricultural Sciences*, 2(1), 1-7.

Charlesworth, S., De Miguel, E., Ordóñez, A. (2011). A review of the distribution of particulate trace elements in urban terrestrial environments and its application to considerations of risk. *Environmental geochemistry and health*, 33, 103-123. doi: 10.1007/s10653-010-9325-7.

Jyothi, N. R., Farook, N. A. M. (2020). Mercury toxicity in public health. *Heavy Metal Toxicity in Public Health*, 1-12. doi: 10.1016/j.chemosphere.2016.02.060.

Shaheen, N., Irfan, N. M., Khan, I. N., Islam, S., Islam, M. S., Ahmed, M. K. (2016). Presence of heavy metals in fruits and vegetables: Health risk implications in Bangladesh. *Chemosphere*, 152, 431-438. doi: 10.7324/japs.2012.2727.

Gaur Sandeep, G. S., Agrawal Sangita, A. S., Kumar, S. S., Goyal Rakhi, G. R., Kumar Dinesh, K. D. (2012). Biological effect of heavy metal in drinking water samples of Western Uttar Pradesh region in India. *Journal of Applied Pharmaceutical Science*, doi: 10.7324/japs.2012.2727.

Duff, P. A. (2002). The discursive co-construction of knowledge, identity, and difference: An ethnography of communication in the high school mainstream. *Applied linguistics*, 23(3), 289-322. doi: 10.3390/ijerph17228518.

Ahmed, T., Zounemat-Kermani, M., Scholz, M. (2020). Climate change, water quality and water-related challenges: a review with focus on Pakistan. *International journal of environmental research and public health*, 17(22), 8518. doi: 10.1155/2019/6730305.

Ali, H., Khan, E., Ilahi, I. (2019). Environmental chemistry and ecotoxicology of hazardous heavy metals: environmental persistence, toxicity, and bioaccumulation. *Journal of chemistry*, 2019(1), 6730305.

Kamboj, N., Aswal, R. S., Singh, P. (2017). Occurrence of heavy metals in Ganga canal water at Haridwar (Uttarakhand), India: A case study. *Archives of Agriculture and Environmental Science*, 2(2), 119-123. doi: 10.1111/1541-4337.12068.

Hajeb, P., Sloth, J. J., Shakibazadeh, S. H., Mahyudin, N. A., Afsah-Hejri, L. (2014). Toxic elements in food: occurrence, binding, and reduction approaches. *Comprehensive Reviews in Food Science and Food Safety*, 13(4), 457-472. doi: 10.1155/2015/973878.

Dghaim, R., Al Khatib, S., Rasool, H., Ali Khan, M. (2015). Determination of heavy metals concentration in traditional herbs commonly consumed in the United Arab Emirates. *Journal of environmental and public health*, 2015(1), 973878. doi: 10.1155/2017/7908183.

Daud, M. K., Nafees, M., Ali, S., Rizwan, M., Bajwa, R. A., Shakoore, M. B., ... Zhu, S. J. (2017). Drinking water quality status and contamination in Pakistan. *BioMed research international*, 2017(1), 7908183. doi: 10.1155/2017/7908183.

Ahmed, S. F., Kumar, P. S., Rozbu, M. R., Chowdhury, A. T., Nuzhat, S., Rafa, N., ... Mofijur, M. (2022). Heavy metal toxicity, sources, and remediation techniques for contaminated water and soil. *Environmental Technology & Innovation*, 25, 102114. doi: 10.1016/j.eti.2021.102114.

Haque, F., Chiang, Y. W., Santos, R. M. (2020). Risk assessment of Ni, Cr, and Si release from alkaline minerals during enhanced weathering. *Open Agriculture*, 5(1), 166-175. doi: 10.1515/opag-2020-0016.

Henson, T. M., Cory, W., Rutter, M. T. (2013). Extensive variation in cadmium tolerance and accumulation among populations of *Chamaecrista fasciculata*. *PloS one*, 8(5), e63200. doi: 10.1371/journal.pone.0063200.

Tagliabue, A., Aumont, O., Bopp, L. (2014). The impact of different external sources of iron on the global carbon cycle. *Geophysical Research Letters*, 41(3), 920-926. doi: 10.1002/2013gl059059.

Raza, M., Hussain, F., Lee, J. Y., Shakoor, M. B., Kwon, K. D. (2017). Groundwater status in Pakistan: A review of contamination, health risks, and potential needs. *Critical Reviews in Environmental Science and Technology*, 47(18), 1713-1762, doi: 10.1080/10643389.2017.1400852.

Ullah, S., Tahir, A. A., Akbar, T. A., Hassan, Q. K., Dewan, A., Khan, A. J., Khan, M. (2019). Remote sensing-based quantification of the relationships between land use land cover changes and surface temperature over the Lower Himalayan Region. *Sustainability*, 11(19), 5492, doi: 10.3390/su11195492.

Parveen, S., Bharose, R., Singh, D. (2017). Assessment of physico-chemical properties of tannery waste water and its impact on fresh water quality. *International Journal of Current Microbiology and Applied Sciences*, 6(4), 1879-1887, doi: 10.20546/ijcmas.2017.604.224.

Parvin, F., Hassan, M. A., Tareq, S. M. (2022). Risk assessment of microplastic pollution in urban lakes and peripheral Rivers of Dhaka, Bangladesh. *Journal of Hazardous Materials Advances*, 8, 100187, doi: 10.1016/j.hazadv.2022.100187.

Abeer, N., Khan, S. A., Muhammad, S., Rasool, A., Ahmad, I. (2020). Health risk assessment and provenance of arsenic and heavy metal in drinking water in Islamabad, Pakistan. *Environmental technology & innovation*, 20, 101171, doi: 10.1016/j.eti.2020.101171.

Muhammad, S., Shah, M. T., Khan, S. (2011). Health risk assessment of heavy metals and their source apportionment in drinking water of Kohistan region, northern Pakistan. *Microchemical journal*, 98(2), 334-343, doi: 10.1016/j.microc.2011.03.003.

Momodu, M. A., Anyakora, C. A. (2010). Heavy metal contamination of ground water: The Surulere case study. *Res J Environ Earth Sci*, 2(1), 39-43.

Tong, Z., Chen, Y., Malkawi, A., Adamkiewicz, G., Spengler, J. D. (2016). Quantifying the impact of traffic-related air pollution on the indoor air quality of a naturally ventilated building. *Environment international*, 89, 138-146, doi: 10.1016/j.envint.2016.01.016.

Muhammad, S., Shah, M. T., Khan, S. (2011). Health risk assessment of heavy metals and their source apportionment in drinking water of Kohistan region, northern Pakistan. *Microchemical journal*, 98(2), 334-343, doi: 10.1016/j.microc.2011.03.003.

Raza, M., Hussain, F., Lee, J. Y., Shakoor, M. B., Kwon, K. D. (2017). Groundwater status in Pakistan: A review of contamination, health risks, and potential needs. *Critical Reviews in Environmental Science and Technology*, 47(18), 1713-1762, doi: 10.1080/10643389.2017.1400852.

Shaheen, N., Irfan, N. M., Khan, I. N., Islam, S., Islam, M. S., Ahmed, M. K. (2016). Presence of heavy metals in fruits and vegetables: Health risk implications in Bangladesh. *Chemosphere*, 152, 431-438. doi: 10.1016/j.chemosphere.2016.02.060.

Mostafa, M. A., Abueissa, M. A., Soliman, M. Z., Ahmad, M. I., Soliman, E. Z. (2024). Association between Blood Lead Levels and Silent Myocardial Infarction in the General Population. *Journal of Clinical Medicine*, 13(6), 1582., doi: 10.3390/jcm13061582.

Pokhrel, G. R., Pokhre, G. (2022). The effect of chromium on human-health: a review. *BMC Journal of Scientific Research*, 5(1), 27-35, doi: 10.3126/bmcjsr.v5i1.50669.

Georgaki, M. N., Charalambous, M., Kazakis, N., Talias, M. A., Georgakis, C., Papamitsou, T., Mytigliaki, C. (2023). Chromium in water and carcinogenic human health risk. *Environments*, 10(2), 33, doi: 10.3390/environments10020033.

Henson, T. M., Cory, W., Rutter, M. T. (2013). Extensive variation in cadmium tolerance and accumulation among populations of *Chamaecrista fasciculata*. *PloS one*, 8(5), e63200., doi: 10.1371/journal.pone.0063200.

Godt, J., Scheidig, F., Grosse-Siestrup, C., Esche, V., Brandenburg, P., Reich, A., Groneberg, D. A. (2006). The toxicity of cadmium and resulting hazards for human health. *Journal of occupational medicine and toxicology*, 1, 1-6., doi: 10.1186/1745-6673-1-22.

Araya, M., Olivares, M., Pizarro, F., González, M., Speisky, H., Uauy, R. (2003). Gastrointestinal symptoms and blood indicators of copper load in apparently healthy adults undergoing controlled copper exposure. *The American journal of clinical nutrition*, 77(3), 646-650., doi: 10.1093/ajcn/77.3.646.

Emmanuel, U. C., Chukwudi, M. I., Monday, S. S., Anthony, A. I. (2022). Human health risk assessment of heavy metals in drinking water sources in three senatorial districts of Anambra State, Nigeria. *Toxicology reports*, 9, 869-875., doi: 10.1016/j.toxrep.2022.04.011.

Khan, S., Shah, I. A., Muhammad, S., Malik, R. N., Shah, M. T. (2015). Arsenic and heavy metal concentrations in drinking water in Pakistan and risk assessment: a case study. *Human and Ecological Risk Assessment: An International Journal*, 21(4), 1020-1031, doi: 10.1080/10807039.2014.950925.

Hussain, S., Habib-Ur-Rehman, M., Khanam, T., Sheer, A., Kebin, Z., Jianjun, Y. (2019). Health risk assessment of different heavy metals dissolved in drinking water. *International journal of environmental research and public health*, 16(10), 1737, doi 10.3390/ijerph16101737.