

**Screening, Identification, and Optimization of Sulfur-Oxidizing Bacteria from Post-coal
Mining Ponds of Different Ages in Samarinda, East Kalimantan, Indonesia**

Eko Kusumawati^{1,2}, Catur Retnaningdyah³, Irfan Mustafa³, Suharjono³

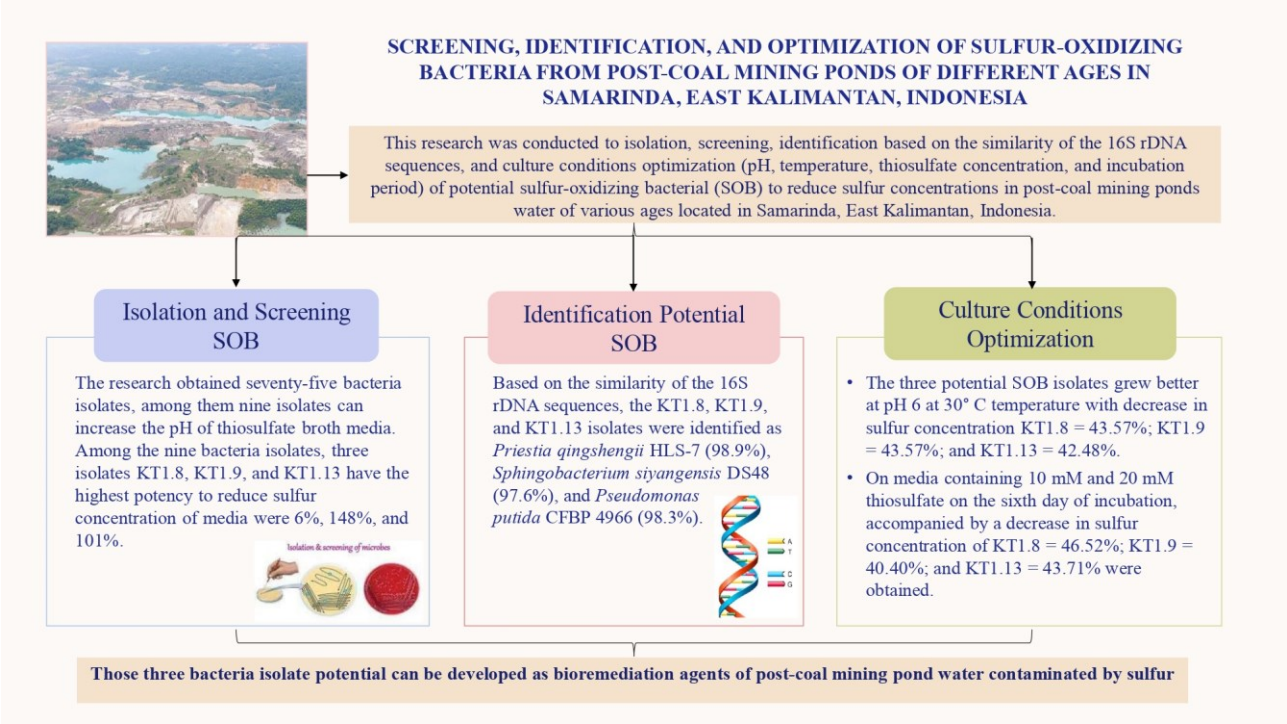
¹Doctoral Program Study, Department of Biology, Faculty of Mathematics and Natural Sciences,
Brawijaya University, Jl. Veteran, Malang 65145, East Java, Indonesia.

²Department of Biology, Faculty of Mathematics and Natural Sciences, Mulawarman University, Jl.
Barong Tongkok, Samarinda 75123, East Kalimantan, Indonesia.

³Department of Biology, Faculty of Mathematics and Natural Sciences, Brawijaya University, Jl.
Veteran, Malang 65145, East Java, Indonesia.

*Corresponding author:

E-mail: eko.kusumawati11@gmail.com, tel: +62-81393811793



15

16

17 **ABSTRACT**

18 This research was conducted to isolation, screening, identification, and culture conditions
19 optimization (pH, temperature, thiosulfate concentration, and incubation period) of potential sulfur-
20 oxidizing bacterial (SOB) to reduce sulfur concentrations in post-coal mining ponds water of various
21 ages located in Samarinda, East Kalimantan, Indonesia. The ponds used in this study were ponds ≤ 5
22 years old and ≥ 20 years old. The research obtained seventy-five bacteria isolates, among them nine
23 isolates can increase the pH of thiosulfate broth media. Among the nine bacteria isolates, three isolates
24 KT1.8, KT1.9, and KT1.13 have the highest potency to reduce sulfur concentration of media were
25 6%, 148%, and 101%. Based on the similarity of the 16S rDNA sequences, the KT1.8, KT1.9, and
26 KT1.13 isolates were identified as *Priestia qingshengii* HLS-7 (98.9%), *Sphingobacterium*
27 *siyangensis* DS48 (97.6%), and *Pseudomonas putida* CFBP 4966 (98.3%). The three potential SOB
28 isolates grew better at pH 6 at 30° C temperature with the growth of KT1.8 = 146×10^{14} cell/mL;
29 KT1.9 = 81×10^7 cell/mL; and KT1.13 = 33×10^7 cell/mL; decrease in sulfur concentration KT1.8 =
30 43.57%; KT1.9 = 43.57%; and KT1.13 = 42.48%. On media containing 10 mM and 20 mM

thiosulfate on the sixth day of incubation, cell density isolates KT1.8 = 98×10^{12} cell/mL; KT1.9 = 25×10^7 cell/mL; and KT1.13 = 85×10^6 cell/mL; accompanied by a decrease in sulfur concentration of KT1.8 = 46.52%; KT1.9 = 40.40%; and KT1.13 = 43.71% were obtained. Those three bacteria isolate potential can be developed as bioremediation agents of post-coal mining pond water contaminated by sulfur.

Keywords: bioremediation, coal mining, pond water, sulfur-oxidizing bacteria

1. Introduction

The most mining methods with open pit mining are dominates mining activities in the world, causing the formation of large openings which are then filled with water (Koščová et al., 2018; Tuheteru et al., 2021). In companies that have a mining permit, these dug holes are backfilled with soil taken from the surrounding land or from the previous land cover (Ardiansyah & Fajri, 2016; Zhang et al., 2019). The problem with this open pit mining system is usually that small mines do not carry out reclamation and backfilling (backfilling method) which causes ex-mining holes. Ex-mining pits or also called voids left behind in post-mining without proper utilization planning have the potential to cause ecological damage to mining areas (Zhang et al., 2019; Absori et al., 2021). The post-coal mining area can experience changes due to the exposure of rock layers composed of naturally oxidized sulfur supported also by high rainfall which accelerates sulfur oxidation. Sulfur contained in post-coal mining pool water comes from coal material containing 2-11% sulfur. Sulfur in post-mining ponds also comes from the coal washing process. During washing, the elements present in the coal will dissolve or undergo several chemical reactions and physical reactions and cause the washing results to dissolve into the washing solution (Dutta et al., 2018). These post-coal mining open ponds remove vegetation cover, disrupt the ecological balance of the land surface, and reduce productivity and environmental quality.

Biological oxidation of inorganic sulfur compounds is an important process in the global sulfur cycle. In this process, the energy generated from sulfur oxidation is used by aerobic chemoautotrophs for carbon dioxide fixation, while the electrons derived from the reduced sulfur compounds are used by

anoxigenic photoautotrophs for carbon dioxide reduction (Luo et al., 2018). Sulfur-oxidation bacteria are the most active and ancient metabolic processes in sulfur cycle that operate in diverse ecosystems and considered as key phenomenon in sulfur biogeochemical cycling (González & Pérez, 2021; Kumar et al., 2018). Usually, on the basis of nutrition, SOB is categorized as lithoautotrophs. The SOB oxidize the reduced sulfur compounds such as hydrogen sulfide (H_2S), elemental sulfur (S^0), sulfite (SO_3^{2-}), thiosulfate ($\text{S}_2\text{O}_3^{2-}$), and various polythionates ($\text{S}_n\text{O}_6^{2-}$ or $-\text{S}_n\text{O}_6-$) into sulfate (SO_4^{2-}) (Kumar et al., 2018). Sulfur oxidizing bacteria (SOB) control the main processes of organic matter degradation and the biogeochemical cycles of sulfur. Sulfur oxidizing bacteria enhances the rate of natural oxidation of Sulfur. In the metabolism of SOB, sulfur can be synthesis into amino acid are cysteine and methionine of the bacteria cell (Chen et al., 2023). Studying the community structure and diversity of SOB is important to reveal the role of these bacteria in the sulfur biogeochemical cycle (Konrad et al., 2023). However, the activity of these sulfur-oxidizing bacteria is influenced by environmental factors and the age of the post-coal mining pond that drive the sulfur cycle (Méndez-García et al., 2015; Zhang et al., 2017). The increase of the pond age caused increase the diversity of plankton, fish, and other aquatic organisms in natural stagnant waters. Post-mining ponds generally consist of young post-mining ponds were less than 5 years old and old post-mining were more than 20 years old (Prasetyono, 2015). Phylogenetic and potency assay of sulfur-oxidizing bacteria from water post-coal mining ponds of different ages in Samarinda, East Kalimantan, Indonesia has not been explored yet. This study will help us in understanding the characteristics of sulfur oxidizing bacteria in post-coal mining ponds water. Various sulfur oxidizing bacteria will isolate, evaluate of their potency to reduce of sulfur concentration, and it identify.

2. Materials and methods

2.1. Description of the location and sampling of post-coal mining pond water

The research was carried out in July-September 2022 from three locations of post-coal mining ponds with an age of ≤ 5 years and three locations of post-coal mining ponds with an age of ≥ 20 years in Samarinda City, East Kalimantan and at the Water Quality Laboratory of the Faculty of Fisheries and

Marine Sciences, Mulawarman University, Samarinda, Indonesia, and Animal Ecology and Diversity Laboratory, Faculty of Mathematics and Natural Sciences, Universitas Brawijaya, Malang, Indonesia. Details of the sampling locations were presented in Figure 1. Each water sample from the post-coal mining pond was taken in three replicates and each replicate was taken from five random points with a depth of 5 cm from the surface of pond water using a water sampler. Samples from each point were mixed in a container to obtain a composite sample. This procedure was repeated with samples from every three replicates and five different points. Water samples were transported in closed bottles and stored at 4°C to be brought to the Microbiology Laboratory, Faculty of Mathematics and Natural Sciences, Universitas Brawijaya to prepare for further analysis.

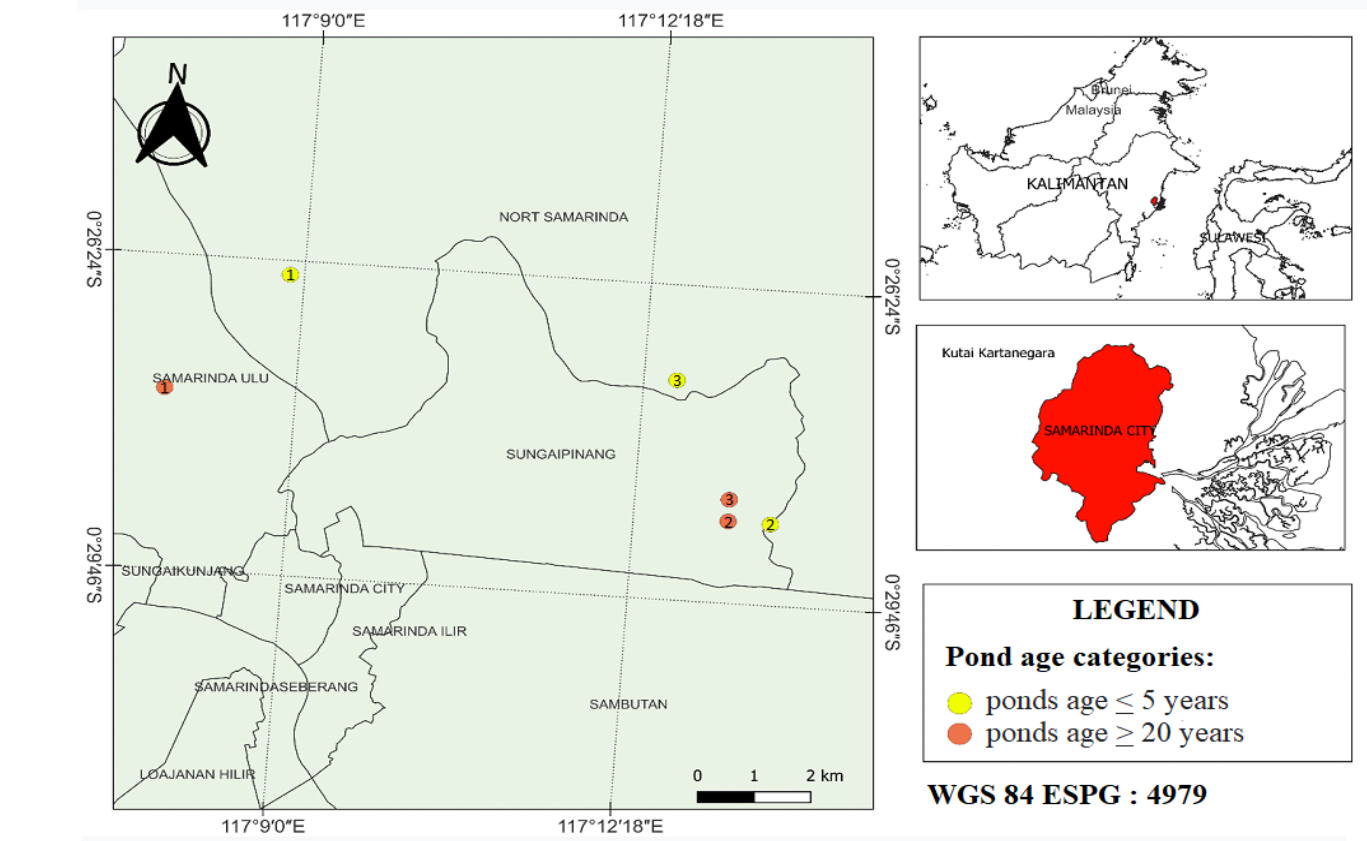


Figure 1. Details of the sampling locations

2.2. Culture media and growth conditions

Sulfur-oxidizing bacteria were isolated from post-coal mining pond water samples using the direct screening method (Pokorna & Zabranska, 2015; Yousef et al., 2019). The medium used to isolate of SOB was thiosulfate broth medium with the composition of 1 g NH₄Cl, 0.1 g CaCl₂.2H₂O, 10 g NaCl,

98 0.5 g KH_2PO_4 , 2 g K_2HPO_4 , 0.8 g $\text{MgSO}_4 \cdot 7\text{H}_2\text{O}$, 3 g $\text{Na}_2\text{S}_2\text{O}_3 \cdot 5\text{H}_2\text{O}$ (Mustafa et al., 2015), 2 mL of
99 0.5% phenol red as a color indicator for changes of pH (Hidayat et al., 2017; Reddy et al., 2018) and
100 dissolved in 1000 mL of distilled water. The pH of the media was adjusted with 1 M NaOH or HCl
101 until pH 7.3 (Mustafa et al., 2015). Sulfur oxidizing bacteria were incubated at 30°C for 7 days under
102 aerobic conditions (Mustafa et al., 2015).

103

104 2.3. Isolation of sulfur-oxidizing bacteria

105 Sulfur oxidizing bacteria were isolated by inoculating 25 mL of water sample into 225 mL of 0.85%
106 NaCl solution as a 10^{-1} dilution (Khotimah et al., 2020), continued until the 10^{-5} dilution. Sample
107 suspension 0.1 mL was inoculated by pour plate into thiosulfate agar media containing 1.5%
108 bacteriological agar and 2 mL of 0.5% phenol red. The culture incubated at 30°C for 7 days under
109 aerobic conditions (Mustafa et al., 2015). The SOB isolates were purified based on streak plate
110 method on thiosulphate agar medium. The pure cultures of SOB were preserved on thiosulphate agar
111 slants at 4° C.

112 2.4. Screening of SOB isolates base on pH increasing and decreasing of sulfur concentration

113 The pure culture of each SOB isolate as much as 10 mL (Malviya et al., 2022) at logarithmic growth
114 phase with 10^7 cell/mL density (Khotimah et al., 2020) was inoculated in the 90 mL thiosulfate broth
115 medium with initial pH 6.0. The culture of SOB was incubated at 30°C for 7 days. The final pH of
116 the growth media was measured using a pH meter. The isolates were screened based on their efficacy
117 to increase the pH of culture medium. The selected isolates were assayed based on the potency to
118 decrease sulfur concentration of the culture medium.

119 The experiment to assay of the SOB isolate to decreased of sulfur concentration in the medium was
120 carried out according Cha et al. (1999) and Hindersah et al. (2018). The SOB isolate at logarithmic
121 growth phase as much as 10 mL with 10^7 cell/mL density was inoculated in the 90 mL thiosulfate
122 broth medium. The cultures were incubated at 30°C for 7 days. The sulfur concentration at initial and
123 final incubation were measured. The culture suspension was centrifuged at 10.000 rpm for 5 min, the

124 supernatant was added by barium chloride (BaCl₂) (10% w/v) with 1:1 ratio. The suspension was
 125 shake and the absorbance was measured with spectrophotometer at 480 nm wavelength. The
 126 absorbance values were integrated in the sulfur standard curve to determined sulfur concentration of
 127 the SOB culture medium (Kolmert et al., 2000). The standard sulfur solution was made by dissolving
 128 potassium sulfate (K₂SO₄) in deionized water to obtained sulfur concentration 0 to 40 mM. The sulfur
 129 concentration data was variance analysis to determine the potential of SOB. The potential of SOB
 130 will identify molecularly based on 16S rDNA sequence similarity. The decreasing data of sulfur
 131 concentration (%) was calculated using the below formula.

$$132 \quad \text{Decreased sulfur concentration (\%)} = \frac{\text{initial sulfur concentration} - \text{final sulfur concentration}}{\text{initial sulfur concentration}} \times 100\%$$

133 *2.5. Bacteria identification base on 16S rDNA sequencing similarity*

134 The chromosomal DNA of SOB potential isolates was extracted by Zymo DNA Extraction Kit. The
 135 region of 16S rDNA was amplified using primers 27f 5'-GAGTTTGCTCCTGGCTCAG-3' and 1492r
 136 5'-GGTTACCTTGTTACGACTT-3' (Huber et al., 2016; Hassanshahian & Ghoebani, 2018; Nadella
 137 et al., 2019). The 16S rDNA was amplified in the 25 µL PCR mix witch consisted of 12.5 µL of 2X
 138 OneTaq Quick load PCR master mix (New England Biolabs, Germany), 0.5 µL (20 pmol) of each of
 139 the primers and 2 µL of DNA template and 9.5 µL of distilled water. The amplification of 16S rDNA
 140 was carried out in the PCR machine that programmed with 94° C (2 min) for initial denaturation,
 141 followed by 35 cycles consist of denaturation, annealing, and extension at 94° C (30 sec), 50° C (1
 142 min), and 68° C (90 sec) respectively, and final extension at 68° C (7 min). The 16S rDNA amplicons
 143 were analyzed by nanodrop spectrophotometer. The Amplicons of 16S rDNA were purified and
 144 sequenced at First Base, Malaysia. Amplicons were sequenced using an ABI 3130 Automatic
 145 Sequencer Analyzer. The 16S rDNA sequences were edited using the Sequencer Scanner V.1
 146 program and combined using CAP Contig Assembly in the BioEdit V.7.2.5 program. The 16S rDNA
 147 sequence was BLAST using the NCBI BLASTN program and the nucleotide sequence was
 148 determined based on GenBank (<http://www.ncbi.nlm.nih.gov>). The 16S rDNA sequences of the SOB
 149 and reference strains were aligned with the MEGA program's Clustal W Multiple Alignment.

Phylogenetic trees were constructed and inferred using the Neighbor Joining algorithm with a bootstrap of 1000 times (Alang et al., 2019; Rohmah et al., 2020).

2.6. Optimization of SOB culture conditions

The optimum growth of SOB isolate potential was determined in the thiosulfate broth medium. The experiment was carried out with three replications based on complete randomized design according to Hidayat et al. (2017). The potential of SOB isolate at logarithmic growth phase was 10 mL with 10^7 cell/mL density inoculated in the 90 mL thiosulfate broth medium pH 6, and it incubated 120 rpm at 30° C for 7 days. The culture suspension at 24 h incubation interval was measured cell density of SOB according to Khotimah et al. (2020) and sulfur concentration according to Cha et al. (1999) and Kolmert et al. (2000). The optical density of culture suspension was measured with a spectrophotometer at 600 nm (UV-1700-Shimadzu, Kyoto, Japan). The sulfur concentration was measured with a spectrophotometer at 480 nm. The culture media containing thiosulfate (3 mM) as electron donor was adjusted at various conditions:

1. Optimization of pH

The isolates were incubated in thiosulfate broth media with different pH at 3, 4, 5, 6, 7, 8 and a temperature at 30° C.

2. Temperature optimization

In the same way, the thiosulfate medium was adjusted to the optimal pH 6 at different temperatures at 25° C, 30° C and 35° C, respectively.

3. Optimization of thiosulfate concentration

In the same way, thiosulfate media with pH 6, temperature 30° C were treated with different concentrations of thiosulfate at 5 mM, 10 mM, 20 mM, and 40 mM.

4. Incubation period

Bacterial cultures were incubated at different time intervals of 0, 1, 2, 3, 4, 5, 6, and 7 days with the observed parameters being cell density and decreasing of sulfur concentration.

2.7. Statistical analysis

Statistical analysis was performed by One-way ANOVA was used for data analysis SPSS V. 16 software (SPSS Inc., Chicago, Illinois, USA). The means were compared using Tukey test to find the difference at 5% level of significance ($P < 0.05$).

3. Results and Discussion

3.1. Sulfur-oxidizing bacteria isolate from post-mining pond water in Samarinda

The current research was to obtained SOB isolate from post-coal mining pond water with ≤ 5 years and ≥ 20 years old. The research obtained 75 bacteria isolates that able to use thiosulfate for growth (Table 1). However, only 40 bacteria isolates were able to raise the pH of the media to become non-acidic, so only 40 SOB isolates were further tested.

Tabel 1. SOB isolates from post-coal mining pond water with ≤ 5 years and ≥ 20 years old

Isolates	Media Thiosulfat Mineral	Isolates	Media Thiosulfat Mineral	Isolates	Media Thiosulfat Mineral	Isolates	Media Thiosulfat Mineral	Isolates	Media Thiosulfat Mineral
KM2 1	-	KM3 8	-	KT2 1	+	KT3 2	+	KT3 17	+
KM2 2	-	KM3 9	-	KT2 2	+	KT3 3	-	KT3 18	+
KM2 3	-	KT1 1	-	KT2 3	+	KT3 4	+	KT3 19	-
KM2 4	-	KT1 2	+	KT2 4	+	KT3 5	+	KT3 20	+
KM2 5	-	KT1 3	-	KT2 5	+	KT3 6	+	KT3 21	+
KM2 6	-	KT1 4	-	KT2 6	+	KT3 7	+	KT3 22	+
KM2 7	-	KT1 5	-	KT2 7	+	KT3 8	+	KT3 23	-
KM2 8	-	KT1 6	-	KT2 8	-	KT3 9	+	KT3 24	+
KM3 1	-	KT1 7	+	KT2 9	-	KT3 10	+	KT3 25	-
KM3 2	-	KT1 8	+	KT2 10	-	KT3 11	+	KT3 26	+
KM3 3	-	KT1 9	+	KT2 11	+	KT3 12	+	KT3 27	+
KM3 4	-	KT1 10	+	KT2 12	-	KT3 13	+	KT3 28	+
KM3 5	-	KT1 11	+	KT2 13	-	KT3 14	+	KT3 29	+
KM3 6	-	KT1 12	-	KT2 14	-	KT3 15	-	KT3 30	+
KM3 7	-	KT1 13	+	KT3 1	-	KT3 16	+	KT3 31	+

Note = + (increase the pH of the medium); - (decreased the pH of the medium);
 KM (post-coal mining pond water with ≤ 5 years old);
 KT (post-coal mining pond water with ≥ 20 years old)

3.2. The potency of SOB isolates from water of post-coal mining ponds

The 40 isolates were screened based on the potency as SOBs and 9 isolates have higher ability to increase the pH and decreasing sulfur concentration in the medium. Among 9 SOB isolates, three

isolates were KT1.8, KT1.9 and KT1.13 showed highest potency to decrease sulfur concentration in the medium (Figure 2).

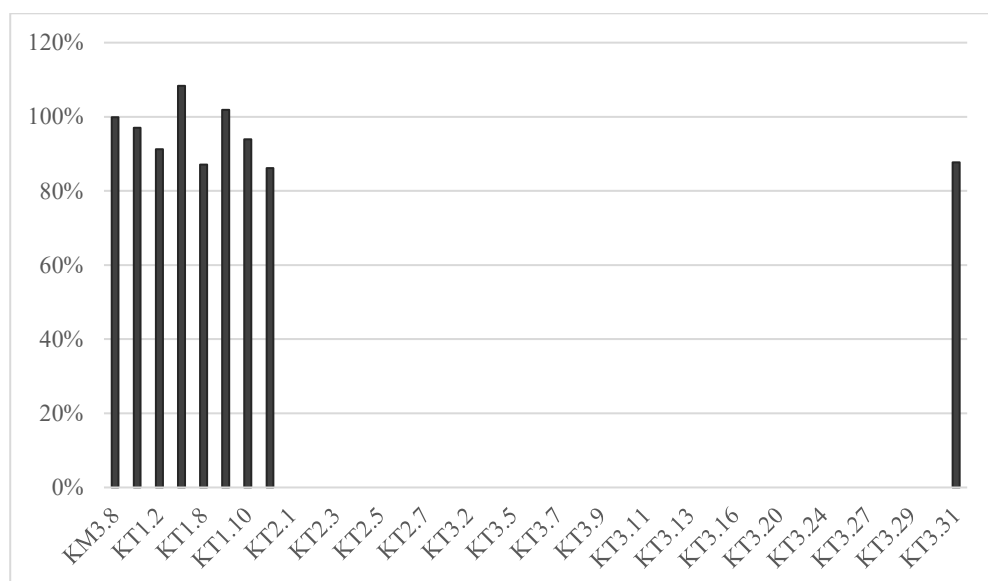


Figure 2. The potency of SOB for decreased sulfur concentration in TSM medium

Those three bacterial isolates were able to change the color of phenol red on thiosulfate agar media by increasing the pH of the medium from initial pH of 6.0 within 7 days of incubation. The ability of sulfur-oxidizing bacteria to increase the pH of the medium was also reported by Mason & Kelly (1988). The SOB isolate of KT1.9, KT1.13, and KT1.8 were able to decrease of sulfur concentration in the medium were 148 %, 101 %, and 6 % respectively (Figure 3). The current results reveal that not all SOBs isolated from water of post-coal mining ponds are able to reduce sulfur concentrations in the media by adding $\text{Na}_2\text{S}_2\text{O}_3$ as a source of sulfur.

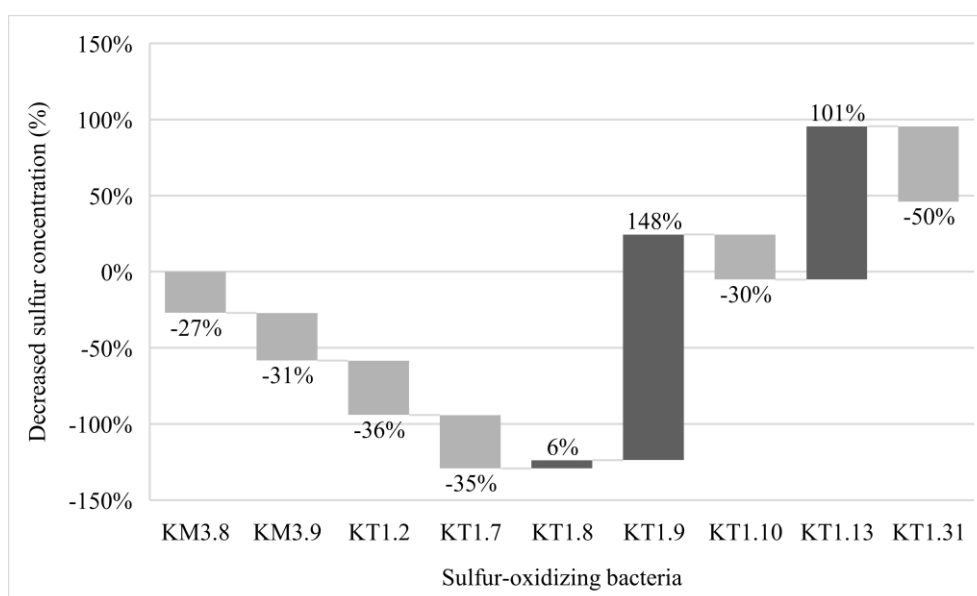


Figure 3. The potency of SOB isolates to decrease of sulfur concentration in the medium

In sulfur-rich environments, sulfur cycling is an important driver of microbial growth and element conversion in many ecosystems. Biological sulfur oxidation is a vital part of the sulfur cycle, and in natural environments the oxidation of sulfur species is mediated by chemolithotrophic and phototrophic bacteria. A variety of sulfur oxidizing bacteria use sulfur as an energy source, and this group encompasses bacteria with little or no taxonomic relationship to each other. Aerobic sulfur-oxidizing bacteria, so-called colorless sulfur-oxidizing bacteria, are mainly mesophilic (Nosalova et al., 2023). Sulfur-oxidizing bacteria from post-coal mining pond water were isolated using enrichment culture technique in the thiosulfate mineral media. In general, the thiosulfate used in this study is usually used to isolate pure cultures of obligate chemolithoautotrophic sulfide-oxidizing bacteria. Thiosulfate is stable at neutral pH, easily soluble and non-toxic at high concentrations (Kantachote et al., 2008). Sulfur-oxidizing bacteria can use sulfur as a basic substrate during the oxidation process and oxidize it to sulphate (Pokorna & Zabranska, 2015). These oxidized sulfur compounds are used as electron donors for anaerobic phototrophic and aerobic chemotrophic growth, and are mostly oxidized to sulphate (Friedrich et al., 2001).

3.3. Species Identity of the Potential SOB isolate

The SOB potential isolates (KT1.8, KT1.9 and KT1.13) were identified based on SEM (scanning electron microscope) and 16S rDNA sequence similarity. The results SEM showed that Figure 4 and

227 the results 16S rDNA sequence similarity that KT1.8 isolate had highest 98.9% similarity with
 228 *Priestia qingshengii* HLS-7, KT1.9 isolate had highest 97.6% similarity with *Sphingobacterium*
 229 *siyangensis* DS48, and KT1.13 isolate had highest 98.3% similarity with *Pseudomonas putida* CFBP
 230 4966 (Figure 5).

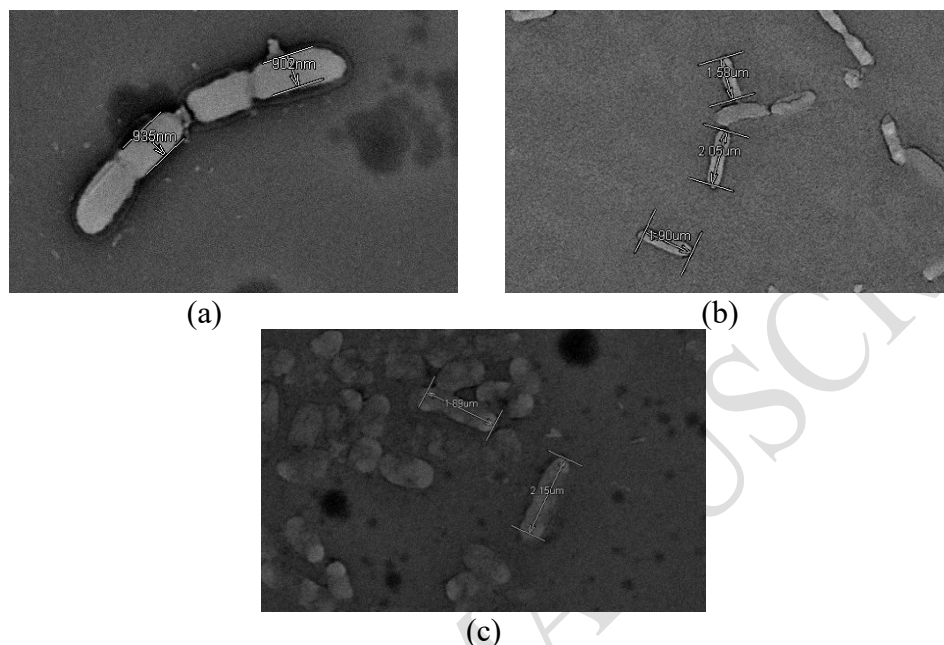
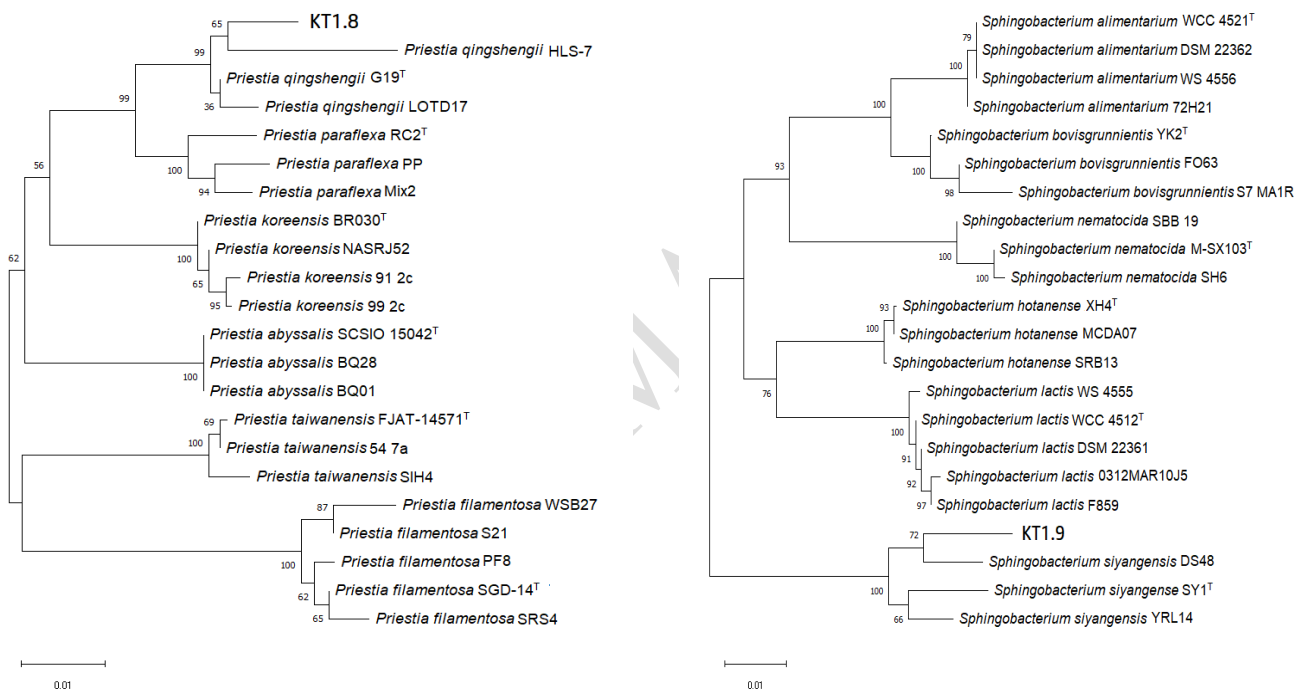


Figure 4. SEM results of potential sulfur-oxidizing bacteria (a) KT1.8, (b) KT1.9 and (c) KT1.13 from post-coal mining pond in Samarinda

236 Sulfur-oxidizing bacteria are one of the main microorganisms that influence the sulfur cycle; they use
 237 this inorganic element to form organic compounds (assimilation, energy-dependent process) and to
 238 produce energy (dissimilar sulfur metabolism). They are essential processes for the global sulfur cycle
 239 (González & Pérez, 2021). Most of the known Sulfur oxidising bacteria (SOB) belongs to the genera
 240 *Thiobacillus*, *Thiothrix*, *Thiomicrospira*, *Achromatium*, and *Desulfuromonas* (Behera et al., 2014).
 241 As shown in Figure 5, sulfur oxidation is not limited only to true sulfur bacteria but also other
 242 heterotrophic bacteria isolated from soil and marine environment carry the same process. The
 243 heterotrophic bacteria belong to genera *Pseudomonas* involve in sulfur oxidation with 98% sequence
 244 similarity with *Pseudomonas putida* NR113651 (Sajjad et al., 2016). Sulfur oxidizing *Pseudomonas*
 245 spp. have also been isolated from soil of Bhitarkanika, Odisha, India (Thatoi et al., 2012). Sulfur
 246 oxidising activity of *Pseudomonas* spp. and *Bacillus* spp. (*Priestia* spp.) were also well reported
 247 (Behera et al., 2014). This study was conducted to isolate Sulfur oxidising bacteria from mangrove

soil of Mahanadi river delta, Odisha, India and evaluate their Sulfur oxidation ability. Figure 5 also shows other heterotrophic microorganisms not commonly associated with sulfur oxidation and thus termed non-SOB, e.g., *Sphingobacterium* sp. was detected in this study as well. The identification of heterotrophic non-SOB in the enrichment cultures was probably due to their presence in the original biofilm. A contaminated with organic residues from the biofilm sample may have enabled the growth of heterotrophic non-SOB in the culture media. Furthermore, many obligate chemolithotrophic sulfur oxidizers produce organic substances that could be subsequently utilized by heterotrophs leading to the growth of non-SOB species (Huber et al., 2016).



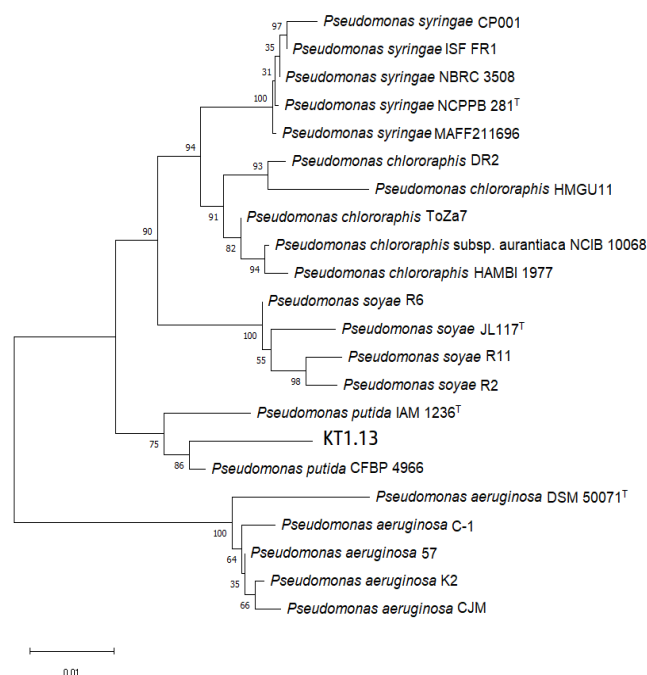


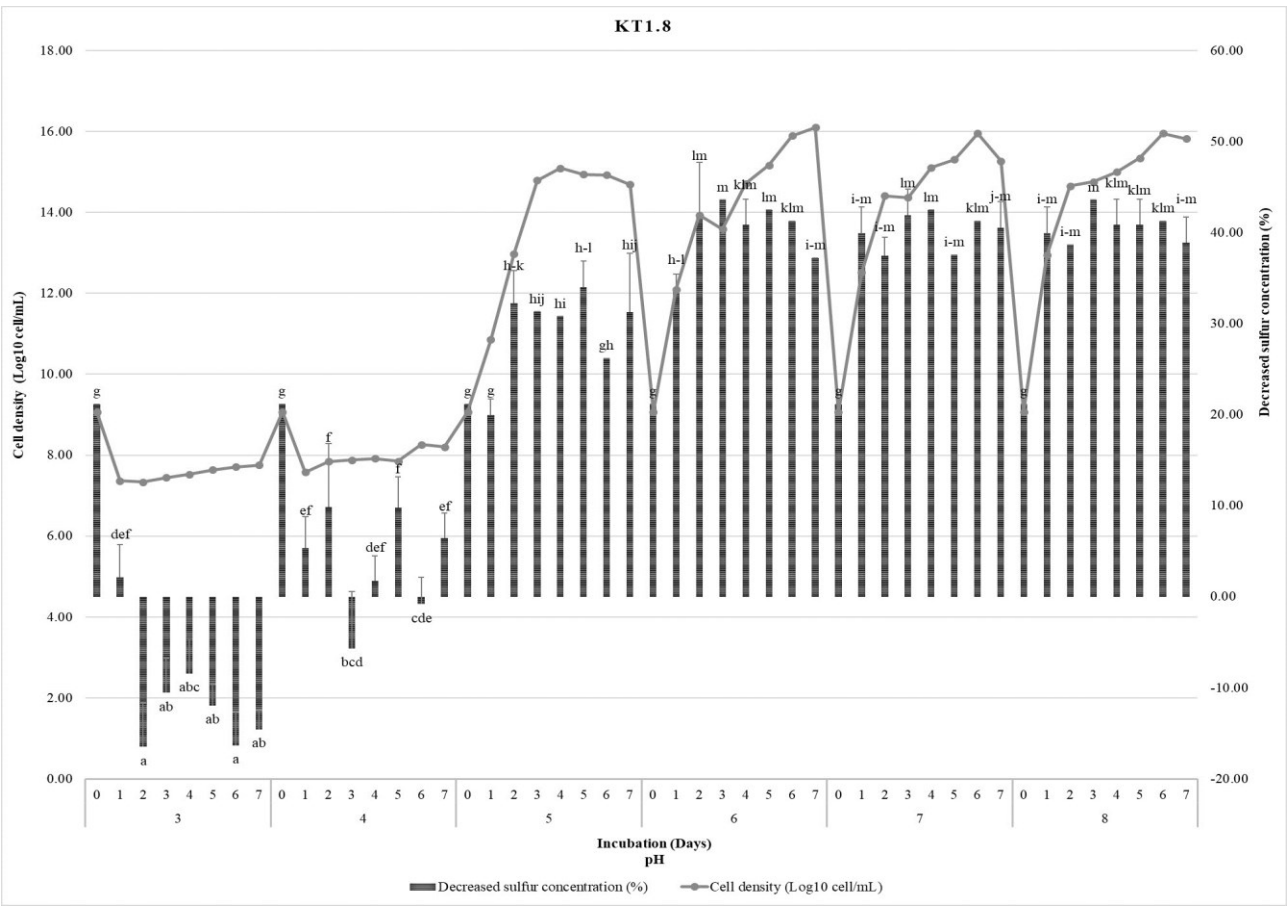
Figure 5. Phylogeny tree of potential sulfur-oxidizing bacteria and reference strains base on 16S rDNA sequence similarity according Neighbor joining algorithm

3.4. The optimum of culture medium for potential SOB growth

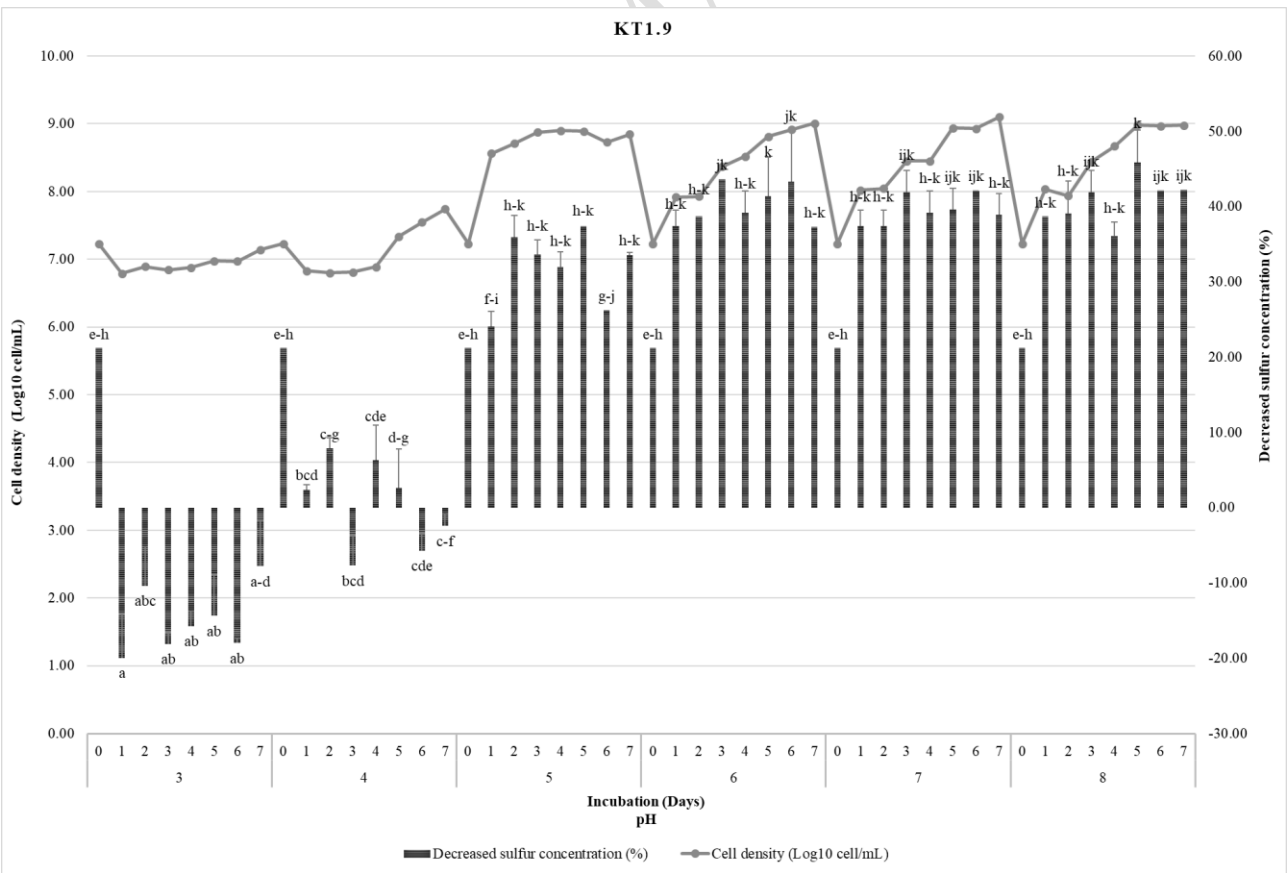
3.4.1. The potency of potential SOB isolates in the various of pH medium

Hydrogen ion concentration is the most important factor influencing enzyme activity to reduce sulfur concentration in the bacterial media. To determine the effect of pH on SOB growth rate and sulfur oxidation activity, TSM media was prepared at six different pHs (3, 4, 5, 6, 7, and 8). As shown in Figure 6, The three potential SOB isolates grew better at pH 6 with optimal growth of KT1.8 = 124×10^{14} cell/mL; KT1.9 = 101×10^7 cell/mL; and KT1.13 = 111×10^7 cell/mL; accompanied by a decrease in sulfur concentration of KT1.8 = 43.57%; KT1.9 = 45.85% and KT1.13 = 43.24% in the culture medium. On the other hand, at high acidic pH, enzyme induction and reduction of sulfur concentrations are very low. However, the isolate KT1.13 showed growth activity at pH 4 media (Figure 6).

272
273



274



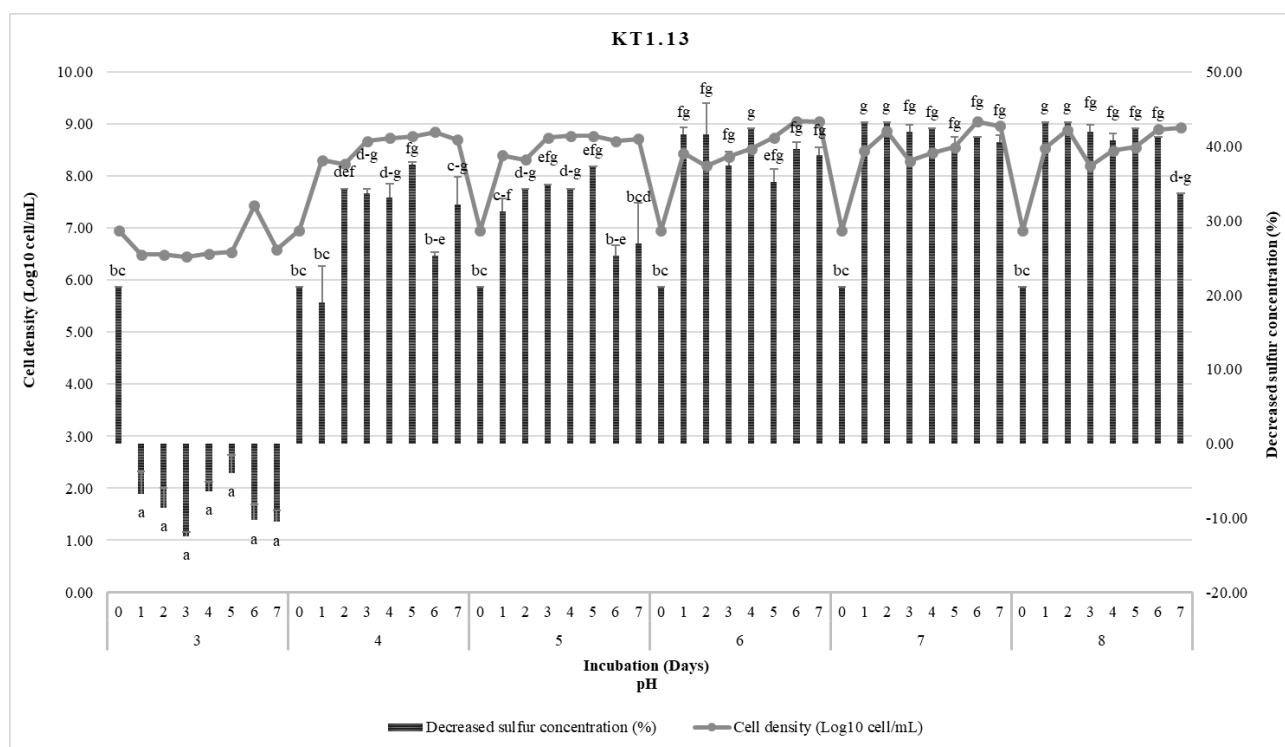


Figure 6. Growth activity of three SOB isolates in the various pH of TSM medium

Most microorganism better growth at a certain pH range, where changes in pH culture medium can affect their growth and activity. Thus, it is important to investigate the optimal pH range of microorganisms. In this study, microbial growth and sulfur oxidation activity of all potential SOB isolates were observed to occur under neutral and slightly alkaline conditions with a pH range of 6-8. Generally, the optimum pH for SOB varies depending on the microbial habitat and species. These results reinforce the fact that the post-coal mining ponds that are the habitat for isolated bacteria have a pH value ranging from 6.0 to 8.0. Thus, the preference for the pH of the isolates in this study is not surprising because the enrichment conditions used were pH 6 and the pH of the isolation environment. In addition, some representatives of *Thiobacillus* sp. has shown neutrophilic characters such as *Thiobacillus novellus* and *Thiobacillus thioparus* with optimum growth at pH 7.0 and 7.5 respectively (Pokorna & Zabranska, 2015). The quantitative survey indicated that soxB was more abundant than sqr and dsrA in the Pearl River water, which suggested that Sox was probably the key enzyme that catalyzed sulfur oxidation in this environment. The Sox enzyme complex not only converts thiosulfate to sulfate without the formation of any free intermediate, but also oxidizes sulfide and sulfur by feeding HS⁻ and S⁰ into the Sox pathway as appropriate intermediates via enzymatic or

294 non-enzymatic conjugation to a carrier protein SoxY (Ghosh & Dam, 2009). The Sox system
295 commonly controls sulfur oxidation in aerobic chemotrophic and anaerobic phototrophic
296 Alphaproteobacteria and a shortened *sox* gene cluster was identified in the genomes of other
297 chemotrophic or phototrophic bacteria (including colorless sulfur bacteria, green sulfur bacteria,
298 purple sulfur bacteria, purple non-sulfur bacteria); this has given rise to the hypothesis about
299 emergence of a common mechanism in SOB (Friedrich et al. 2001, Ghosh & Dam, 2009). From the
300 above analysis, Luo et al. (2018) infer that the sulfur oxidation in the Pearl River water was mainly
301 catalyzed by the Sox enzyme system.

302 3.4.2. *The potency of potential SOB isolates in the various of medium temperatures*

303 The rate of bacterial growth and metabolism depends on the composition of the media and the
304 prevailing environmental conditions. Various bacterial strains differ in nutritional requirements and
305 culture conditions for optimal growth. The effect of temperature on the growth rate and sulfur
306 oxidation activity of isolates KT1.8, KT1.9 and KT1.13 were shown at Figure 7. The results showed
307 that the three potential SOB isolates were growth optimally at 30° C. The KT1.8 isolate with cell
308 density is 146×10^{14} cell/mL; able decrease sulfur concentration is 43.57%, KT1.9 cell density is
309 81×10^7 cell/mL; decrease sulfur concentration is 43.57%, and KT1.13 cell density is 33×10^7 cell/mL;
310 decrease sulfur concentration is 42.48%; they had highest potency to decrease sulfur concentration
311 ($P < 0.05$) in media thiosulfate. The growth of the three bacterial isolates and their sulfur oxidation
312 activity were different from among temperature tested. Bacterial growth and the highest decrease in
313 sulfur concentration occurred at 30° C (Figure 7) and it was classified as mesophilic SOB.

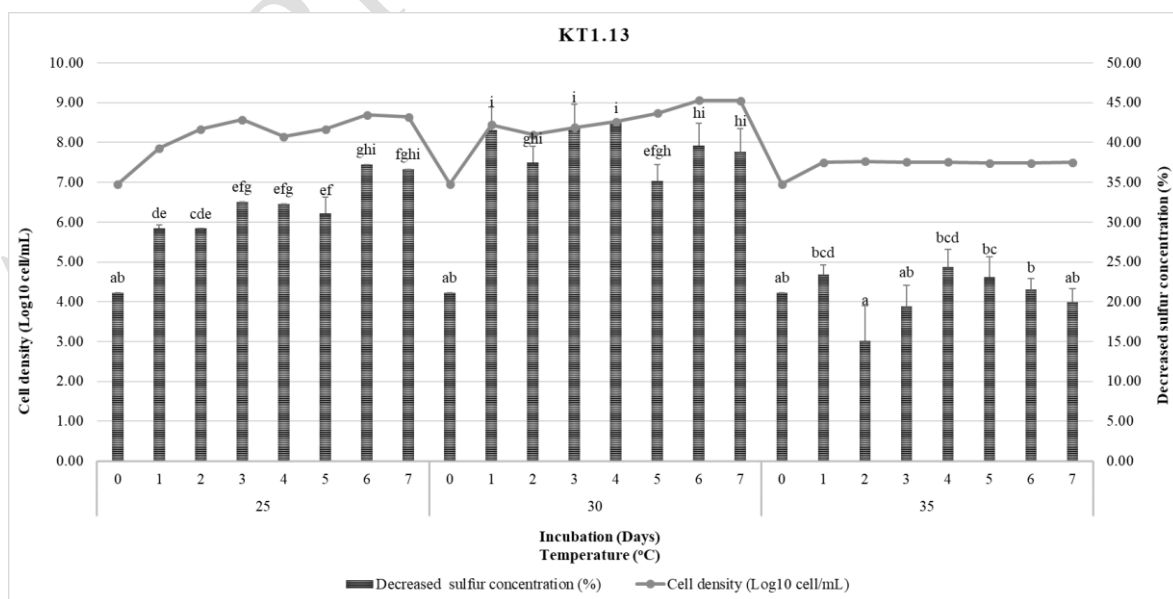
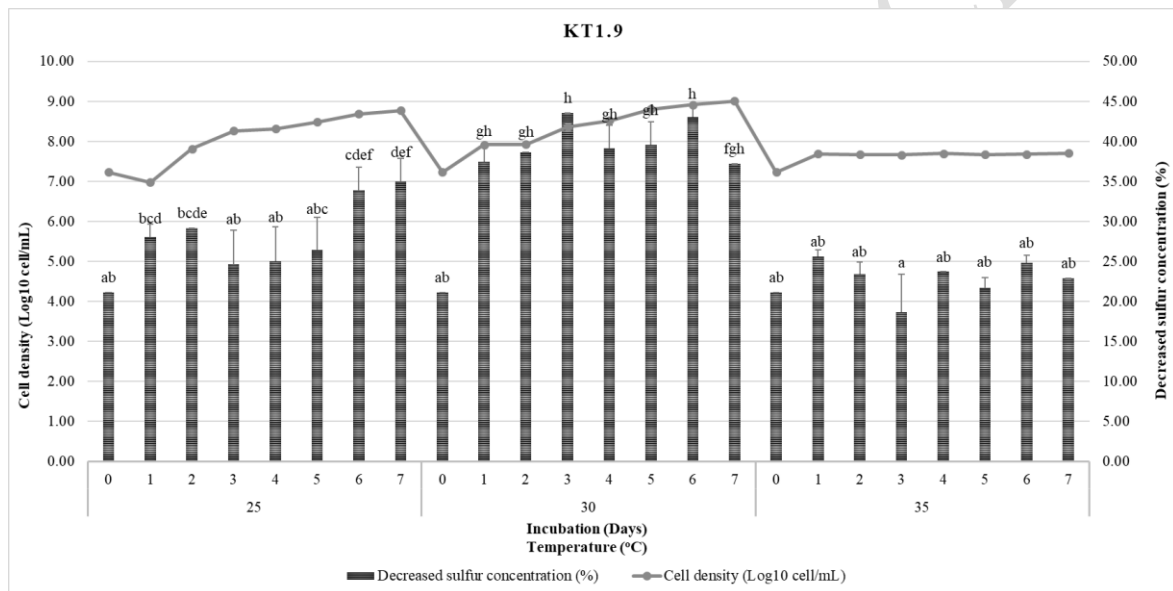
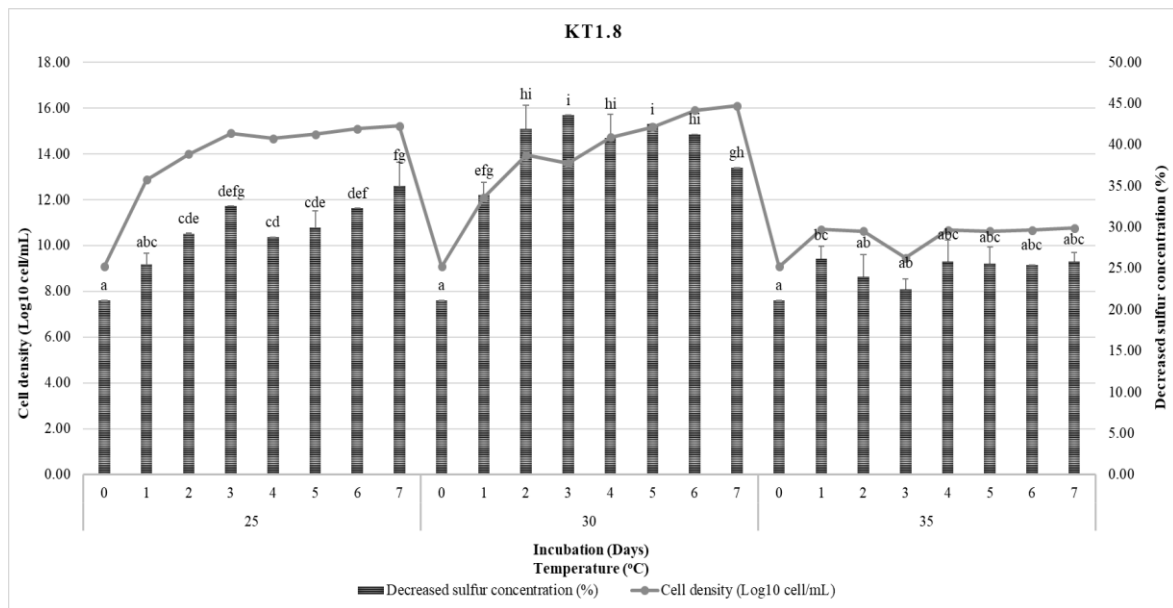


Figure 7. Growth activity of three SOB isolates in the various temperature of TSM medium

321 3.4.3. The potency of potential SOB isolates in the various of thiosulfate concentrations
322 Thiosulfate concentration plays an important role in the activity of sulfur-oxidizing bacteria. This
323 may be due to thiosulfate is a stimulator of the enzyme sulfide oxidase. The thiosulfate concentrations
324 that tested in the TSM media were 5 mM, 10 mM, 20 mM, and 40 mM. As shown in Figure 8, KT1.8
325 isolate (cell density is 98×10^{12} cell/mL; decrease sulfur concentration is 46.52%), KT1.9 (cell density
326 is 25×10^7 cell/mL; decrease sulfur concentration is 40.40%) and KT1.13 (cell density is 85×10^6
327 cell/mL; decrease sulfur concentration is 43.71%), they had highest potency to decrease sulfur
328 concentration ($P < 0.05$) in media containing 10 mM and 20 mM thiosulfate on the sixth days of
329 incubation. However, no significant differences in terms of cell growth were observed for all the
330 isolates tested. The research showed that all potential isolates were able to grow at thiosulfate
331 concentrations up to 40 mM where the microbial growth of isolates was affected by the amount of
332 thiosulfate concentration added to the growth medium. This result can be explained by the availability
333 of sufficient substrate (thiosulfate) to supply energy for the bacteria for significant growth.
334
335
336
337

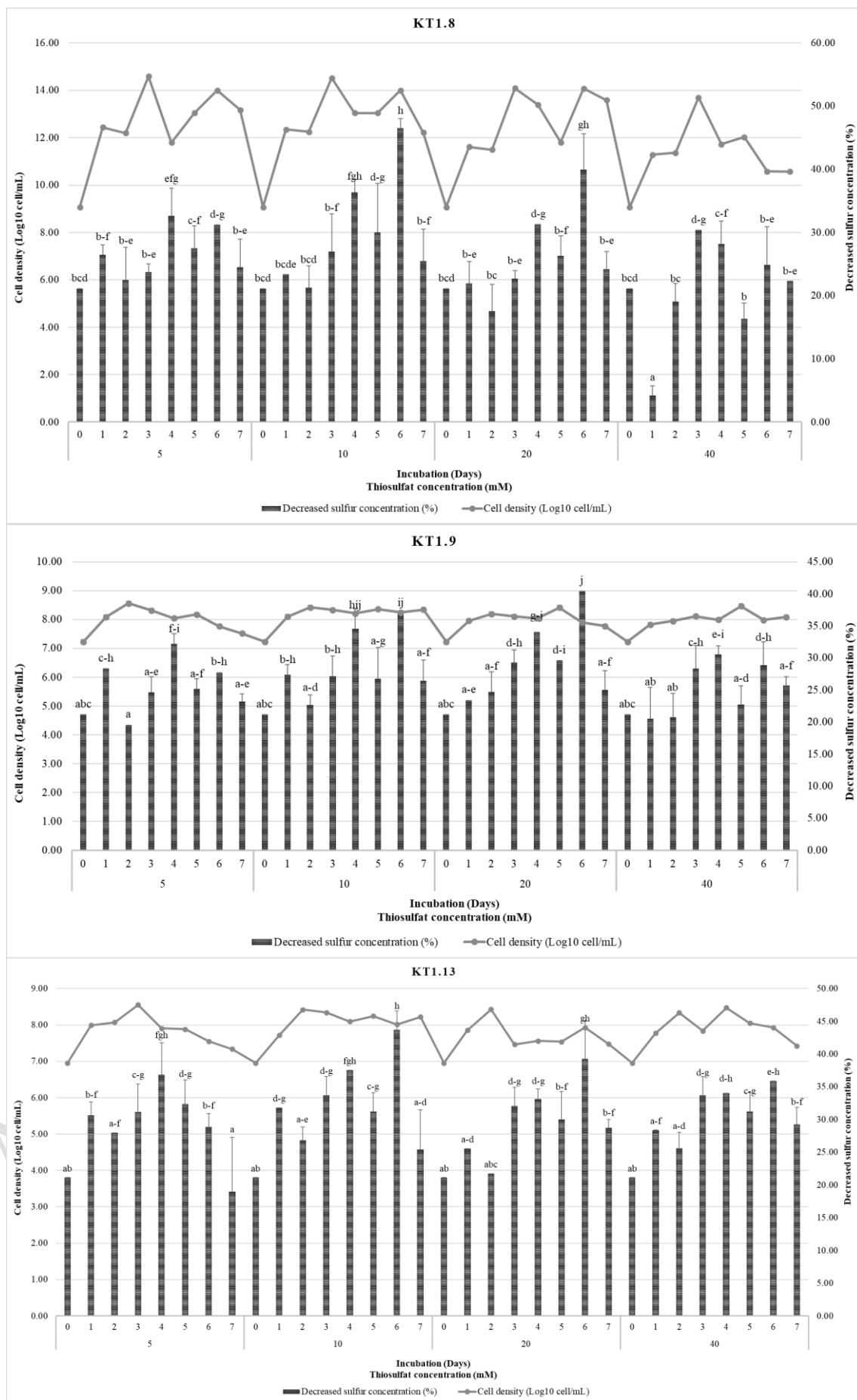


Figure 8. Growth activity three isolates in the various thiosulfate concentration in TSM medium

343 All isolates that were optimized in culture media showed the ability to oxidize inorganic sulfur
344 compounds which were added as a source of energy for growth. In chemotrophic and phototropic
345 sulfur oxidizers that do not form sulfur precipitates, a periplasmic thiosulfate oxidizing multienzyme
346 complex (Sox complex) has been described as responsible for sulfate formation from thiosulfate.
347 Thiosulfate is thought to fulfill a key role in the biogeochemical sulfur cycle as it is the energy source
348 of most sulfur-oxidizing bacteria. In addition to the sulfur dissimilation pathways of representatives
349 of the Archaea domain, there are currently at least three well-described pathways postulated for use
350 by representatives of the Bacteria domain. These include the complete oxidation of reduced sulfur
351 compounds to sulfate end products, known as the Sox metabolic pathway, the tetrathionate (S₄I)
352 pathway involving polythionate intermediates typical for acidophilic bacteria, and the branched
353 thiosulfate oxidation pathway (Konrad et al., 2023; Nosalova et al., 2023). Green sulfur bacteria use
354 various reduced sulfur compounds such as sulfide, elemental sulfur, and thiosulfate as electron donors
355 for photoautotrophic growth. This article briefly summarizes what is known about the inorganic sulfur
356 oxidizing systems of these bacteria with emphasis on the biochemical aspects. Enzymes that oxidize
357 sulfide in green sulfur bacteria are membrane-bound sulfide-quinone oxidoreductase, periplasmic
358 (sometimes membrane-bound) flavocytochrome c sulfide dehydrogenase, and monomeric
359 flavocytochrome c (SoxF). Some green sulfur bacteria oxidize thiosulfate by the multienzyme system
360 called either the TOMES (thiosulfate oxidizing multi-enzyme system) or Sox (sulfur oxidizing
361 system) composed of the three periplasmic proteins: SoxB, SoxYZ, and SoxAXK with a soluble small
362 molecule cytochrome c as the electron acceptor. The oxidation of sulfide and thiosulfate by these
363 enzymes in vitro is assumed to yield two electrons and result in the transfer of a sulfur atom to
364 persulfides, which are subsequently transformed to elemental sulfur. The elemental sulfur is
365 temporarily stored in the form of globules attached to the extracellular surface of the outer
366 membranes. The oxidation pathway of elemental sulfur to sulfate is currently unclear, although the
367 participation of several proteins including those of the dissimilatory sulfite reductase system etc. is
368 suggested from comparative genomic analyses.

369 4. Conclusion

370 From the results of the research, it can be concluded that three of SOB isolates KT1.8 had 98.9%
371 similarity with *Priestia qingshengii* HLS-7, KT1.9 had 97.6% similarity with *Sphingobacterium*
372 *siyangensis* DS48, and KT1.13 had 98.3% similarity with *Pseudomonas putida* CFBP 4966 were
373 potential to reduce sulfur concentrations in the culture medium. Those SOB isolates had optimum
374 growth and oxidizing of sulfur at pH 6, 30° C temperature, and 10 mM and 20 mM concentration in
375 sixth days incubation of the culture thiosulphate mineral media. The SOB potential isolates in this
376 study can be developed as bioremediation agent in the reclamation of post-coal mining ponds water
377 which polluted by sulfur.

378 5. Acknowledgments

379 Acknowledgments are expressed to the Center for The Higher Education Funding (BPPT) and The
380 Education Fund Management Agency (LPDP) through The Indonesia Education Scholarship (BPI)
381 by the Ministry of Education, Culture, Research and Technology (Kemendikbudristek) ID Awardee
382 202101121674, colleagues at the Faculty of Mathematics and Natural Sciences, Brawijaya University
383 and the Faculty of Mathematics and Natural Sciences, University of Mulawarman, Dr. Eka Pratiwi
384 Tenriawaru, M.Pd who has assisted in the research process, and all parties who have assisted in this
385 research.

386 References

- 387 Absori, A., Yulianingrum, A. V., Dimyati, K., Harun, H., Budiono, A., & Disemadi, H. S. (2021).
388 Environmental Health-Based Post-Coal Mine Policy in East Borneo. *Macedonian Journal of*
389 *Medical Sciences*, 9, 740–744.
- 390 Alang, H., Kusnadi, J., Ardiyati, T., & Suharjono. (2019). Identification of lactic acid bacteria as
391 antimicrobial from milk Toraja Belang buffalo. *IOP Conference Series: Earth and*
392 *Environmental Science*, 230, 1–6. <https://doi.org/10.1088/1755-1315/230/1/012092>
- 393 Ardiansyah, M., & Fajri, M. (2016). Analisis Tanah pada Lahan Reklamasi Pascatambang Batubara

- 394 di PT NBC, Berau, Kalimantan Timur. *Prosiding Ekspose Hasil- Hasil Penelitian Balai Besar*
 395 *Litbang Ekosistem Hutan Dipterokarpa, November*, 127–134.
- 396 Behera, B. C., Parida, S., Dutta, S. K., & Thatoi, H. N. (2014). Isolation and Identification of Cellulose
 397 Degrading Bacteria from Mangrove Soil of Mahanadi River Delta and Their Cellulase
 398 Production Ability. *American Journal of Microbiological Research*, 2(1), 41–46.
 399 <https://doi.org/10.12691/ajmr-2-1-6>
- 400 Cha, J. M., Suk Cha, W., & Lee, J. H. (1999). Removal of organo-Sulfur odour compounds by
 401 *Thiobacillus novellus* SRM, Sulfur-oxidizing microorganisms. *Process Biochemistry*, 34(6–7),
 402 659–665. [https://doi.org/10.1016/S0032-9592\(98\)00139-3](https://doi.org/10.1016/S0032-9592(98)00139-3)
- 403 Chen, C., Cheng, M., & Hsu, C. (2023). *Sulfur-Containing Amino Acids , Hydrogen Sulfide , and*
 404 *Sulfur Compounds on Kidney Health and Disease.*
- 405 Dutta, M., Khare, P., Chakravarty, S., & Saikia, D. (2018). Physico-chemical and Elemental
 406 Investigation of Aqueous Leaching of High Sulfur Coal and Mine Overburden from Ledo
 407 Coalfield of Northeast India. *International Journal of Coal Science & Technology*, 5, 265–281.
 408 <https://doi.org/10.1007/s40789-018-0210-9>
- 409 Friedrich, C. G., Rother, D., Bardischewsky, F., Ouentmeier, A., & Fischer, J. (2001). Oxidation of
 410 Reduced Inorganic Sulfur Compounds by Bacteria: Emergence of a Common Mechanism?
 411 *Applied and Environmental Microbiology*, 67(7), 2873–2882.
- 412 Ghosh, W., & Dam, B. (2009). Biochemistry and molecular biology of lithotrophic sulfur oxidation
 413 by taxonomically and ecologically diverse bacteria and archaea. *FEMS Microbiology Reviews*,
 414 33(6), 999–1043.
- 415 González, A. G., & Pérez, R. (2021). *Importance of extremophilic microorganisms in biogeochemical*
 416 *cycles. C.*
- 417 Hassanshahian, M., & Ghoebani, S. (2018). Isolation and Characterization of Iron and Sulfur-

- 418 Oxidizing Bacteria from Maiduk Copper Mine at Shahrabak Province in Iran. *Geomicrobiology*
 419 *Journal*, 35(4), 261–265. <https://doi.org/10.1080/01490451.2017.1348408>
- 420 Hidayat, M. Y., Saud, H. M., & Samsudin, A. A. (2017). Isolation and Characterisation of Sulfur
 421 Oxidizing Bacteria Isolated from Hot Spring in Malaysia for Biological Deodorisation of
 422 Hydrogen Sulphide in Chicken Manure. *Journal Media Peternakan*, 40, 178–187.
- 423 Hindersah, R., Handyman, Z., Indriani, F. N., Suryatmana, P., & Nurlaeny, N. (2018). Structural
 424 Modelling of Riparian Tree Diversity and Ecosystem Degradation Roles in Determining the
 425 Water Quality of Springs and Its Drains in East Java. *Journal Degraded and Mining Land*
 426 *Management*, 5, 2502–2458. <https://doi.org/10.15243/jdmlm>
- 427 Huber, B., Herzog, B., Drewes, J. E., Koch, K., & Müller, E. (2016). Characterization of sulfur
 428 oxidizing bacteria related to biogenic sulfuric acid corrosion in sludge digesters. *BMC*
 429 *Microbiology*, 16(1), 1–11. <https://doi.org/10.1186/s12866-016-0767-7>
- 430 Jiang, C., Liu, Y., Liu, Y., Guo, X., & Liu, S. J. (2009). Isolation and characterization of ferrous- and
 431 sulfur-oxidizing bacteria from Tengchong solfataric region, China. *Journal of Environmental*
 432 *Sciences*, 21(9), 1247–1252. [https://doi.org/10.1016/S1001-0742\(08\)62411-0](https://doi.org/10.1016/S1001-0742(08)62411-0)
- 433 Kantachote, D., Charernjiratrakul, W., Noparatnaraporn, N., & Oda, K. (2008). Selection of sulfur
 434 oxidizing bacterium for sulfide removal in sulfate rich wastewater to enhance biogas production.
 435 *Electronic Journal of Biotechnology*, 11(2). <https://doi.org/10.2225/vol11-issue2-fulltext-13>
- 436 Khotimah, S., Suharjono, Ardyati, T., & Nurani, Y. (2020). Isolation and identification of cellulolytic
 437 bacteria at fibric, hemic and sapric peat in Teluk Bakung Peatland, Kubu Raya district,
 438 Indonesia. *Biodiversitas*, 21(5), 2103–2112. <https://doi.org/10.13057/biodiv/d210538>
- 439 Kolmert, Å., Wikström, P., & Hallberg, K. B. (2000). A fast and simple turbidimetric method for the
 440 determination of sulfate in sulfate-reducing bacterial cultures. *Journal of Microbiological*
 441 *Methods*, 41(3), 179–184. [https://doi.org/10.1016/S0167-7012\(00\)00154-8](https://doi.org/10.1016/S0167-7012(00)00154-8)

- 442 Konrad, R., Vergara-barros, P., Alcorta, J., Alcam, E., Levic, G., Ridley, C., & Beatriz, D. (2023).
 443 *Distribution and Activity of Sulfur-Metabolizing Bacteria along the Temperature Gradient in*
 444 *Phototrophic Mats of the Chilean Hot Spring Porcelana*. 1–19.
- 445 Koščová, M., Hellmer, M., Anyona, S., & Gvozdkova, T. (2018). Geo-Environmental Problems of
 446 Open Mining : Classification and Solutions. *E3S Web Conference IIIrd International Innovative*
 447 *Mining Symposium, 41*, 1–7. <https://doi.org/https://doi.org/10.1051/e3sconf/20184101034>
- 448 Kumar, U., Panneerselvam, P., Vadakattu, G., Manjunath, M., Priyadarshinee, P., Sahoo, A., Dash,
 449 S. R., Kaviraj, M., & Annapurna, K. (2018). Diversity of Sulfur-Oxidizing and Sulfur-Reducing
 450 Microbes in Diverse Ecosystems. *Journal Springer Nature Singapore, 3*, 65–89.
 451 <https://doi.org/10.1007/978-981-10-6178-3>
- 452 Luo, J., Tan, X., Liu, K., & Lin, W. (2018). Survey of sulfur-oxidizing bacterial community in the
 453 Pearl River water using soxB, sqr and dsrA as molecular biomarkers.pdf. *Springer, 8*, 1–12.
 454 <https://doi.org/https://doi.org/10.1007/s13205-017-1077-y>
- 455 Malviya, D., Varma, A., Singh, U. B., Singh, S., & Singh, H. V. (2022). *Sulfur-Oxidizing Bacteria*
 456 *From Coal Mine Enhance Sulfur Nutrition in Pigeonpea (Cajanus cajan L .)*. 10(July), 1–24.
 457 <https://doi.org/10.3389/fenvs.2022.932402>
- 458 Mason, J., & Kelly, D. P. (1988). Thiosulfate oxidation by obligately heterotrophic bacteria.
 459 *Microbial Ecology, 15*(2), 123–134. <https://doi.org/10.1007/BF02011707>
- 460 Méndez-García, C., Peláez, A. I., Mesa, V., Sánchez, J., Golyshina, O. V., & Ferrer, M. (2015).
 461 Microbial diversity and metabolic networks in acid mine drainage habitats. *Frontiers in*
 462 *Microbiology, 6*, 1–17. <https://doi.org/10.3389/fmicb.2015.00475>
- 463 Mustafa, I., Ohta, H., Niidome, T., & Morimura, S. (2015). Isolation of Heterotrophic Thiosulfate-
 464 Oxidizing Bacteria and Their Role in a Conserved Tidal Flat in The Ariake Sea, Japan. *Journal*
 465 *of Ecology and The Natural Environment, 7*, 106–112. <https://doi.org/10.5897/jene2015.0504>

- 466 Nadella, R., Vaiyapuri, M., Kusunur, A., Joseph, T., Velayudhan, L., & And Mothadaka, M. (2019).
 467 Isolation and characterization of Sulfur oxidizing bacteria (*Halothiobacillus* sp.) from
 468 aquaculture farm soil. *Journal of Environmental Biology*, 40, 363–369.
- 469 Nosalova, L., Piknova, M., & Kolesarova, M. (2023). Cold Sulfur Springs — Neglected Niche for
 470 Autotrophic Sulfur-Oxidizing Bacteria. *Microorganisms MDPI*, 11(1436), 1–14.
- 471 Pokorna, D., & Zabranska, J. (2015). Sulfur Oxidizing Bacteria in Environmental Technology.
 472 *Journal Biotechnology Advances*, 33, 1246–1259.
 473 <https://doi.org/10.1016/j.biotechadv.2015.02.007>
- 474 Prasetyono, E. (2015). Evaluasi Kegiatan Akuakultur di Kolong Pascatambang: Analisis
 475 Pencemaran Air Kolong. *Jurnal OmniAkuatika*, 11, 6–14.
- 476 Reddy, A. N., Gopal, A. V., Lakshmipathy, R., & Padma, V. (2018). Isolation , Characterization and
 477 Screening of Sulfur Oxidizing Bacteria from Rhizosphere Soils of Groundnut. *International*
 478 *Journal of Current Microbiology and Applied Sciences*, 7, 2639–2644.
 479 <https://doi.org/https://doi.org/10.20546/ijemas.2018.708.272>
- 480 Rohmah, N. S., Suharjono, Jatmiko, Y. D., Siswanto, D., & Mustafa, I. (2020). The Potency of
 481 Endophytic Bacteria Isolated from *Ficus septica* as Phytoremediation Promoting Agent of Cr
 482 (VI) Contaminated Soil. *Journal Biodiversitas*, 21, 1920–1927.
 483 <https://doi.org/10.13057/biodiv/d210519>
- 484 Sajjad, W., Bhatti, T. M., Hasan, F., Khan, S., Badshah, M., Naseem, A. A., & Shah, A. A. (2016).
 485 Characterization of sulfur-oxidizing bacteria isolated from acid mine drainage and black shale
 486 samples. *Pakistan Journal of Botany*, 48, 1253–1262.
- 487 Thatoi, H., Chandra Behera, B., Kanti Dangar, T., & Ranjan Mishra, R. (2012). Microbial
 488 Biodiversity in Mangrove soils of Bhitarkanika, Odisha, India. *International Journal of*
 489 *Environmental Biology*, 2(May 2018), 50–58. <https://doi.org/10.13140/RG.2.2.29232.25605>

- 490 Tuheteru, E. J., Kusuma, G. J., Pranoto, K., Palingi, Y., & Gautama, R. S. (2021). Studi Kualitas Air
491 dan Potensi Pemanfaatan Danau Bekas Tambang JVoid PT Kaltim Prima Coal , Kalimantan
492 Timur Study of Water Quality and The Potential Beneficial of Pit Lake JVoid at. *Indonesian*
493 *Mining and Energy Journal*, 4, 52–59.
- 494 Yousef, N., Mawad, A., Aldaby, E., & Hassanein, M. (2019). Isolation of Sulfur Oxidizing Bacteria
495 from Polluted Water and Screening for Their Efficiency of Sulfide Oxidase Production. *Global*
496 *Nest Journal*, 21, 259–264. <https://doi.org/10.30955/gnj.002756>
- 497 Zhang, J., Li, M., Taheri, A., Zhang, W., Wu, Z., & Song, W. (2019). Properties and Application of
498 Backfill Materials in Coal Mines in China. *Journal Minerals*, 9, 1–21.
499 <https://doi.org/10.3390/min9010053>
- 500 Zhang, Y., Wang, X., Zhen, Y., Mi, T., He, H., & Yu, Z. (2017). Microbial Diversity and Community
501 Structure of Sulfate-Reducing and Sulfur-Oxidizing Bacteria in Sediment Cores from The East
502 China Sea. *Journal Frontiers in Microbiology*, 8, 1–17.
503 <https://doi.org/10.3389/fmicb.2017.02133>